



NATIONAL ENDOWMENT FOR THE
Humanities

October to December 2018
DIVISION OF PUBLIC PROGRAMS

EVENTS, EXHIBITIONS, AND PROGRAMS

EXHIBITION OPENINGS

OCTOBER

October 5 to November 20

DREITZER GALLERY, BRANDEIS
UNIVERSITY, Waltham, MA

**Leonard Bernstein:
The Power of Music**

Traveling. Organized by the National
Museum of American Jewish History.
www.nmajh.org

October 6 to January 7, 2019

CRYSTAL BRIDGES MUSEUM OF
AMERICAN ART, Bentonville, AR

**Art for a New Understanding:
Native Voices, 1950s to Now**

Traveling. crystalbridges.org

October 20 to January 6, 2019

WADSWORTH ATHENEUM
MUSEUM OF ART, Hartford, CT

**Monsters & Myths: Surrealism
and War in the 1930s and 1940s**

Traveling. Organized by the Baltimore
Museum of Art. thewadsworth.org

October 21 to February 10, 2019

FOWLER MUSEUM OF CULTURAL
HISTORY, UNIVERSITY OF
CALIFORNIA, Los Angeles, CA

**World on the Horizon: Swahili
Arts Across the Indian Ocean**

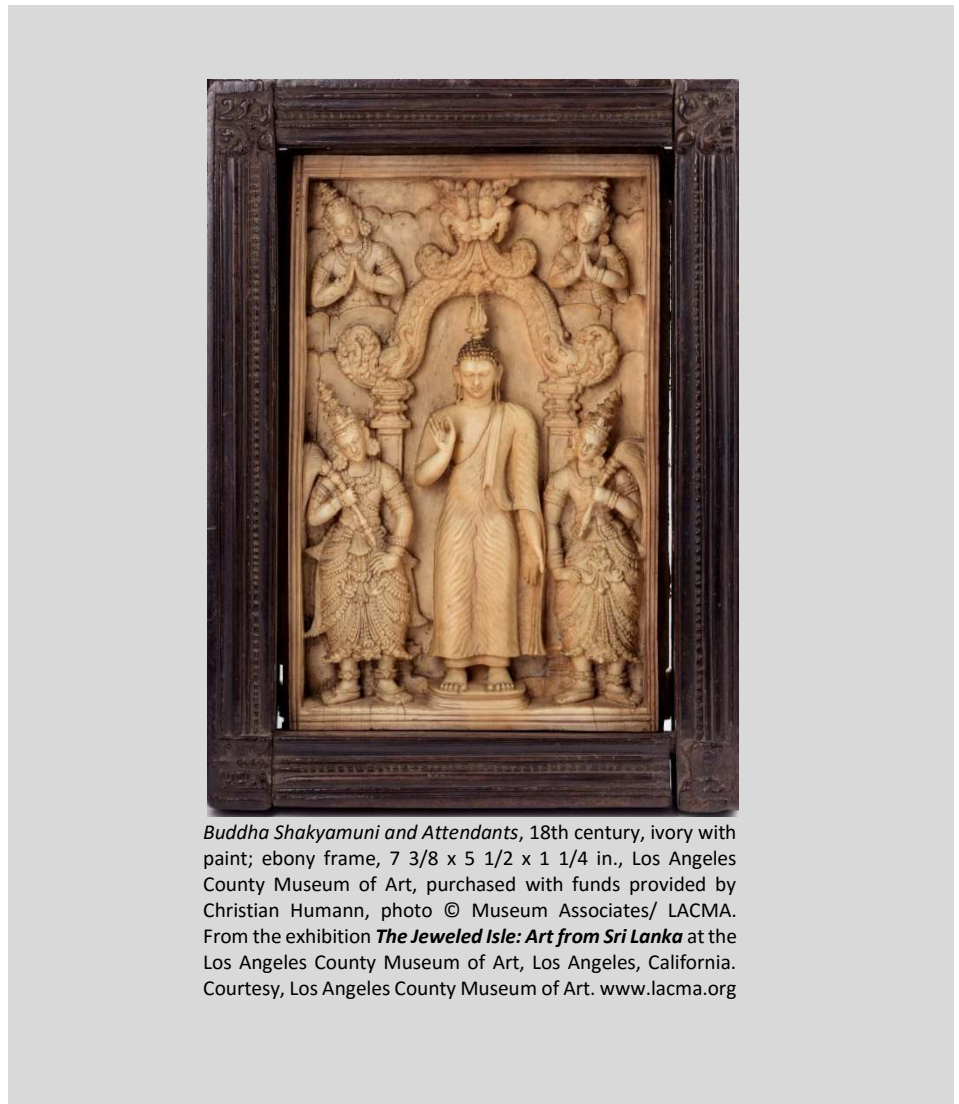
Traveling. Organized by the University
of Illinois, Urbana-Champaign.
www.fowler.ucla.edu

October 27 to December 2

CHICAGO HISTORY MUSEUM,
Chicago, IL

**Modern by Design:
Chicago Streamlines America**

Temporary. Organized by the Chicago
Historical Society. www.chicagohistory.org



Buddha Shakyamuni and Attendants, 18th century, ivory with paint; ebony frame, 7 3/8 x 5 1/2 x 1 1/4 in., Los Angeles County Museum of Art, purchased with funds provided by Christian Humann, photo © Museum Associates/ LACMA. From the exhibition *The Jeweled Isle: Art from Sri Lanka* at the Los Angeles County Museum of Art, Los Angeles, California. Courtesy, Los Angeles County Museum of Art. www.lacma.org

NOVEMBER

November 10 to February 24, 2019

SAN FRANCISCO MUSEUM OF
MODERN ART, San Francisco, CA

**Art and China after 1989:
Theater of the World**

Traveling. Organized by the
Solomon R. Guggenheim Foundation.
www.guggenheim.org

DECEMBER

December 9 to June 23, 2019

LOS ANGELES COUNTY MUSEUM
OF ART, Los Angeles, CA

**The Jeweled Isle: Art from
Sri Lanka**

Temporary. www.lacma.org

NEH ON THE ROAD

NEH on the Road is an initiative of the Division of Public Programs—in cooperation with Mid-America Arts Alliance—to extend the reach of NEH-funded, large-scale exhibitions. Smaller versions of these exhibitions, supported by specially designed education guides and program materials, travel to institutions in underserved areas of the country. Please contact the Mid-America Arts Alliance if you would like to host any of these exhibitions. Additional NEH on the Road exhibits are listed under the Ongoing Exhibitions Section. www.nehontheroad.org.

November 10 to January 7, 2019

MONDAK HERITAGE CENTER,
Sidney, MT

Bandits & Heroes, Poets & Saints: Popular Art of the Northeast of Brazil

Traveling. Based on an exhibition organized by Con/Vida - Popular Arts of the Americas.

November 10 to January 7, 2019

SIoux CITY PUBLIC MUSEUM,
Sioux City, IA

The Power of Children: Making a Difference

Traveling. Based on an exhibition organized by the Children's Museum of Indianapolis.

November 10 to January 7, 2019

DESOTO COUNTY MUSEUM,
Hernando, MS

Jacob A. Riis and His Photographs: Revealing New York's Other Half

Traveling. Based on an exhibition organized by the Museum of the City of New York.

November 10 to January 7, 2019

CHURCHILL COUNTY MUSEUM &
ARCHIVES, Fallon, NV

Spirited: Prohibition in America

Traveling. Based on an exhibition organized by the National Constitution Center.

November 10 to January 7, 2019

BIRTHPLACE OF COUNTRY MUSIC
MUSEUM, Bristol, TN

For All The World To See:

Visual Culture and the Struggle for Civil Rights

Traveling. Based on an exhibition organized by the University of Maryland, Baltimore County.

November 10 to January 7, 2019

FULLERTON MUSEUM CENTER,
Fullerton, CA

Coney Island: Visions of an American Dreamland, 1861–2008

Traveling. Based on an exhibition organized by Wadsworth Atheneum.

PROGRAMS AND EVENTS

Becoming American

Viewing and discussion programs organized by City Lore, Inc. citylore.org
October to December

Community Conversations on Crime and Punishment

Public programs organized by the New School. statesofincarceration.org
October to December

Great Stories Club: Reading and Discussion for At-Risk Youth

Reading and discussion programs organized by the American Library Association. www.ala.org
October to December

Literature & Public Life:

Creating the Great Community
Reading and discussion programs organized by the Maine Humanities Council. mainehumanities.org
October to December

Music Unwound

Lecture programs organized by the Buffalo Philharmonic Orchestra Society. bpo.org

BUFFALO PHILARMONIC,
Buffalo, NY

October 11

SOUTH DAKOTA SYMPHONY,
Sioux Falls, SD

November 13 to November 20

Newest Americans

Public programs organized by Rutgers State University. newestamericans.com
October to December

One State/One Story:

Frankenstein

Public programs organized by the Indiana Humanities Council. indianahumanities.org
October to December

Oregon Humanities Community Conversations 2017-2020

Discussion programs organized by the Oregon Council for the Humanities. www.oregonhumanities.org
October to December

Public Knowledge

Public programs organized by the San Francisco Museum of Modern Art. publicknowledge.sfmoma.org
October to December

Third Coast Conversations:

Dialogues about Water

Public programs organized by the Michigan Humanities Council. www.michiganhumanities.org
October to December

BROADCASTS

OCTOBER

October 8 (check local listings)

The Circus

Written, produced, and directed by Sharon Grimberg. Coproduced by Melissa Martin Pollard. Mark Samels, executive producer for *American Experience*. www.pbs.org/wgbh/americanexperience/films/circus

October 30 (check local listings)

Shakespeare Uncovered: Series Three

Produced by Blakeway Productions, 116 Films, and THIRTEEN Productions LLC for WNET in association with PBS and Shakespeare's Globe. www.pbs.org/wnet/shakespeare-uncovered

October 14 (check local listings)

Itzhak

Directed and produced by Alison Chernick, Michael Kantor, executive producer for *American Masters*.
www.pbs.org/wnet/americanmasters/itzhak

October 16 (check local listings)

The Eugenics Crusade

Written and directed by Michelle Ferrari. Mark Samels, executive producer for *American Experience*.
www.pbs.org/wgbh/americanexperience/films/eugenics-crusade

ONGOING EXHIBITIONS AND WEBSITES

EAST

MYSTIC SEAPORT MUSEUM,
Mystic, CT

Voyaging in the Wake of the Whalers: The 38th Voyage of the Charles W. Morgan
Long-term. www.mysticseaport.org

NATIONAL BUILDING MUSEUM,
Washington, DC

House and Home
Long-term. www.nbm.org

SOLDIERS' HOME, Washington, DC
President Lincoln's Cottage at the Soldiers' Home

Long-term. Organized by the National Trust for Historic Preservation.
www.lincolncottage.org

MAINE STATE MUSEUM,
Augusta, ME

At Home in Maine
Long-term. mainestatemuseum.org

MAINE HISTORICAL SOCIETY,
Portland, ME

Maine Memory Network
Website. www.mainememory.net

MAINE HUMANITIES COUNCIL,
Portland, ME

Local and Legendary: Maine in the Civil War
Website. civilwar.mainememory.net

PORTLAND MUSEUM OF ART,
Portland, ME

Fine and Decorative Arts Collections
Reinstallation. www.portlandmuseum.org

BALTIMORE MUSEUM OF ART,
Baltimore, MD

African Art Collection
Reinstallation. www.artbma.org

BALTIMORE MUSEUM OF ART,
Baltimore, MD

The American Wing
Reinstallation. www.artbma.org

BALTIMORE MUSEUM OF INDUSTRY,
Baltimore, MD

The Kids' Cannery
Long-term. www.thebmi.org

BALTIMORE MUSEUM OF INDUSTRY,
Baltimore, MD

Garment Loft
Long-term. www.thebmi.org

WALTERS ART MUSEUM,
Baltimore, MD

Egyptian Collection
Reinstallation. www.thewalters.org

WALTERS ART MUSEUM,
Baltimore, MD

Medieval Collection
Reinstallation. www.thewalters.org

ST. MARY'S CITY, VAN SWERINGEN
SITE, St. Mary's City, MD

Van Sweringen Archaeological Site
Site interpretation. Organized by Historic St. Mary's City Commission.
www.stmaryscity.org

BOSTON CHILDREN'S MUSEUM,
Boston, MA

Boston Black: A City Connects
Long-term. www.bostonkids.org

COMMONWEALTH MUSEUM,
Boston, MA

Our Common Wealth: The Massachusetts Experiment in Democracy
Long-term. Organized by the Friends of the Commonwealth Museum.
www.sec.state.ma.us

USS CONSTITUTION MUSEUM,
Boston, MA

All Hands on Deck: A Sailor's Life in 1812
Long-term. www.usconstitutionmuseum.org

HARVARD ART MUSEUMS,
Cambridge, MA

Animal-Shaped Vessels from the Ancient World: Feasting with Gods, Heroes, and Kings
Traveling. www.harvardartmuseums.org

HARVARD UNIVERSITY,
Cambridge, MA

DoHistory
Website. www.dohistory.org

MOUNT AUBURN CEMETERY,
Cambridge, MA

Mount Auburn Cemetery: A New American Landscape
Long-term. www.mountauburn.org

CONCORD MUSEUM, Concord, MA
"Why Concord?" The History of Concord, Massachusetts
Long-term. www.concordmuseum.org

POCUMTUCK VALLEY MEMORIAL
ASSOCIATION, Deerfield, MA

Raid on Deerfield: The Many Stories of 1704
Website. 1704.deerfield.history.museum

POCUMTUCK VALLEY MEMORIAL
ASSOCIATION, Deerfield, MA

Impressions from a Lost World
Website. www.dinotracksdiscovery.org



Multiple Grammy Award-winning violinist Itzhak Perlman. Left: practicing at home. Courtesy, Chris Dapkins. Right: on stage. Courtesy, Ramsey Fendall. From the documentary *Itzhak*, airing on *American Masters* October 14 (check local listings). www.pbs.org/wnet/americanmasters/itzhak

MARTHA'S VINEYARD MUSEUM,
Edgartown, MA

**Laura Jernegan: Girl on
a Whaleship**

Website. www.girlonawhaleship.org

MARTHA'S VINEYARD MUSEUM,
Edgartown, MA

**Enchanted Isle: The Story of
Martha's Vineyard**

Long-term. www.mvmuseum.org

HOLYOKE HERITAGE STATE PARK,
CHILDREN'S MUSEUM AT
HOLYOKE, WISTARIAHURST
MUSEUM, Holyoke, MA

**Creating Holyoke:
Immigrants' and Migrants'
Search for Community**

Site interpretation. Organized by the
Wistariahurst Museum/City of Holyoke.
www.creatingholyokey.org

ARNOLD ARBORETUM OF
HARVARD UNIVERSITY,
Jamaica Plain, MA

**Science in the Pleasure
Ground: An Exploration of
Arboretum History**

Long-term. www.arboretum.harvard.edu

NEW BEDFORD WHALING
MUSEUM, New Bedford, MA
**From Pursuit to Preservation:
The Global Story of Whales
and Whaling**

Long-term.
[www.whalingmuseum.org/explore/exhibitions/
current/pursuit-to-preservation](http://www.whalingmuseum.org/explore/exhibitions/current/pursuit-to-preservation)

HANCOCK SHAKER VILLAGE,
Pittsfield, MA

Audio Tour
Site interpretation.

www.hancockshakervillage.org

PEABODY ESSEX MUSEUM,
Salem, MA
**Empresses of China's Forbidden
City, 1644-1912**

Closes February 10, 2019.
Traveling. www.pem.org

SPRINGFIELD TECHNICAL
COMMUNITY COLLEGE,
Springfield, MA

**Shays' Rebellion and the
Making of a Nation: From
Revolution to Constitution**

Website. www.shaysrebellion.stcc.edu

OLD STURBRIDGE VILLAGE,
Sturbridge, MA
**Farms, Families, and Change:
New England Farming and
Rural Life**

Site interpretation. www.osv.org

STRAWBERRY BANKE,
Portsmouth, NH
**Crossroads of a Neighborhood in
Change: The Corner Grocery
Store at Strawberry Banke
During WWII**

Long-term. www.strawberrybanke.org

STRAWBERRY BANKE,
Portsmouth, NH
**Becoming Americans: The
Shapiro Story, 1898-1928**

Long-term. www.strawberrybanke.org

NEWARK MUSEUM, Newark, NJ
Picturing America

Reinstallation. www.newarkmuseum.org

NEW YORK STATE MUSEUM,
Albany, NY
A Mohawk-Iroquois Village

Long-term. www.nysm.nysed.gov

BROOKLYN CHILDREN'S MUSEUM,
Brooklyn, NY
World Brooklyn

Long-term. www.brooklynkids.org

BROOKLYN HISTORICAL SOCIETY,
Brooklyn, NY
**Waterfront Exhibition: Water
Log and Visitor Vistas**
Website. www.brooklynhistory.org

BROOKLYN HISTORICAL SOCIETY,
Brooklyn, NY
**Crossing Borders, Bridging
Generations: A Study of Mixed-
Heritage Families in Brooklyn**
Website. cbbg.brooklynhistory.org/about

BROOKLYN HISTORICAL SOCIETY,
WEEKSVILLE HERITAGE CENTER,
IRONDALE CENTER, Brooklyn, NY
In Pursuit of Freedom
Long-term. Organized by the Brooklyn
Historical Society. www.brooklynhistory.org

BROOKLYN NAVY YARD,
Brooklyn, NY
**Brooklyn Navy Yard: Past,
Present, and Future**
Long-term. www.bldg92.com

EMPIRE STORES MUSEUM,
Brooklyn, NY
**Waterfront at Brooklyn
Historical Society DUMBO**
Long-term. Organized by the Brooklyn
Historical Society. www.brooklynhistory.org

THOMAS COLE NATIONAL
HISTORIC SITE, Catskill, NY
Hudson River School Art Trail
Website. www.hudsonriverschool.org

THOMAS COLE NATIONAL
HISTORIC SITE, Catskill, NY
**The Home and Studio of Thomas
Cole, Founder of the Hudson
River School of Art**
Long-term. www.thomascole.org

THOMAS COLE NATIONAL
HISTORIC SITE, Catskill, NY
A Guest in the Home
Long-term. www.thomascole.org

CENTER FOR NEW AMERICAN
MEDIA, INC., New York, NY
Past/Present
Website. www.pastpresent.org

CITY LORE, New York, NY
**Poetic Voices of the
Muslim World**
Website. www.pvmw.org

ELDRIDGE STREET SYNAGOGUE,
New York, NY
Museum at Eldridge Street
Site interpretation. Organized by the Eldridge
Street Project. www.eldridgestreet.org

ELLIS ISLAND, New York, NY
**Future in the Balance:
Immigration, Public Health, and
the Ellis Island Hospitals**
Long-term. Organized by Save Ellis Island,
Inc.. www.saveellisland.org

HENRY STREET SETTLEMENT,
New York, NY
**The House on Henry Street:
Settlements, Public Health, and
Social Reform**
Long-term. www.henrystreet.org

INTREPID SEA-AIR-SPACE MUSEUM,
New York, NY
City at Sea: USS *Intrepid*
Site interpretation. www.intrepidmuseum.org

LOWER EAST SIDE TENEMENT
MUSEUM, New York, NY
Shop Life
Long-term. www.tenement.org

LOWER EAST SIDE TENEMENT
MUSEUM, New York, NY
**97 Orchard Street
Tenement Tours**
Long-term. www.tenement.org

LOWER EAST SIDE TENEMENT
MUSEUM, New York, NY
103 Orchard Website
Website.
103orchard.tenement.org/stories/103-orchard

LOWER EAST SIDE TENEMENT
MUSEUM, New York, NY
**103 Orchard Street Under
One Roof Tours**
Long-term. www.tenement.org

MOUNT VERNON HOTEL MUSEUM
& GARDEN, New York, NY
**The Abigail Adams Smith
Museum as the Mount Vernon
Hotel (1826–1833)**
Reinstallation. Organized by the Colonial
Dames of America. www.mvhm.org

MUSEUM OF THE CITY OF NEW
YORK, New York, NY
New York at Its Core
Long-term. mcny.org

NEW-YORK HISTORICAL SOCIETY,
New York, NY
**Black Citizenship in the Age of
Jim Crow**
Closes March 3, 2019
Traveling. www.nyhistory.org

RUBIN MUSEUM OF ART,
New York, NY
**Explore Art: Life Through
Himalayan Paintings**
Website. exploreart.rma2.org

WNET.ORG, New York, NY
**Mission US: A Revolutionary
Way to Learn History**
Website. www.mission-us.org

ROCHESTER MUSEUM AND SCIENCE
CENTER, Rochester, NY
Expedition Earth
Reinstallation. www.rmssc.org

PHILIPSBURG MANOR,
Sleepy Hollow, NY
Philipsburg Manor
Site interpretation. Organized by Historic
Hudson Valley. www.hudsonvalley.org

LONG ISLAND MUSEUM OF
AMERICAN ART, HISTORY, AND
CARRIAGES, Stony Brook, NY
**Going Places: How Horse-Drawn
Vehicles Shaped American Life**
Long-term. www.longislandmuseum.org

LONG ISLAND MUSEUM OF
AMERICAN ART, HISTORY, AND
CARRIAGES, Stony Brook, NY
Streets of New York
Long-term. www.longislandmuseum.org

LONG ISLAND MUSEUM OF
AMERICAN ART, HISTORY, AND
CARRIAGES, Stony Brook, NY
Driving for Sport and Pleasure
Long-term. www.longislandmuseum.org

WTF, INC., Harrisburg, PA
ExplorePAHistory.com
Website. www.explorepahistory.com

JOSEPH PRIESTLEY HOME,
Northumberland, PA
**Joseph Priestley: Reason, Order,
and Plainness**
Site interpretation.
www.josephpriestleyhouse.org

PHILADELPHIA MUSEUM OF ART,
Philadelphia, PA
European Collections
Reinstallation. www.philamuseum.org

PHILADELPHIA OUTDOOR
SCULPTURE SITES,
Philadelphia, PA
Museum Without Walls
Walking tour. Organized by the Association
for Public Art. associationforpublicart.org

PLEASE TOUCH MUSEUM®,
Philadelphia, PA
Centennial Exploration
Long-term. www.pleasetouchmuseum.org

UNIVERSITY OF PENNSYLVANIA
MUSEUM OF ARCHAEOLOGY
AND ANTHROPOLOGY,
Philadelphia, PA
**Galleries of the Ancient
Middle East**
Reinstallation. www.penn.museum

CARNEGIE MUSEUM OF NATURAL
HISTORY, Pittsburgh, PA
Walton Hall of Ancient Egypt
Long-term. www.carnegiemnh.org

CARNEGIE MUSEUM OF NATURAL
HISTORY, Pittsburgh, PA
**Alcoa Foundation Hall of
American Indians**
Long-term. www.carnegiemnh.org



The circus aerialist La Norma Fox, from the documentary *The Circus* airing on *American Experience* October 8 (check local listings). Courtesy, Collection of the John and Mable Ringling Museum of Art, the State Art Museum of Florida, Florida State University. www.pbs.org/wgbh/AmericanExperience/films/circus

CHILDREN'S MUSEUM OF
PITTSBURGH, Pittsburgh, PA
**Native Voices: New England
Tribal Families Exhibit Tour**
Closes January 7, 2019
Traveling. Organized by the Boston Children's
Museum. www.bostonchildrensmuseum.org

SENATOR JOHN HEINZ PITTSBURGH
REGIONAL HISTORY CENTER,
Pittsburgh, PA
**Pittsburgh: A Tradition
of Innovation**
Long-term. www.pghhistory.org

MUSEUM OF NEWPORT HISTORY,
Newport, RI
**Museum of Newport History at
the Brick Market**
Long-term. Organized by the Newport
Historical Society and the Museum of Newport
History. www.newporthistorical.org

MUSEUM OF WORK AND CULTURE,
Woonsocket, RI
**La Survivance: French-Canadians
in Woonsocket, Rhode Island**
Long-term. Organized by the Rhode Island
Historical Society. www.rihs.org

ROKEBY MUSEUM, Ferrisburgh, VT
**Underground Railroad
in Vermont**
Long-term. www.rokeby.org

AMERICAN PRECISION MUSEUM,
Windsor, VT
Shaping America
Long-term. www.americanprecision.org

MIDWEST
FIELD MUSEUM, Chicago, IL
Africa
Long-term. www.fieldmuseum.org

FIELD MUSEUM, Chicago, IL
Peoples of the Pacific: Traveling the Pacific and Pacific Spirits
Long-term. www.fieldmuseum.org

HULL-HOUSE MUSEUM,
Chicago, IL
Redefining Democracy: Jane Addams and the Hull-House Settlement
Reinstallation. Organized by the University of Illinois at Chicago.
www.hullhousemuseum.org

NATIONAL MUSEUM OF MEXICAN ART, Chicago, IL
Nuestras Historias: Stories of Mexican Identity from the National Museum of Mexican Art's Permanent Collection
Reinstallation.
www.nationalmuseumofmexicanart.org

NEWBERRY LIBRARY, Chicago, IL
The Indians of the Midwest
Website. www.newberry.org

WINDOW TO THE WORLD COMMUNICATIONS, Chicago, IL
Studs Terkel Radio Archive
Website. studsterkel.wfmt.com

CAHOKIA MOUNDS MUSEUM SOCIETY, Collinsville, IL
Mark of the Mississippians
Website. www.archaeoexplorer.com/media

ILLINOIS STATE MUSEUM,
Springfield, IL
At Home in the Heartland
Long-term. www.museum.state.il.us

CONNER PRAIRIE, Fishers, IN
1863 Civil War Journey: Raid on Indiana
Long-term. connerprairie.org

LEVI COFFIN STATE HISTORIC SITE,
Fountain City, IN
Souls Seeking Safety: Interpreting the Underground Railroad Experience in Indiana
Long-term. Organized by the Indiana State Museum Foundation, Inc.
www.indianamuseum.org

CHILDREN'S MUSEUM OF INDIANAPOLIS, Indianapolis, IN
The Power of Children: Making a Difference
Long-term.
www.childrensmuseum.org/themuseum/powerofchildren/html/index.html

MISSISSIPPI RIVER MUSEUM AND AQUARIUM, Dubuque, IA
River Discovery
Long-term. Organized by the Dubuque County Historical Society.
www.mississippirivermuseum.com

THE HENRY FORD MUSEUM,
Dearborn, MI
Made in America: The History of the American Industrial System
Long-term. www.thehenryford.org

THE HENRY FORD MUSEUM,
Dearborn, MI
Heroes of the Sky: Adventures in Early Flight
Long-term. www.thehenryford.org

THE HENRY FORD MUSEUM,
Dearborn, MI
Your Place in Time: 20th-Century America
Long-term. www.thehenryford.org

DETROIT INSTITUTE OF ARTS,
Detroit, MI
Great Art: New Start
Reinstallation. www.dia.org

MICHIGAN STATE UNIVERSITY,
East Lansing, MI
Voices from Detroit: American Black Journal Online
Website. www.matrix.msu.edu/~abj

GRAND RAPIDS PUBLIC MUSEUM,
Grand Rapids, MI
Anishinabek: The People of This Place
Long-term. www.grmuseum.org

GRAND RAPIDS PUBLIC MUSEUM,
Grand Rapids, MI
Newcomers: The People of This Place
Long-term. www.grmuseum.org

INTERNATIONAL WOLF CENTER,
Ely, MN
Wolves and Humans: Coexistence, Competition, and Conflict
Long-term. Organized by the Science Museum of Minnesota. www.wolf.org

MILL CITY MUSEUM,
Minneapolis, MN
Mill City Museum
Long-term. Organized by the Minnesota Historical Society. www.millcitymuseum.org

MINNEAPOLIS INSTITUTE OF ART,
Minneapolis, MN
Material Journeys: African Art in Motion
Reinstallation. Organized by the Minneapolis Society of Fine Arts. www.artsmia.org

MILLE LACS INDIAN MUSEUM,
Onamia, MN
Learn About Our Past: The Story of the Mille Lacs Band of Ojibwe
Long-term. Organized by the Minnesota Historical Society. www.mnhs.org

LANDMARK CENTER, St. Paul, MN
Uncle Sam Worked Here
Long-term. Organized by the Minnesota Landmarks. www.landmarkcenter.org

MINNESOTA HISTORICAL SOCIETY,
St. Paul, MN
Open House
Long-term. www.mnhs.org

MINNESOTA HISTORICAL SOCIETY,
St. Paul, MN
Play the Past: Humanities for the Next Generation
Mobile app. www.mnhs.org

MINNESOTA HISTORY CENTER,
St. Paul, MN
Minnesota's Greatest Generation: The Depression, The War, The Boom
Long-term. Organized by the Minnesota Historical Society.
www.mnhs.org/people/mngg/index.htm



Photographs of *Club Ebony* from *the Mississippi Blues Commission Blues Trail*, a 300-mile driving trail in Mississippi. Courtesy, the Mississippi Blues Commission. www.msbluestrail.org

MINNESOTA PUBLIC RADIO,
St. Paul, MN

On Being

Website. www.onbeing.org

UNIVERSITY OF NEBRASKA, BOARD
OF REGENTS, Lincoln, NE

**The Journals of the Lewis and
Clark Expedition Online Edition**

Website. lewisandclarkjournals.unl.edu

CINCINNATI ART MUSEUM,
Cincinnati, OH

**The Cincinnati Wing: The Story
of Art in the Queen City**

Long-term. www.cincinnatiartmuseum.org

DITTRICK MUSEUM OF MEDICAL
HISTORY, CASE WESTERN RESERVE
UNIVERSITY, Cleveland, OH

How Medicine Became Modern

Website. artsci.case.edu/Dittrick

KENT STATE UNIVERSITY,
VISITORS CENTER, Kent, OH

**Making Meaning of May 4th:
The Kent State Shootings in
American History**

Long-term. www.kent.edu

OHIO STATE UNIVERSITY,
Newark, OH

**The Ancient Ohio Trail:
A Media-Enhanced Cultural
Heritage Experience**

Website. www.ancientohiotrail.org

SOUTH DAKOTA STATE HISTORICAL
SOCIETY, CULTURAL HERITAGE
CENTER, Pierre, SD

Proving Up

Long-term.

history.sd.gov/museum/exhibits/gallery.aspx

CHIPPEWA VALLEY MUSEUM,
Eau Claire, WI

**Farm Life: A Century of
Change for Farm Families
and Their Neighbors**

Long-term. www.cvmuseum.com

CHIPPEWA VALLEY MUSEUM,
Eau Claire, WI

**Changing Currents:
Reinventing the
Chippewa Valley**

Long-term. www.cvmuseum.com

MILWAUKEE PUBLIC MUSEUM,
Milwaukee, WI

A Tribute to Survival

Long-term. www.mpm.edu

SOUTH

CARL ELLIOTT HOUSE MUSEUM,
Jasper, AL

Carl Elliott House

Long-term. Organized by Beville State
Community College.

[www.bscc.edu/community-resources/
carl-elliott-house-museum](http://www.bscc.edu/community-resources/carl-elliott-house-museum)

FLORIDA MUSEUM OF NATURAL
HISTORY, Gainesville, FL

South Florida:

People and Environments

Long-term. Organized by the University of
Florida. www.flmnh.ufl.edu

MISSION SAN LUIS, Tallahassee, FL

**San Luis de Apalachee:
Interpretation of a 17th-Century
Spanish Mission**

Long-term. Organized by the Florida Division
of Historical Resources.

www.missionsanluis.org

ATLANTA HISTORY CENTER,
Atlanta, GA

**Turning Point: The American
Civil War**

Long-term. www.atlhist.org

SOCIETY OF BIBLICAL LITERATURE,
Decatur, GA
**Bible Odyssey: Exploring People,
Places, and Passages**
Website. www.bibleodyssey.com

300-MILE DRIVING TRAIL,
Indianola, MS
**Mississippi Blues Commission
Blues Trail**
Site interpretation. Organized by the
Mississippi Blues Commission.
www.msbluestrail.org

SMITH ROBERTSON MUSEUM &
CULTURAL CENTER, Jackson, MS
**Field to Factory: Afro-American
Migration, 1915-1940**
Long-term.
www.jacksonms.gov/index.aspx?nid=143

LAUREN ROGERS MUSEUM OF ART,
Laurel, MS
**By Native Hands: Woven
Treasures from the Lauren
Rogers Museum of Art**
Reinstallation. www.lirma.org

LEVINE MUSEUM OF THE NEW
SOUTH, Charlotte, NC
**Cotton Fields to Skyscrapers:
Charlotte and the Carolina
Piedmont in the New South**
Long-term. www.museumofthenewsouth.org

MUSEUM OF THE CHEROKEE
INDIAN, Cherokee, NC
**Emissaries of Peace: The 1762
Cherokee/British Delegations**
Long-term. www.cherokeemuseum.org

OLD SALEM, Winston-Salem, NC
**The Moravian Way of Health
and Healing**
Long-term. www.oldsalem.org

HERMITAGE, Hermitage, TN
**The Hermitage, Andrew Jackson,
and a Changing America**
Site interpretation. www.thehermitage.com

EAST TENNESSEE HISTORICAL
SOCIETY, Knoxville, TN
**Voices of the Land: The People
of East Tennessee**
Long-term. www.easttnhistory.org

NATIONAL CIVIL RIGHTS MUSEUM,
Memphis, TN
Lorraine Motel Exhibits
Long-term. www.civilrightsmuseum.org

MONTICELLO, Charlottesville, VA
**Domestic Life and the
Plantation Community
at Jefferson's Monticello**
Site interpretation. Organized by the Thomas
Jefferson Memorial Foundation.
www.monticello.org

MONTICELLO, Charlottesville, VA
**Mulberry Row and the
Landscape of Slavery at
Jefferson's Monticello**
Site interpretation. Organized by the
Thomas Jefferson Memorial Foundation.
www.monticello.org

MONTICELLO VISITOR CENTER,
Charlottesville, VA
To Try All Things
Long-term. Organized by the Thomas Jefferson
Memorial Foundation. www.monticello.org

UNIVERSITY OF VIRGINIA,
Charlottesville, VA
**Slavery and the African
American Experience in Virginia,
1619-1861: A Project of
Encyclopedia Virginia**
Website. www.encyclopediavirginia.org/vr

GEORGE MASON UNIVERSITY,
Fairfax, VA
**Hidden Histories on America's
Front Lawn**
Website. mobile.mallhistory.us

GEORGE MASON UNIVERSITY,
Fairfax, VA
Gulag: Many Days, Many Lives
Website. gulaghistory.org

R. R. MOTON HIGH SCHOOL,
Farmville, VA
**The Moton School Story:
Children of Courage**
Long-term. Organized by the Robert R. Moton
Museum. www.motonmuseum.org

MAYMONT, Richmond, VA
**In Service and Beyond:
Domestic Work and Life in
a Gilded Age Mansion**
Long-term. www.maymont.org

VALENTINE RICHMOND HISTORY
CENTER, Richmond, VA
**Creating History:
The Valentine Family
and the Valentine Museum**
Long-term. thevalentine.org

VIRGINIA HISTORICAL SOCIETY,
Richmond, VA
**An American Turning Point:
The Civil War in Virginia**
Website. Organized by the Virginia
Sesquicentennial of the American
Civil War Commission.
[www.vahistorical.org/civilwar/
introduction.htm](http://www.vahistorical.org/civilwar/introduction.htm)

COLONIAL WILLIAMSBURG,
Williamsburg, VA
**From Subjects to Citizens:
Williamsburg and the
American Revolution**
Website. www.ouramericanrevolution.org

SOUTHWEST
BISBEE MINING & HISTORICAL
MUSEUM, Bisbee, AZ
**Bisbee: Urban Outpost on
the Frontier**
Long-term. www.bisbeemuseum.org

FORT APACHE HISTORIC PARK,
Fort Apache, AZ
**Transitions in the Apache World:
The Fort Apache Legacy**
Long-term. Organized by the White Mountain
Apache Tribe.
www.wmat.nsn.us/fortapachepark.htm

Scowen & Co., Kandian Chief, c.1870, albumen silver print, 10 1/4 x 7 3/4 in. Los Angeles County Museum of Art, gift of Gloria Katz and Willard Huyck, photo © Museum Associates/LACMA. From the exhibition ***The Jeweled Isle: Art from Sri Lanka*** at the Los Angeles County Museum of Art, Los Angeles, California. Courtesy, Los Angeles County Museum of Art. www.lacma.org



A:SHIWI A:WAN MUSEUM AND HERITAGE CENTER, Zuni, NM
Hawikku: Echoes from Our Past
Long-term. ashiwi-museum.org

OKLAHOMA HISTORY CENTER, Oklahoma City, OK
We Are Who We Were
Long-term. www.okhistory.org

BOB BULLOCK TEXAS STATE HISTORY MUSEUM, Austin, TX
La Belle: The Ship That Changed History
Long-term. www.thestoryoftexas.com

AFRICAN AMERICAN MUSEUM, Dallas, TX
Slavery at Jefferson's Monticello: Paradox of Liberty
Closes January 2, 2019
Traveling. Organized by the Thomas Jefferson Foundation. home.monticello.org

WEST

UNIVERSITY OF ALASKA MUSEUM, Fairbanks, AK
Rose Berry Alaskan Art Gallery
Reinstallation. www.uaf.edu/museum

PRATT MUSEUM, Homer, AK
Kachemak Bay, Alaska: An Exploration of People and Place
Reinstallation. www.prattmuseum.org

FORT ROSS STATE HISTORIC PARK, Jenner, CA
Rotchev House Museum
Long-term. Organized by the Fort Ross Interpretive Association. www.fortrossinterpretive.org

FOWLER MUSEUM OF CULTURAL HISTORY, UNIVERSITY OF CALIFORNIA, LOS ANGELES, Los Angeles, CA
Intersections: World Arts, Local Lives
Reinstallation. www.fowler.ucla.edu

UNIVERSITY OF SOUTHERN CALIFORNIA, Los Angeles, CA
Walden, A Game
Digital game. www.waldengame.com

DESERT BOTANICAL GARDEN, Phoenix, AZ
Plants and People of the Sonoran Desert
Long-term. www.dbg.org

HEARD MUSEUM, Phoenix, AZ
Remembering Our Indian School Days: The Boarding School Experience
Long-term. www.heard.org

ARIZONA STATE UNIVERSITY, Tempe, AZ
Nature, Culture, and History at the Grand Canyon
Website. grandcanyonhistory.clas.asu.edu

ARIZONA STATE MUSEUM, Tucson, AZ
Paths of Life: American Indians of the Southwest
Long-term. Organized by the University of Arizona. www.statemuseum.arizona.edu

MAXWELL MUSEUM OF ANTHROPOLOGY, Albuquerque, NM
Ancestors
Long-term. www.unm.edu/~maxwell

MAXWELL MUSEUM OF ANTHROPOLOGY, Albuquerque, NM
People of the Southwest
Long-term. www.unm.edu/~maxwell

MUSEUM OF INDIAN ARTS AND CULTURE, Santa Fe, NM
Here, Now, and Always
Long-term. Organized by the Museum of New Mexico Foundation. www.miaclab.org

EL CAMINO REAL INTERNATIONAL HERITAGE CENTER, Socorro, NM
Traveling el Camino Real: Caminando el Camino Real
Long-term. Organized by the Museum of New Mexico. www.nmmonuments.org

OAKLAND MUSEUM OF CALIFORNIA, Oakland, CA
Coming to California: The Gallery of California History
Long-term. www.museumca.org

PERALTA HACIENDA HISTORICAL PARK, Oakland, CA
Becoming California, Becoming America
Site interpretation. Organized by the Friends of Peralta Hacienda Historical Park. www.peraltahacienda.org

MUSEUM OF HISTORY AND ART, ONTARIO, Ontario, CA
Road Ways
Long-term. Organized by the Museum of History and Art. www.ontarioca.gov/museum

ASIAN ART MUSEUM OF SAN FRANCISCO, San Francisco, CA
Permanent Collections Galleries
Long-term. www.asianart.org

CHINESE HISTORICAL SOCIETY OF AMERICA, San Francisco, CA
Chinese American: Exclusion/Inclusion
Long-term. Organized by the New-York Historical Society. chsa.org

COIT TOWER, RINCON ANNEX, CITY COLLEGE, MARINE MARITIME MUSEUM, San Francisco, CA
New Deal Murals of San Francisco
Walking tour. Organized by KQED, Inc. www.kqed.org

MOLLY BROWN HOUSE MUSEUM, Denver, CO
Molly Brown: The Biography of a Changing Nation
Long-term. www.mollybrown.org

KONA COFFEE FARM, Captain Cook, HI
Kona Coffee Living History Farm: A Glimpse into the Lifestyle of Kona's Coffee Pioneers
Site interpretation. Organized by the Kona Historical Society. www.konahistorical.org

KONA HISTORIC RANCH, Kealahou, HI
H. N. Greenwell Store Museum: Experience 19th-Century Life in the Hawaiian Kingdom
Site interpretation. Organized by the Kona Historical Society. www.konahistorical.org

IDAHO STATE MUSEUM, Boise, ID
Idaho: The Land and Its People
Long-term. history.idaho.gov/museum

C. M. RUSSELL MUSEUM, Great Falls, MT
The Bison: American Icon, Heart of Plains Indian Culture
Long-term. Organized by the Trigg C. M. Russell Foundation. cmrussell.org

HIGH DESERT MUSEUM, Bend, OR
By Hand Through Memory: Native People of the Columbia River Plateau in the Twentieth Century
Long-term. www.highdesertmuseum.org

UTAH MUSEUM OF NATURAL HISTORY, Salt Lake City, UT
Native Voices: People of the Great Basin and Colorado Plateau
Long-term. umnh.utah.edu/home

BURKE MUSEUM OF NATURAL HISTORY AND CULTURE, UNIVERSITY OF WASHINGTON, Seattle, WA
Pacific Voices
Long-term. www.washington.edu/burkemuseum

MUSEUM OF HISTORY AND INDUSTRY, Seattle, WA
WW1 America
Closes February 10, 2019
Traveling. Organized by the Minnesota Historical Society. www.mnhs.org

PLAINS INDIAN MUSEUM, Cody, WY
Plains Indian Museum
Reinstallation. Organized by the Buffalo Bill Center of the West. centerofthewest.org

All events, exhibitions, and programs listed are supported by grants from the National Endowment for the Humanities, Division of Public Programs, 400 7th Street, SW, Washington, DC 20506, (202) 606-8269, PublicPgms@neh.gov. Please contact the host institution for exact dates and times. For more information about NEH and its programs, we invite you to visit our website at www.neh.gov

NATIONAL ENDOWMENT
FOR THE HUMANITIES
WASHINGTON, D.C. 20506
OFFICIAL BUSINESS
PENALTY FOR PRIVATE USE,
\$300

