

EXHIBITION OPENINGS



Empress Xiaoxian (detail). Ignatius Sichelbarth (Ai Qimeng; Bohemia, 1708–1780), Yi Lantai (active about 1748–86), and possibly Wang Ruxue (active 18th century), Qianlong period, 1777, with repainting possibly in the nineteenth century. Hanging scroll, ink and color on silk, 99 1/8 × 45 3/8 in., Peabody Essex Museum, gift of Mrs. Elizabeth Sturgis Hinds, 1956, E33619. From the exhibition *Empresses of China's Forbidden City, 1644–1912* at the Peabody Essex Museum, Salem, Massachusetts. Courtesy, Peabody Essex Museum. Photo, Walter Silver/PEM. www.pem.org

AUGUST

August 18 to February 10, 2019

PEABODY ESSEX MUSEUM,
Salem, MA

Empresses of China's Forbidden City, 1644–1912

Traveling. www.pem.org

SEPTEMBER

September 1 to February 10, 2019

MUSEUM OF HISTORY AND
INDUSTRY, Seattle, WA

WW1 America

Traveling. Organized by the Minnesota
Historical Society. www.mnhs.org

September 6

HARVARD ART MUSEUMS,
Cambridge, MA

Animal-Shaped Vessels from the Ancient World: Feasting with Gods, Heroes, and Kings

Traveling. www.harvardartmuseums.org

September 7 to March 3, 2019

NEW-YORK HISTORICAL SOCIETY,
New York, NY

Black Citizenship in the Age of Jim Crow

Traveling. www.nyhistory.org

September 22 to January 7, 2019

CHILDREN'S MUSEUM OF
PITTSBURGH, Pittsburgh, PA

Native Voices: New England Tribal Families

Traveling. Organized by the Boston Children's
Museum. www.bostonchildrensmuseum.org

September 22 to January 2, 2019

AFRICAN AMERICAN MUSEUM,
Dallas, TX

Slavery at Jefferson's Monticello: Paradox of Liberty

Traveling. Organized by the Thomas Jefferson
Foundation. home.monticello.org

NEH ON THE ROAD

NEH on the Road is an initiative of the Division of Public Programs—in cooperation with Mid-America Arts Alliance—to extend the reach of NEH-funded, large-scale exhibitions. Smaller versions of these exhibitions, supported by specially designed education guides and program materials, travel to institutions in underserved areas of the country. Please contact the Mid-America Arts Alliance if you would like to host any of these exhibitions. Additional NEH on the Road exhibits are listed under the Ongoing Exhibitions Section. www.nehontheroad.org.

September 1 to October 20

TEMPLE RAILROAD & HERITAGE MUSEUM, Temple, TX
Coney Island: Visions of an American Dreamland, 1861–2008
Traveling. Based on an exhibition organized by Wadsworth Atheneum.

September 1 to October 20

SUNY, GENESEO, Geneseo, NY
Bandits & Heroes, Poets & Saints: Popular Art of the Northeast of Brazil
Traveling. Based on an exhibition organized by Con/Vida - Popular Arts of the Americas.

September 1 to October 20

LAKE JACKSON HISTORICAL MUSEUM, Lake Jackson, TX
The Power of Children: Making a Difference
Traveling. Based on an exhibition organized by the Children's Museum of Indianapolis.

September 1 to October 20

TARRANT COUNTY COLLEGE, Fort Worth, TX
Jacob A. Riis and His Photographs: Revealing New York's Other Half
Traveling. Based on an exhibition organized by the Museum of the City of New York.

September 1 to October 20

STATE HISTORICAL SOCIETY OF IOWA, Des Moines, IA
Spirited: Prohibition in America
Traveling. Based on an exhibition organized by the National Constitution Center.

September 1 to October 20

MCCLUNG MUSEUM, UNIVERSITY OF TENNESSEE KNOXVILLE, Knoxville, TN

For All The World To See:

Visual Culture and the Struggle for Civil Rights

Traveling. Based on an exhibition organized by the University of Maryland, Baltimore County.

PROGRAMS AND EVENTS

Community Conversations on Crime and Punishment

Public programs organized by the New School, New York, New York. statesofincarceration.org
July to September

Great Stories Club: Reading and Discussion for At-Risk Youth

Reading and discussion programs organized by the American Library Association, Chicago, Illinois. www.ala.org
August to September

Literature & Public Life: Creating the Great Community

Reading and discussion programs organized by the Maine Humanities Council. mainehumanities.org
July to September

Newest Americans

Public programs organized by Rutgers State University. newestamericans.com
July to September

One State/One Story: Frankenstein

Public programs organized by the Indiana Humanities Council. indianahumanities.org
July to September

Oregon Humanities Community Conversations 2017-2020

Discussion programs organized by the Oregon Council for the Humanities. www.oregonhumanities.org
July to September

Public Knowledge

Discussion programs organized by the San Francisco Museum of Modern Art. publicknowledge.sfmoma.org
July to September

Third Coast Conversations: Dialogues about Water

Public programs organized by the Michigan Humanities Council. www.michiganhumanities.org
July to September

ONGOING EXHIBITIONS AND WEBSITES

EAST

MYSTIC SEAPORT MUSEUM, Mystic, CT

Voyaging in the Wake of the Whalers: The 38th Voyage of the Charles W. Morgan

Long-term. www.mysticseaport.org

NATIONAL BUILDING MUSEUM, Washington, DC

House and Home

Long-term. www.nbm.org

SOLDIERS' HOME, Washington, DC
President Lincoln's Cottage at the Soldiers' Home

Long-term. Organized by the National Trust for Historic Preservation. www.lincolncottage.org

MAINE STATE MUSEUM, Augusta, ME

At Home in Maine

Long-term. mainestatemuseum.org

MAINE HISTORICAL SOCIETY, Portland, ME

Maine Memory Network Website. www.mainememory.net

MAINE HUMANITIES COUNCIL, Portland, ME

Local and Legendary: Maine in the Civil War

Website. civilwar.mainememory.net



Left: *Rhyton Forepart in the Form of a Centaur*, Hellenistic, mid-2nd century BCE, Falerii (Italy), silver, H. 22 cm (8 11/16 in.), Kunsthistorisches Museum, VII a49, © KHM-Museumsverband. Courtesy, Harvard Art Museums. Right: *Rhyton with the Forepart of a Ram*, Achaemenid, 5th century BCE, silver, 20 x 12 x 12.3 cm (7 7/8 x 4 3/4 x 4 13/16 in.) Metropolitan Museum of Art, Gift of Norbert Schimmel Trust, 1989.281.30. Courtesy of the Metropolitan Museum of Art, New York. From the exhibition *Animal-Shaped Vessels from the Ancient World: Feasting with Gods, Heroes, and Kings* at the Harvard Art Museums, Cambridge, Massachusetts. www.harvardartmuseums.org

PORTLAND MUSEUM OF ART,
Portland, ME
**Fine and Decorative
Arts Collections**
Reinstallation. www.portlandmuseum.org

BALTIMORE MUSEUM OF ART,
Baltimore, MD
African Art Collection
Reinstallation. www.artbma.org

BALTIMORE MUSEUM OF ART,
Baltimore, MD
The American Wing
Reinstallation. www.artbma.org

BALTIMORE MUSEUM OF INDUSTRY,
Baltimore, MD
Garment Loft
Long-term. www.thebmi.org

BALTIMORE MUSEUM OF INDUSTRY,
Baltimore, MD
The Kids' Cannery
Long-term. www.thebmi.org

WALTERS ART MUSEUM,
Baltimore, MD
Egyptian Collection
Reinstallation. www.thewalters.org

WALTERS ART MUSEUM,
Baltimore, MD
Medieval Collection
Reinstallation. www.thewalters.org

ST. MARY'S CITY, VAN SWERINGEN
SITE, St. Mary's City, MD
**Van Sweringen
Archaeological Site**
Site interpretation. Organized by Historic
St. Mary's City Commission.
www.stmaryscity.org

BOSTON CHILDREN'S MUSEUM,
Boston, MA
Boston Black: A City Connects
Long-term. www.bostonkids.org

COMMONWEALTH MUSEUM,
Boston, MA
**Our Common Wealth:
The Massachusetts
Experiment in Democracy**
Long-term. Organized by the Friends of the
Commonwealth Museum.
www.sec.state.ma.us

USS CONSTITUTION MUSEUM,
Boston, MA
**All Hands on Deck: A Sailor's
Life in 1812**
Long-term. www.usconstitutionmuseum.org

HARVARD UNIVERSITY,
Cambridge, MA
DoHistory
Website. www.dohistory.org

MOUNT AUBURN CEMETERY,
Cambridge, MA
**Mount Auburn Cemetery:
A New American Landscape**
Long-term. www.mountauburn.org

CONCORD MUSEUM, Concord, MA
"Why Concord?" The History of Concord, Massachusetts
Long-term. www.concordmuseum.org

POCUMTUCK VALLEY MEMORIAL ASSOCIATION, Deerfield, MA
Impressions from a Lost World
Website. www.dinotracksdiscovery.org

POCUMTUCK VALLEY MEMORIAL ASSOCIATION, Deerfield, MA
Raid on Deerfield: The Many Stories of 1704
Website. 1704.deerfield.history.museum

MARTHA'S VINEYARD MUSEUM, Edgartown, MA
Enchanted Isle: The Story of Martha's Vineyard
Long-term.
www.mvmuseum.org/permanent.php#enchantedisle

MARTHA'S VINEYARD MUSEUM, Edgartown, MA
Laura Jernegan: Girl on a Whaleship
Website. www.girlonawhaleship.org

HOLYOKE HERITAGE STATE PARK, CHILDREN'S MUSEUM AT HOLYOKE, WISTARIAHURST MUSEUM, Holyoke, MA
Creating Holyoke: Immigrants' and Migrants' Search for Community
Site interpretation. Organized by the Wistariahurst Museum/City of Holyoke.
www.creatingholyokey.org

ARNOLD ARBORETUM OF HARVARD UNIVERSITY, Jamaica Plain, MA
Science in the Pleasure Ground: An Exploration of Arboretum History
Long-term. www.arboretum.harvard.edu

John Rogers, *Uncle Ned's School*, 1866. From the exhibition **Black Citizenship in the Age of Jim Crow** at the New-York Historical Society, New York, New York. Courtesy, New-York Historical Society. www.nyhistory.org



NEW BEDFORD WHALING MUSEUM, New Bedford, MA
From Pursuit to Preservation: The Global Story of Whales and Whaling
Long-term.
www.whalingmuseum.org/explore/exhibitions/current/pursuit-to-preservation

HANCOCK SHAKER VILLAGE, Pittsfield, MA
Audio Tour
Site interpretation.
www.hancockshakervillage.org

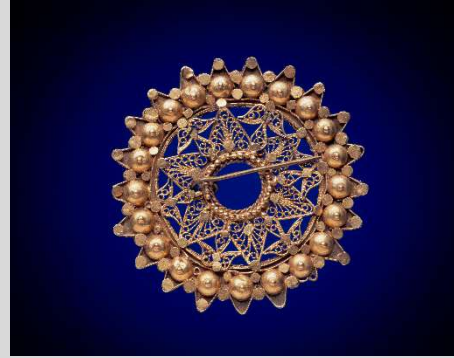
SPRINGFIELD TECHNICAL COMMUNITY COLLEGE, Springfield, MA
Shays' Rebellion and the Making of a Nation: From Revolution to Constitution
Website. www.shaysrebellion.stcc.edu

OLD STURBRIDGE VILLAGE, Sturbridge, MA
Farms, Families, and Change: New England Farming and Rural Life
Site interpretation. www.osv.org

STRAWBERRY BANKE, Portsmouth, NH
Crossroads of a Neighborhood in Change: The Corner Grocery Store at Strawberry Banke During WWII
Long-term. www.strawberrybanke.org

STRAWBERRY BANKE, Portsmouth, NH
Becoming Americans: The Shapiro Story, 1898-1928
Long-term. www.strawberrybanke.org

NEWARK MUSEUM, Newark, NJ
Picturing America
Reinstallation. www.newarkmuseum.org



Left: A112454c—Iron and copper alloy pendant. Geographic location: Tuareg, Gao, Mali. Right: A112450c—Gold filigree brooch, Kabyles from Angola. From the exhibition *Africa* at the Field Museum, Chicago, Illinois. Courtesy, the Field Museum. Credit: John Weinstein. www.fieldmuseum.org

NEW YORK STATE MUSEUM,
Albany, NY
A Mohawk-Iroquois Village
Long-term. www.nysm.nysed.gov

NEW YORK BOTANICAL GARDEN,
Bronx, NY
Georgia O'Keeffe:
Visions of Hawai'i
Closes October 28.
Traveling. www.nybg.org

BROOKLYN CHILDREN'S MUSEUM,
Brooklyn, NY
World Brooklyn
Long-term. www.brooklynkids.org

BROOKLYN HISTORICAL SOCIETY,
Brooklyn, NY
Waterfront Exhibition: Water
Log and Visitor Vistas
Website. www.brooklynhistory.org

BROOKLYN HISTORICAL SOCIETY,
Brooklyn, NY
Crossing Borders, Bridging
Generations: A Study of Mixed-
Heritage Families in Brooklyn
Website. cbbg.brooklynhistory.org/about

BROOKLYN HISTORICAL SOCIETY,
WEEKSVILLE HERITAGE CENTER,
IRONDALE CENTER, Brooklyn, NY
In Pursuit of Freedom
Long-term. Organized by the Brooklyn
Historical Society. www.brooklynhistory.org

BROOKLYN NAVY YARD,
Brooklyn, NY
Brooklyn Navy Yard: Past,
Present, and Future
Long-term. www.bldg92.com

EMPIRE STORES MUSEUM,
Brooklyn, NY
Waterfront at Brooklyn
Historical Society DUMBO
Long-term. Organized by the Brooklyn
Historical Society. www.brooklynhistory.org

THOMAS COLE NATIONAL
HISTORIC SITE, Catskill, NY
A Guest in the Home
Long-term. www.thomascole.org

THOMAS COLE NATIONAL
HISTORIC SITE, Catskill, NY
The Home and Studio of Thomas
River School of Art
Long-term. www.thomascole.org

THOMAS COLE NATIONAL
HISTORIC SITE, Catskill, NY
Hudson River School Art Trail
Website. www.hudsonriverschool.org

CENTER FOR NEW AMERICAN
MEDIA, INC., New York, NY
Past/Present
Website. www.pastpresent.org

CITY LORE, New York, NY
Poetic Voices of the
Muslim World
Website. www.pvmw.org

ELDRIDGE STREET SYNAGOGUE,
New York, NY
Museum at Eldridge Street
Site interpretation. Organized by the Eldridge
Street Project. www.eldridgestreet.org

ELLIS ISLAND, New York, NY
Future in the Balance:
Immigration, Public Health, and
the Ellis Island Hospitals
Long-term. Organized by Save Ellis Island, Inc.
www.saveellisland.org



Georgia O'Keeffe, *Hibiscus with Plumeria*, 1939, Oil on canvas, 40 x 30 in., Smithsonian American Art Museum, Gift of Sam Rose and Julie Walters, 2004.30.6 © 2018 Georgia O'Keeffe Museum / Artists Rights Society (ARS), New York. From the exhibition *Georgia O'Keeffe: Visions of Hawai'i* at the New York Botanical Garden, Bronx, New York. Courtesy, New York Botanical Garden. www.nybg.org

HENRY STREET SETTLEMENT,
New York, NY
**The House on Henry Street:
Settlements, Public Health, and
Social Reform**
Long-term. www.henrystreet.org

INTREPID SEA-AIR-SPACE MUSEUM,
New York, NY
City at Sea: USS *Intrepid*
Site interpretation. www.intrepidmuseum.org

LOWER EAST SIDE TENEMENT
MUSEUM, New York, NY
Shop Life
Long-term. www.tenement.org

LOWER EAST SIDE TENEMENT
MUSEUM, New York, NY
**97 Orchard Street
Tenement Tours**
Long-term. www.tenement.org

LOWER EAST SIDE TENEMENT
MUSEUM, New York, NY
**103 Orchard Street Under One
Roof Tours**
Long-term. www.tenement.org

LOWER EAST SIDE TENEMENT
MUSEUM, New York, NY
103 Orchard Website
Website.
103orchard.tenement.org/stories/103-orchard

MOUNT VERNON HOTEL MUSEUM
& GARDEN, New York, NY
**The Abigail Adams Smith
Museum as the Mount Vernon
Hotel (1826-1833)**
Reinstallation. Organized by the Colonial
Dames of America. www.mvhm.org

MUSEUM OF THE CITY OF NEW
YORK, New York, NY
New York at Its Core
Long-term. mcny.org

RUBIN MUSEUM OF ART,
New York, NY
**Explore Art: Life Through
Himalayan Paintings**
Website. exploreart.rma2.org

WNET.ORG, New York, NY
**Mission US: A Revolutionary
Way to Learn History**
Website. www.mission-us.org

ROCHESTER MUSEUM AND SCIENCE
CENTER, Rochester, NY
Expedition Earth
Reinstallation. www.rmssc.org

PHILIPSBURG MANOR,
Sleepy Hollow, NY
Philipsburg Manor
Site interpretation. Organized by Historic
Hudson Valley. www.hudsonvalley.org

LONG ISLAND MUSEUM OF
AMERICAN ART, HISTORY, AND
CARRIAGES, Stony Brook, NY
Streets of New York
Long-term. www.longislandmuseum.org

LONG ISLAND MUSEUM OF
AMERICAN ART, HISTORY, AND
CARRIAGES, Stony Brook, NY
Driving for Sport and Pleasure
Long-term. www.longislandmuseum.org

LONG ISLAND MUSEUM OF
AMERICAN ART, HISTORY, AND
CARRIAGES, Stony Brook, NY
**Going Places: How Horse-Drawn
Vehicles Shaped American Life**
Long-term. www.longislandmuseum.org

WTF, INC., Harrisburg, PA
ExplorePAHistory.com
Website. www.explorepahistory.com

JOSEPH PRIESTLEY HOME,
Northumberland, PA
**Joseph Priestley: Reason, Order,
and Plainness**
Site interpretation.
www.josephpriestleyhouse.org

PHILADELPHIA MUSEUM OF ART,
Philadelphia, PA
European Collections
Reinstallation. www.philamuseum.org

PHILADELPHIA OUTDOOR
SCULPTURE SITES,
Philadelphia, PA
Museum Without Walls
Walking tour. Organized by the Association
for Public Art. associationforpublicart.org

PLEASE TOUCH MUSEUM®,
Philadelphia, PA
Centennial Exploration
Long-term. www.pleasetouchmuseum.org

UNIVERSITY OF PENNSYLVANIA
MUSEUM OF ARCHAEOLOGY AND
ANTHROPOLOGY,
Philadelphia, PA
**Galleries of the Ancient
Middle East**
Reinstallation. www.penn.museum

CARNEGIE MUSEUM OF NATURAL
HISTORY, Pittsburgh, PA
**Alcoa Foundation Hall of
American Indians**
Long-term. www.carnegiemnh.org

CARNEGIE MUSEUM OF NATURAL
HISTORY, Pittsburgh, PA
Walton Hall of Ancient Egypt
Long-term. www.carnegiemnh.org

SENATOR JOHN HEINZ PITTSBURGH
REGIONAL HISTORY CENTER,
Pittsburgh, PA
**Pittsburgh: A Tradition
of Innovation**
Long-term. www.pghhistory.org

MUSEUM OF NEWPORT HISTORY,
Newport, RI
**Museum of Newport History at
the Brick Market**
Long-term. Organized by the Newport
Historical Society and the Museum of Newport
History. www.newporthistorical.org

MUSEUM OF WORK AND CULTURE,
Woonsocket, RI
**La Survivance: French-Canadians
in Woonsocket, Rhode Island**
Long-term. Organized by the Rhode Island
Historical Society. www.rihs.org

ROKEBY MUSEUM, Ferrisburgh, VT
**Underground Railroad
in Vermont**
Long-term. www.rokeby.org

AMERICAN PRECISION MUSEUM,
Windsor, VT
Shaping America
Long-term. www.americanprecision.org

Orra White Hitchcock (1796–
1863), an artist and illustrator
who created thousands of images
to help her husband study, teach
about, and publish papers on the
fossils and other topics. Courtesy,
Amherst College Archives and
Special Collections. From the
online exhibition *Impressions
from a Lost World*.
www.dinotracksdiscovery.org



MIDWEST

FIELD MUSEUM, Chicago, IL
**Peoples of the Pacific: Traveling
the Pacific and Pacific Spirits**
Long-term. www.fieldmuseum.org

FIELD MUSEUM, Chicago, IL
Africa
Long-term. www.fieldmuseum.org

HULL-HOUSE MUSEUM,
Chicago, IL
**Redefining Democracy:
Jane Addams and the Hull-
House Settlement**
Reinstallation. Organized by the University of
Illinois at Chicago.
www.uic.edu/jaddams/hull

NATIONAL MUSEUM OF MEXICAN
ART, Chicago, IL
**Nuestras Historias: Stories of
Mexican Identity from the
National Museum of Mexican
Art's Permanent Collection**
Reinstallation.
www.nationalmuseumofmexicanart.org

NEWBERRY LIBRARY, Chicago, IL
The Indians of the Midwest
Website. www.newberry.org

WINDOW TO THE WORLD
COMMUNICATIONS, Chicago, IL
Studs Terkel Radio Archive
Website. studsterkel.wfmt.com

CAHOKIA MOUNDS MUSEUM
SOCIETY, Collinsville, IL
Mark of the Mississippians
Website. www.archaeoexplorer.com/media

MUHAMMED ALI CENTER,
Louisville, KY
**America to Zanzibar: Muslim
Cultures Near and Far**
Closes December 30.
Traveling. Organized by the Children's
Museum of Manhattan. cmom.org

ILLINOIS STATE MUSEUM,
Springfield, IL
At Home in the Heartland
Long-term. www.museum.state.il.us

CONNER PRAIRIE, Fishers, IN

1863 Civil War Journey:

Raid on Indiana

Long-term. connerprairie.org

LEVI COFFIN STATE HISTORIC SITE,

Fountain City, IN

Souls Seeking Safety:

Interpreting the Underground Railroad Experience in Indiana

Long-term. Organized by the Indiana State Museum Foundation, Inc.
www.indianamuseum.org

CHILDREN'S MUSEUM OF

INDIANAPOLIS, Indianapolis, IN

The Power of Children: Making a Difference

Long-term.
www.childrensmuseum.org/themuseum/powerofchildren/html/index.html

MISSISSIPPI RIVER MUSEUM AND

AQUARIUM, Dubuque, IA

River Discovery

Long-term. Organized by the Dubuque County Historical Society.
www.mississippirivermuseum.com

THE HENRY FORD MUSEUM,

Dearborn, MI

Your Place in Time:

20th-Century America

Long-term. www.thehenryford.org

THE HENRY FORD MUSEUM,

Dearborn, MI

Made in America: The History of the American Industrial System

Long-term. www.thehenryford.org

THE HENRY FORD MUSEUM,

Dearborn, MI

Heroes of the Sky: Adventures in Early Flight

Long-term. www.thehenryford.org

DETROIT INSTITUTE OF ARTS,

Detroit, MI

Great Art: New Start

Reinstallation. www.dia.org

MICHIGAN STATE UNIVERSITY,

East Lansing, MI

Voices from Detroit: American Black Journal Online

Website. www.matrix.msu.edu/~abj

GRAND RAPIDS PUBLIC MUSEUM,

Grand Rapids, MI

Newcomers: The People of This Place

Long-term. www.grmuseum.org

GRAND RAPIDS PUBLIC MUSEUM,

Grand Rapids, MI

Anishinabek: The People of This Place

Long-term. www.grmuseum.org

INTERNATIONAL WOLF CENTER,

Ely, MN

Wolves and Humans: Coexistence, Competition, and Conflict

Long-term. Organized by the Science Museum of Minnesota. www.wolf.org

MILL CITY MUSEUM,

Minneapolis, MN

Mill City Museum

Long-term. Organized by the Minnesota Historical Society. www.millcitymuseum.org

MINNEAPOLIS INSTITUTE OF ART,

Minneapolis, MN

Material Journeys: African Art in Motion

Reinstallation. Organized by the Minneapolis Society of Fine Arts. www.artsmia.org

MILLE LACS INDIAN MUSEUM,

Onamia, MN

Learn About Our Past: The Story of the Mille Lacs Band of Ojibwe

Long-term. Organized by the Minnesota Historical Society. www.mnhs.org

LANDMARK CENTER, St. Paul, MN

Uncle Sam Worked Here

Long-term. Organized by Minnesota Landmarks. www.landmarkcenter.org

MINNESOTA HISTORICAL SOCIETY,

St. Paul, MN

Open House

Long-term. www.mnhs.org

MINNESOTA HISTORICAL SOCIETY,

St. Paul, MN

The 1968 Project

Closes December 31.

Traveling. www.the1968exhibit.org

MINNESOTA HISTORICAL SOCIETY,

St. Paul, MN

Play the Past: Humanities for the Next Generation

Mobile app. www.mnhs.org

MINNESOTA HISTORY CENTER,

St. Paul, MN

Minnesota's Greatest Generation: The Depression, The War, The Boom

Long-term. Organized by the Minnesota Historical Society.
www.mnhs.org/people/mngg/index.htm

MINNESOTA PUBLIC RADIO,

St. Paul, MN

On Being

Website. www.onbeing.org

UNIVERSITY OF NEBRASKA, BOARD

OF REGENTS, Lincoln, NE

The Journals of the Lewis and Clark Expedition Online Edition

Website. lewisandclarkjournals.unl.edu

CINCINNATI ART MUSEUM,

Cincinnati, OH

The Cincinnati Wing: The Story of Art in the Queen City

Long-term. www.cincinnatiartmuseum.org

DITTRICK MUSEUM OF MEDICAL

HISTORY, CASE WESTERN RESERVE

UNIVERSITY, Cleveland, OH

How Medicine Became Modern

Website. Organized by Case Western Reserve University. artsci.case.edu/Dittrick

KENT STATE UNIVERSITY, VISITORS

CENTER, Kent, OH

Making Meaning of May 4th:

The Kent State Shootings in American History

Long-term. Organized by Kent State University. www.kent.edu

OHIO STATE UNIVERSITY,
Newark, OH
**The Ancient Ohio Trail: A
Media-Enhanced Cultural
Heritage Experience**
Website. www.ancientohiotrail.org

SOUTH DAKOTA STATE HISTORICAL
SOCIETY, CULTURAL HERITAGE
CENTER, Pierre, SD
Proving Up
Long-term.
history.sd.gov/museum/exhibits/gallery.aspx

CHIPPEWA VALLEY MUSEUM,
Eau Claire, WI
**Farm Life: A Century of
Change for Farm Families
and Their Neighbors**
Long-term. www.cvmuseum.com

CHIPPEWA VALLEY MUSEUM,
Eau Claire, WI
**Changing Currents: Reinventing
the Chippewa Valley**
Long-term. www.cvmuseum.com

MILWAUKEE PUBLIC MUSEUM,
Milwaukee, WI
A Tribute to Survival
Long-term. www.mpm.edu

SOUTH

CARL ELLIOTT HOUSE MUSEUM,
Jasper, AL
Carl Elliott House
Long-term. Organized by Beville State
Community College.
[www.bscc.edu/community-resources/
carl-elliott-house-museum](http://www.bscc.edu/community-resources/carl-elliott-house-museum)

FLORIDA MUSEUM OF NATURAL
HISTORY, Gainesville, FL
**South Florida: People
and Environments**
Long-term. Organized by the University of
Florida. www.flmnh.ufl.edu

MISSION SAN LUIS, Tallahassee, FL
**San Luis de Apalachee:
Interpretation of a 17th-Century
Spanish Mission**
Long-term. Organized by the Florida Division
of Historical Resources.
www.missionsanluis.org

ATLANTA HISTORY CENTER,
Atlanta, GA
**Turning Point: The American
Civil War**
Long-term. www.atlhist.org

SOCIETY OF BIBLICAL LITERATURE,
Decatur, GA
**Bible Odyssey: Exploring People,
Places, and Passages**
Website. www.bibleodyssey.com

300-MILE DRIVING TRAIL,
Indianola, MS
**Mississippi Blues Commission
Blues Trail**
Site interpretation. Organized by the
Mississippi Blues Commission.
www.msbluestrail.org

SMITH ROBERTSON MUSEUM &
CULTURAL CENTER, Jackson, MS
**Field to Factory: Afro-American
Migration, 1915-1940**
Long-term.
www.jacksonms.gov/index.aspx?nid=143

LAUREN ROGERS MUSEUM OF ART,
Laurel, MS
**By Native Hands: Woven
Treasures from the Lauren
Rogers Museum of Art**
Reinstallation. www.lрма.org

LEVINE MUSEUM OF THE NEW
SOUTH, Charlotte, NC
**Cotton Fields to Skyscrapers:
Charlotte and the Carolina
Piedmont in the New South**
Long-term. www.museumofthenewsouth.org

MUSEUM OF THE CHEROKEE
INDIAN, Cherokee, NC
**Emissaries of Peace: The 1762
Cherokee/British Delegations**
Long-term. www.cherokeemuseum.org

OLD SALEM, Winston-Salem, NC
**The Moravian Way of Health
and Healing**
Long-term. www.oldsalem.org

HERMITAGE, Hermitage, TN
**The Hermitage, Andrew Jackson,
and a Changing America**
Site interpretation. www.thehermitage.com

EAST TENNESSEE HISTORICAL
SOCIETY, Knoxville, TN
**Voices of the Land: The People
of East Tennessee**
Long-term. www.easttnhistory.org

NATIONAL CIVIL RIGHTS MUSEUM,
Memphis, TN
Lorraine Motel Exhibits
Long-term. www.civilrightsmuseum.org

MONTICELLO, Charlottesville, VA
**Domestic Life and the
Plantation Community at
Jefferson's Monticello**
Site interpretation. Organized by the Thomas
Jefferson Memorial Foundation.
www.monticello.org

MONTICELLO, Charlottesville, VA
**Mulberry Row and the
Landscape of Slavery at
Jefferson's Monticello**
Site interpretation. Organized by the Thomas
Jefferson Memorial Foundation.
www.monticello.org

MONTICELLO VISITOR CENTER,
Charlottesville, VA
To Try All Things
Long-term. Organized by the Thomas Jefferson
Memorial Foundation. www.monticello.org

UNIVERSITY OF VIRGINIA,
Charlottesville, VA
**Slavery and the African
American Experience in Virginia,
1619-1861: A Project of
Encyclopedia Virginia**
Website. www.encyclopediavirginia.org/vr

GEORGE MASON UNIVERSITY,
Fairfax, VA
**Hidden Histories on America's
Front Lawn**
Website. mobile.mallhistory.us

GEORGE MASON UNIVERSITY,
Fairfax, VA
Gulag: Many Days, Many Lives
Website. gulaghhistory.org

R. R. MOTON HIGH SCHOOL,
Farmville, VA
**The Moton School Story:
Children of Courage**
Long-term. Organized by the Robert R. Moton
Museum. www.motonmuseum.org

MAYMONT, Richmond, VA
**In Service and Beyond:
Domestic Work and Life
in a Gilded Age Mansion**
Long-term. www.maymont.org

VALENTINE RICHMOND HISTORY
CENTER, Richmond, VA
**Creating History:
The Valentine Family
and the Valentine Museum**
Long-term. thevalentine.org

VIRGINIA HISTORICAL SOCIETY,
Richmond, VA
**An American Turning Point:
The Civil War in Virginia**
Website. Organized by the Virginia
Sesquicentennial of the American Civil War
Commission.
www.vahistorical.org/civilwar/introduction.htm

COLONIAL WILLIAMSBURG,
Williamsburg, VA
**From Subjects to Citizens:
Williamsburg and
the American Revolution**
Website. www.ouramericanrevolution.org

SOUTHWEST

BISBEE MINING & HISTORICAL
MUSEUM, Bisbee, AZ
**Bisbee: Urban Outpost on
the Frontier**
Long-term. www.bisbeemuseum.org

FORT APACHE HISTORIC PARK,
Fort Apache, AZ
**Transitions in the Apache World:
The Fort Apache Legacy**
Long-term. Organized by the White Mountain
Apache Tribe.
www.wmat.nsn.us/fortapachepark.htm

DESERT BOTANICAL GARDEN,
Phoenix, AZ
**Plants and People of
the Sonoran Desert**
Long-term. www.dbg.org

HEARD MUSEUM, Phoenix, AZ
**Remembering Our Indian
School Days: The Boarding
School Experience**
Long-term. www.heard.org

ARIZONA STATE UNIVERSITY,
Tempe, AZ
**Nature, Culture, and History at
the Grand Canyon**
Website. grandcanyonhistory.clas.asu.edu

ARIZONA STATE MUSEUM,
Tucson, AZ
**Paths of Life: American Indians
of the Southwest**
Long-term. Organized by the University of
Arizona. www.statemuseum.arizona.edu

MAXWELL MUSEUM OF
ANTHROPOLOGY,
Albuquerque, NM
People of the Southwest
Long-term. www.unm.edu/~maxwell

MAXWELL MUSEUM OF
ANTHROPOLOGY,
Albuquerque, NM
Ancestors
Long-term. www.unm.edu/~maxwell

MUSEUM OF INDIAN ARTS AND
CULTURE, Santa Fe, NM
Here, Now, and Always
Long-term. Organized by the Museum of New
Mexico Foundation. www.miaclab.org

EL CAMINO REAL INTERNATIONAL
HERITAGE CENTER, Socorro, NM
**Traveling el Camino Real:
Caminando el Camino Real**
Long-term. Organized by the Museum of
New Mexico. www.nmmonuments.org

A:SHIWI A:WAN MUSEUM AND
HERITAGE CENTER, Zuni, NM
Hawikku: Echoes from Our Past
Long-term. ashiwi-museum.org

OKLAHOMA HISTORY CENTER,
Oklahoma City, OK
We Are Who We Were
Long-term. Organized by the Oklahoma
Historical Society. www.okhistory.org

BOB BULLOCK TEXAS STATE
HISTORY MUSEUM, Austin, TX
**La Belle: The Ship That
Changed History**
Long-term. www.thestoryoftexas.com

WEST

UNIVERSITY OF ALASKA MUSEUM,
Fairbanks, AK
Rose Berry Alaskan Art Gallery
Reinstallation. www.uaf.edu/museum

PRATT MUSEUM, Homer, AK
**Kachemak Bay, Alaska: An
Exploration of People and Place**
Reinstallation. www.prattmuseum.org

FORT ROSS STATE HISTORIC PARK,
Jenner, CA
Rotchev House Museum
Long-term. Organized by the Fort Ross
Interpretive Association.
www.fortrossinterpretive.org

FOWLER MUSEUM OF CULTURAL
HISTORY, UNIVERSITY OF
CALIFORNIA, Los Angeles, CA
**Striking Iron: The Art of
African Blacksmiths**
Closes December 30.
Traveling. Organized by the Fowler Museum
of Cultural History, University of California,
Los Angeles. www.fowler.ucla.edu

FOWLER MUSEUM OF CULTURAL
HISTORY, UNIVERSITY OF
CALIFORNIA, LOS ANGELES,
Los Angeles, CA
**Intersections: World Arts,
Local Lives**
Reinstallation. www.fowler.ucla.edu

UNIVERSITY OF SOUTHERN
CALIFORNIA, Los Angeles, CA
Walden, A Game
Digital game. www.waldengame.com

OAKLAND MUSEUM OF CALIFORNIA, Oakland, CA
Coming to California: The Gallery of California History
Long-term. www.museumca.org

PERALTA HACIENDA HISTORICAL PARK, Oakland, CA
Becoming California, Becoming America
Site interpretation. Organized by the Friends of Peralta Hacienda Historical Park. www.peraltahacienda.org

MUSEUM OF HISTORY AND ART, ONTARIO, Ontario, CA
Road Ways
Long-term. Organized by the Museum of History and Art. www.ontarioca.gov/museum

ASIAN ART MUSEUM OF SAN FRANCISCO, San Francisco, CA
Permanent Collections Galleries
Long-term. www.asianart.org

CHINESE HISTORICAL SOCIETY OF AMERICA, San Francisco, CA
Chinese American: Exclusion/Inclusion
Long-term. Organized by the New-York Historical Society. chsa.org

COIT TOWER, RINCON ANNEX, CITY COLLEGE, MARINE MARITIME MUSEUM, San Francisco, CA
New Deal Murals of San Francisco
Walking tour. Organized by KQED, Inc. www.kqed.org

MOLLY BROWN HOUSE MUSEUM, Denver, CO
Molly Brown: The Biography of a Changing Nation
Long-term. www.mollybrown.org

KONA COFFEE FARM, Captain Cook, HI
Kona Coffee Living History Farm: A Glimpse into the Lifestyle of Kona's Coffee Pioneers
Site interpretation. Organized by the Kona Historical Society. www.konahistorical.org

KONA HISTORIC RANCH, Kealahou, HI
H. N. Greenwell Store Museum: Experience 19th-Century Life in the Hawaiian Kingdom
Site interpretation. Organized by the Kona Historical Society. www.konahistorical.org

C. M. RUSSELL MUSEUM, Great Falls, MT
The Bison: American Icon, Heart of Plains Indian Culture
Long-term. Organized by the Trigg C. M. Russell Foundation. cmrussell.org

HIGH DESERT MUSEUM, Bend, OR
By Hand Through Memory: Native People of the Columbia River Plateau in the Twentieth Century
Long-term. www.highdesertmuseum.org

UTAH MUSEUM OF NATURAL HISTORY, Salt Lake City, UT
Native Voices: People of the Great Basin and Colorado Plateau
Long-term. umnh.utah.edu/home

BURKE MUSEUM OF NATURAL HISTORY AND CULTURE, UNIVERSITY OF WASHINGTON, Seattle, WA
Pacific Voices
Long-term. www.washington.edu/burkemuseum

PLAINS INDIAN MUSEUM, Cody, WY
Plains Indian Museum
Reinstallation. Organized by the Buffalo Bill Center of the West. centerofthewest.org

All events, exhibitions, and programs listed are supported by grants from the National Endowment for the Humanities, Division of Public Programs, 400 7th Street, SW, Washington, DC 20506, (202) 606-8269, PublicPgms@neh.gov. Please contact the host institution for exact dates and times. For more information about NEH and its programs, we invite you to visit our website at www.neh.gov

NATIONAL ENDOWMENT
FOR THE HUMANITIES
WASHINGTON, D.C. 20506
OFFICIAL BUSINESS
PENALTY FOR PRIVATE USE,
\$300

