

## EXHIBITION OPENINGS

### AUGUST

*August 29 to January 12, 2020*

NASHER MUSEUM OF ART, DUKE  
UNIVERSITY, Durham, NC

#### **Art for a New Understanding: Native Voices, 1950s to Now**

**Traveling.** Organized by the Crystal Bridges  
Museum of American Art. [crystalbridges.org](http://crystalbridges.org)

### SEPTEMBER

*September 7*

MISSISSIPPI MUSEUM OF ART,  
Jackson, MS

#### **New Symphony of Time**

**Reinstallation.** [msmuseumart.org](http://msmuseumart.org)

*September 20 to December 22*

SABEEL CENTER, Des Plaines, IL

#### **America to Zanzibar: Muslim Cultures Near and Far**

**Traveling.** Organized by the Children's  
Museum of Manhattan. [cmom.org](http://cmom.org)

*September 21 to February 23, 2020*

AGA KHAN MUSEUM,

Toronto, Canada

#### **Caravans of Gold, Fragments in Time: Art, Culture, and Medieval Trans-Saharan Exchange**

**Traveling.** Organized by  
Northwestern University.  
[www.blockmuseum.northwestern.edu](http://www.blockmuseum.northwestern.edu)

*September 22 to March 1, 2020*

MALTZ MUSEUM OF JEWISH

HERITAGE, THE MUSEUM OF

DIVERSITY AND TOLERANCE,

Beachwood, OH

#### **Leonard Bernstein:**

#### **The Power of Music**

**Traveling.** Organized by the National Museum  
of American Jewish History. [www.nmajh.org](http://www.nmajh.org)

Poppy Northcutt, 1968, the first  
woman in an operational support  
role to work in NASA's Mission  
Control Center with Apollo 8.  
Courtesy ZUMA Press, Inc./Alamy  
Stock Photo. From the  
documentary film *Chasing the  
Moon*, airing on PBS July 8  
(check local listings).



## NEH ON THE ROAD

Division of Public Programs – in cooperation  
with Mid-America Arts Alliance – to extend  
the reach of NEH-funded, large-scale  
exhibitions. Smaller versions of these  
exhibitions, supported by specially designed  
education guides and program materials,  
travel to institutions in underserved areas of  
the country. Please contact the Mid-America  
Arts Alliance if you would like to host any of  
these exhibitions. Additional NEH on the Road  
exhibits are listed under the Ongoing  
Exhibitions and Websites Section.  
[www.nehontheroad.org](http://www.nehontheroad.org).

*August 30 to October 20*

PRICE TOWER ARTS CENTER,

Bartlesville, OK

#### **Frida Kahlo's Garden**

**Traveling.** Based on an exhibition organized  
by the New York Botanical Garden.

*September 1 to October 20*

SAN DIEGO STATE UNIVERSITY,  
San Diego, CA

#### **Bandits & Heroes, Poets & Saints: Popular Art of the Northeast of Brazil**

**Traveling.** Based on an exhibition organized  
by Con/Vida - Popular Arts of the Americas.

*September 1 to October 20*

ELMHURST HISTORY MUSEUM,  
Elmhurst, IL

#### **The Power of Children: Making a Difference**

**Traveling.** Based on an exhibition organized  
by the Children's Museum of Indianapolis.

*September 1 to October 20*

KEWEENAW NATIONAL  
HISTORICAL PARK ADVISORY  
COMMISSION WITH QUINCY MINE  
HOIST ASSOCIATION, Calumet, MI

#### **Jacob A. Riis and His Photographs: Revealing New York's Other Half**

**Traveling.** Based on an exhibition organized  
by the Museum of the City of New York.

September 1 to October 20

EVANSTON HISTORY CENTER,  
Evanston, IL

### **Spirited: Prohibition in America**

**Traveling.** Based on an exhibition organized by the National Constitution Center.

September 1 to October 20

EAST CAROLINA UNIVERSITY,  
JOYNER LIBRARY, Greenville, NC

### **For All The World To See: Visual Culture and the Struggle for Civil Rights**

**Traveling.** Based on an exhibition organized by the University of Maryland, Baltimore County.

## PROGRAMS AND EVENTS

### **Chicago Reflects on the 1919 Race Riots**

Public programs organized by the Newberry Library. [www.newberry.org](http://www.newberry.org)  
July to September

### **Literature and Medicine: Humanities at the Heart of Health Care**

Reading and discussion programs organized by the Maine Humanities Council.  
[mainehumanities.org](http://mainehumanities.org)  
July to September

### **Oregon Humanities Community Conversations 2017-2020**

Discussion programs organized by the Oregon Council for the Humanities.  
[www.oregonhumanities.org](http://www.oregonhumanities.org)  
July to September

### **The American Creed Community Conversations**

Viewing and discussion programs organized by Citizen Film. [www.americancreed.org](http://www.americancreed.org)  
July to August

### **The Mastheads**

Public programs organized by the City of Pittsfield, Massachusetts.  
[www.themastheads.org](http://www.themastheads.org)  
July 1 to July 20

## BROADCASTS

### JULY

July 8 (check local listings)

#### **Chasing the Moon**

Directed, written, and produced by Robert Stone. Mark Samels, executive producer for *American Experience*.  
[www.pbs.org/wgbh/americanexperience/films/chasing-moon](http://www.pbs.org/wgbh/americanexperience/films/chasing-moon)

### AUGUST

August 2 (check local listings)

#### **Worlds of Ursula K. Le Guin**

Directed and produced by Arwen Curry. Michael Kantor, executive producer for *American Masters*.  
[www.thirteen.org/programs/american-masters](http://www.thirteen.org/programs/american-masters)

### SEPTEMBER

September 27 (check local listings)

#### **Adios Amor: The Search for Maria Moreno**

Directed and produced by Laurie Coyle. Sandie Viquez Pedlow, executive producer for *Voces*. A co-presentation of Latino Public Broadcasting and PBS SoCal.  
[www.adiosamorfilm.com](http://www.adiosamorfilm.com)

## ONGOING EXHIBITIONS AND WEBSITES

### EAST

MYSTIC SEAPORT MUSEUM,  
Mystic, CT

#### **Voyaging in the Wake of the Whalers: The 38th Voyage of the Charles W. Morgan**

**Long-term.** [www.mysticseaport.org](http://www.mysticseaport.org)

NATIONAL BUILDING MUSEUM,  
Washington, DC

#### **House and Home**

**Long-term.** [www.nbmi.org](http://www.nbmi.org)

NATIONAL MUSEUM OF AFRICAN  
ART, SMITHSONIAN INSTITUTION,  
Washington, DC

#### **Striking Iron: The Art of African Blacksmiths**

**Closes October 20.**

**Traveling.** Organized by the Fowler Museum of Cultural History, University of California, Los Angeles. [www.fowler.ucla.edu](http://www.fowler.ucla.edu)

#### **SOLDIERS' HOME, Washington, DC President Lincoln's Cottage at the Soldiers' Home**

**Long-term.** Organized by the National Trust for Historic Preservation.  
[www.lincolncottage.org](http://www.lincolncottage.org)

MAINE STATE MUSEUM,  
Augusta, ME

#### **At Home in Maine**

**Long-term.** [mainestatemuseum.org](http://mainestatemuseum.org)

MAINE HISTORICAL SOCIETY,  
Portland, ME

#### **Maine Memory Network**

**Website.** [www.mainememory.net](http://www.mainememory.net)

MAINE HUMANITIES COUNCIL,  
Portland, ME

#### **Local and Legendary: Maine in the Civil War**

**Website.** [civilwar.mainememory.net](http://civilwar.mainememory.net)

PORTLAND MUSEUM OF ART,  
Portland, ME

#### **Fine and Decorative Arts Collections**

**Reinstallation.** [www.portlandmuseum.org](http://www.portlandmuseum.org)

BALTIMORE MUSEUM OF ART,  
Baltimore, MD

#### **The American Wing**

**Reinstallation.** [www.artbma.org](http://www.artbma.org)

BALTIMORE MUSEUM OF ART,  
Baltimore, MD

#### **African Art Collection**

**Reinstallation.** [www.artbma.org](http://www.artbma.org)

BALTIMORE MUSEUM OF INDUSTRY,  
Baltimore, MD

#### **Garment Loft**

**Long-term.** [www.thebmi.org](http://www.thebmi.org)



**Left:** Fulani, Senegal, *Bead*, 19th-20th century, gold filigree. Detroit Institute of Arts, Founders Society purchase, Eleanor Clay Ford Fund for African Art, 77.10. **Center:** Gold jewelry ornaments, Tukolor artist, Mauritania, Late - early 20th century, gold alloy, gift of the Roy and Brigitta Mitchell Collection, photograph by Franko Khoury, National Museum of African Art, Smithsonian Institution. **Right:** Biconical bead, Egypt or Syria, 10th-11th century gold; filigree, granulation, "rope" wire L. 7.2 cm, H. 2.9 cm, The Aga Khan Museum, AKM618. From the exhibition *Caravans of Gold, Fragments in Time: Art, Culture, and Medieval Trans-Saharan Exchange* at the Aga Khan Museum, Toronto, Canada. Courtesy, Northwestern University. [www.blockmuseum.northwestern.edu](http://www.blockmuseum.northwestern.edu)

BALTIMORE MUSEUM OF INDUSTRY,  
Baltimore, MD  
**The Kids' Cannery**  
Long-term. [www.thebmi.org](http://www.thebmi.org)

WALTERS ART MUSEUM,  
Baltimore, MD  
**Medieval Collection**  
Reinstallation. [www.thewalters.org](http://www.thewalters.org)

WALTERS ART MUSEUM,  
Baltimore, MD  
**Egyptian Collection**  
Reinstallation. [www.thewalters.org](http://www.thewalters.org)

ST. MARY'S CITY, VAN SWERINGEN  
SITE, St. Mary's City, MD  
**Van Sweringen  
Archaeological Site**  
Site interpretation. Organized by the Historic  
St. Mary's City Commission.  
[www.stmaryscity.org](http://www.stmaryscity.org)

BOSTON CHILDREN'S MUSEUM,  
Boston, MA  
**Boston Black: A City Connects**  
Long-term. [www.bostonkids.org](http://www.bostonkids.org)

COMMONWEALTH MUSEUM,  
Boston, MA  
**Our Common Wealth:  
The Massachusetts  
Experiment in Democracy**  
Long-term. Organized by the Friends of the  
Commonwealth Museum.  
[www.sec.state.ma.us](http://www.sec.state.ma.us)

USS CONSTITUTION MUSEUM,  
Boston, MA  
**All Hands on Deck: A Sailor's  
Life in 1812**  
Long-term. [www.usconstitutionmuseum.org](http://www.usconstitutionmuseum.org)

HARVARD UNIVERSITY,  
Cambridge, MA  
**DoHistory**  
Website. [www.dohistory.org](http://www.dohistory.org)

MOUNT AUBURN CEMETERY,  
Cambridge, MA  
**Mount Auburn Cemetery:  
A New American Landscape**  
Long-term. [www.mountauburn.org](http://www.mountauburn.org)

CONCORD MUSEUM, Concord, MA  
**"Why Concord?" The History of  
Concord, Massachusetts**  
Long-term. [www.concordmuseum.org](http://www.concordmuseum.org)

POCUMTUCK VALLEY MEMORIAL  
ASSOCIATION, Deerfield, MA  
**Raid on Deerfield: The Many  
Stories of 1704**  
Website. [1704.deerfield.history.museum](http://1704.deerfield.history.museum)

POCUMTUCK VALLEY MEMORIAL  
ASSOCIATION, Deerfield, MA  
**Impressions from a Lost World**  
Website. [www.dinotracksdiscovery.org](http://www.dinotracksdiscovery.org)

MARTHA'S VINEYARD MUSEUM,  
Edgartown, MA  
**Laura Jernegan: Girl on  
a Whaleship**  
Website. [www.girlonawhaleship.org](http://www.girlonawhaleship.org)

MARTHA'S VINEYARD MUSEUM,  
Edgartown, MA  
**Enchanted Isle: The Story of  
Martha's Vineyard**  
Long-term.  
[www.mvmuseum.org/permanent.php#enchantedisle](http://www.mvmuseum.org/permanent.php#enchantedisle)

HOLYOKE HERITAGE STATE PARK,  
CHILDREN'S MUSEUM AT  
HOLYOKE, WISTARIAHURST  
MUSEUM, Holyoke, MA  
**Creating Holyoke:  
Immigrants' and Migrants'  
Search for Community**  
Site interpretation. Organized by the  
Wistariahurst Museum/City of Holyoke.  
[www.creatingholyokey.org](http://www.creatingholyokey.org)

ARNOLD ARBORETUM OF  
HARVARD UNIVERSITY,  
Jamaica Plain, MA  
**Science in the Pleasure  
Ground: An Exploration of  
Arboretum History**  
Long-term. [www.arboretum.harvard.edu](http://www.arboretum.harvard.edu)

NEW BEDFORD WHALING  
MUSEUM, New Bedford, MA  
**From Pursuit to Preservation:  
The Global Story of Whales  
and Whaling**  
Long-term.  
[www.whalingmuseum.org/explore/exhibitions/current/pursuit-to-preservation](http://www.whalingmuseum.org/explore/exhibitions/current/pursuit-to-preservation)

HANCOCK SHAKER VILLAGE,  
Pittsfield, MA  
**Audio Tour**  
Site interpretation.  
[www.hancockshakervillage.org](http://www.hancockshakervillage.org)

PLIMOTH PLANTATION,  
Plymouth, MA  
**Along the Shores of Change**  
Site interpretation. [www.plimoth.org](http://www.plimoth.org)

SPRINGFIELD TECHNICAL  
COMMUNITY COLLEGE,  
Springfield, MA  
**Shays' Rebellion and the  
Making of a Nation: From  
Revolution to Constitution**  
Website. [www.shaysrebellion.stcc.edu](http://www.shaysrebellion.stcc.edu)

OLD STURBRIDGE VILLAGE,  
Sturbridge, MA  
**Farms, Families, and Change:  
New England Farming and  
Rural Life**  
Site interpretation. [www.osv.org](http://www.osv.org)

STRAWBERRY BANKE,  
Portsmouth, NH  
**Becoming Americans: The  
Shapiro Story, 1898-1928**  
Long-term. [www.strawberrybanke.org](http://www.strawberrybanke.org)

STRAWBERRY BANKE,  
Portsmouth, NH  
**Crossroads of a Neighborhood  
in Change: The Corner Grocery  
Store at Strawberry Banke  
During WWII**  
Long-term. [www.strawberrybanke.org](http://www.strawberrybanke.org)

NEWARK MUSEUM, Newark, NJ  
**Picturing America**  
Reinstallation. [www.newarkmuseum.org](http://www.newarkmuseum.org)

NEW YORK STATE MUSEUM,  
Albany, NY  
**A Mohawk-Iroquois Village**  
Long-term. [www.nysm.nysed.gov](http://www.nysm.nysed.gov)

BROOKLYN CHILDREN'S MUSEUM,  
Brooklyn, NY  
**World Brooklyn**  
Long-term. [www.brooklynkids.org](http://www.brooklynkids.org)

BROOKLYN HISTORICAL SOCIETY,  
Brooklyn, NY  
**Taking Care of Brooklyn: Stories  
of Sickness and Health**  
Long-term. [www.brooklynhistory.org](http://www.brooklynhistory.org)

BROOKLYN HISTORICAL SOCIETY,  
Brooklyn, NY  
**Crossing Borders, Bridging  
Generations: A Study of Mixed-  
Heritage Families in Brooklyn**  
Website. [cbbg.brooklynhistory.org/about](http://cbbg.brooklynhistory.org/about)

BROOKLYN HISTORICAL SOCIETY,  
Brooklyn, NY  
**Waterfront Exhibition:  
Water Log and Visitor Vistas**  
Website. [www.brooklynhistory.org](http://www.brooklynhistory.org)

BROOKLYN HISTORICAL SOCIETY,  
WEEKSVILLE HERITAGE CENTER,  
IRONDALE CENTER, Brooklyn, NY  
**In Pursuit of Freedom**  
Long-term. Organized by the Brooklyn  
Historical Society. [www.brooklynhistory.org](http://www.brooklynhistory.org)

BROOKLYN NAVY YARD,  
Brooklyn, NY  
**Brooklyn Navy Yard:  
Past, Present, and Future**  
Long-term. [www.bldg92.com](http://www.bldg92.com)

EMPIRE STORES MUSEUM,  
Brooklyn, NY  
**Waterfront at Brooklyn  
Historical Society DUMBO**  
Long-term. Organized by the Brooklyn  
Historical Society. [www.brooklynhistory.org](http://www.brooklynhistory.org)

THOMAS COLE NATIONAL  
HISTORIC SITE, Catskill, NY  
**Hudson River School Art Trail**  
Website. [www.hudsonriverschool.org](http://www.hudsonriverschool.org)

THOMAS COLE NATIONAL  
HISTORIC SITE, Catskill, NY  
**The Home and Studio of Thomas  
Cole, Founder of the Hudson  
River School of Art**  
Long-term. [www.thomascole.org](http://www.thomascole.org)

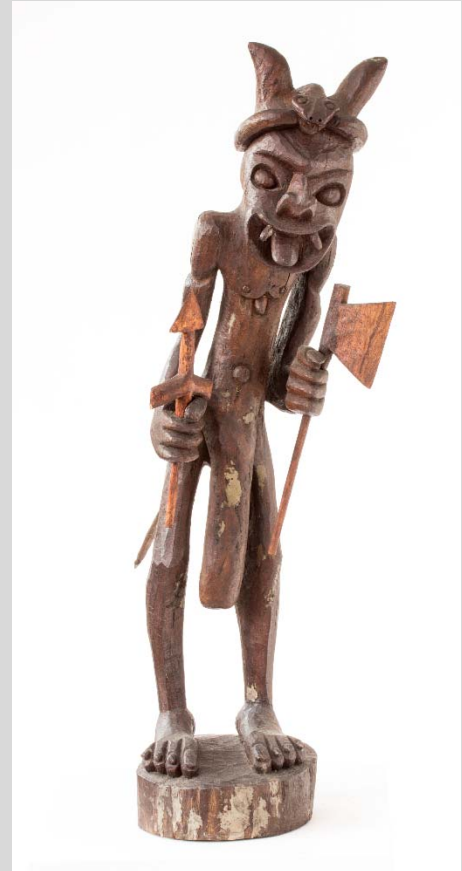
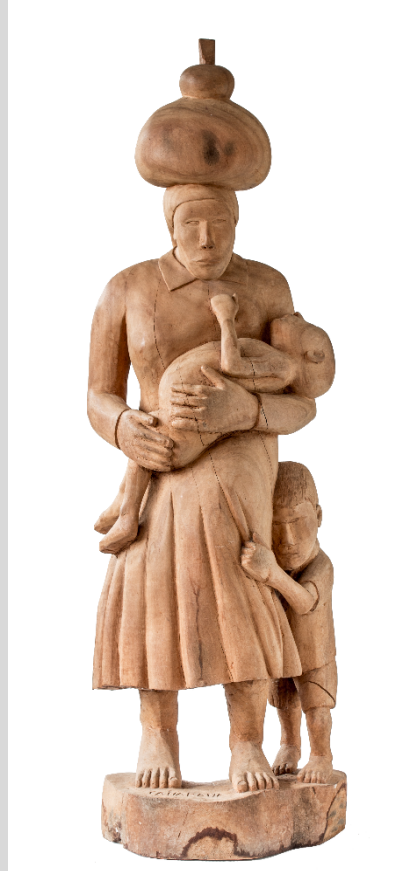
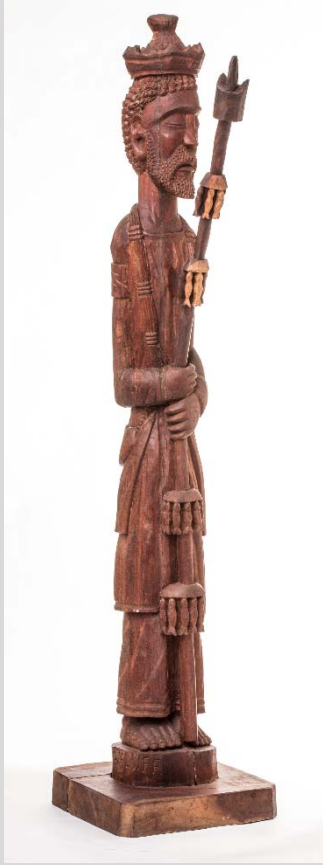
THOMAS COLE NATIONAL  
HISTORIC SITE, Catskill, NY  
**A Guest in the Home**  
Long-term. [www.thomascole.org](http://www.thomascole.org)

SQUIRE FAMILY FOUNDATION,  
East Northport, NY  
**Wireless Philosophy**  
Website. [www.wi-phi.com](http://www.wi-phi.com)

CENTER FOR NEW AMERICAN  
MEDIA, INC., New York, NY  
**Past/Present**  
Website. [www.pastpresent.org](http://www.pastpresent.org)

CITY LORE, New York, NY  
**Poetic Voices of the  
Muslim World**  
Website. [www.pvmw.org](http://www.pvmw.org)





**Left:** *Louco Filho, Oxala*, the Orixá Oxala, wood carving, 80", 1995. **Center:** *Canarana, Woman of the Sertão*, wood carving, 49", 2003. **Right:** *Jorge Santos, Exu*, the Messenger Spirit, wood carving, 41", 1993. From the traveling exhibition *Bandits & Heroes, Poets & Saints: Popular Art of the Northeast of Brazil* at San Diego University. Courtesy, Con/Vida. [www.nehontheroad.org](http://www.nehontheroad.org)

MUSEUM AT ELDRIDGE STREET,  
New York, NY

**Historic Building Tours**

Site interpretation. [www.eldridgestreet.org](http://www.eldridgestreet.org)

ELLIS ISLAND, New York, NY

**Future in the Balance:  
Immigration, Public Health, and  
the Ellis Island Hospitals**

Long-term. Organized by Save Ellis Island, Inc.  
[www.saveellisland.org](http://www.saveellisland.org)

HENRY STREET SETTLEMENT,  
New York, NY

**The House on Henry Street:  
Settlements, Public Health, and  
Social Reform**

Long-term. [www.henrystreet.org](http://www.henrystreet.org)

INTREPID SEA-AIR-SPACE MUSEUM,  
New York, NY

**City at Sea: USS *Intrepid***

Site interpretation. [www.intrepidmuseum.org](http://www.intrepidmuseum.org)

LOWER EAST SIDE TENEMENT  
MUSEUM, New York, NY

**103 Orchard Website**

Website.  
[103orchard.tenement.org/stories/103-orchard](http://103orchard.tenement.org/stories/103-orchard)

LOWER EAST SIDE TENEMENT  
MUSEUM, New York, NY

**97 Orchard Street  
Tenement Tours**

Long-term. [www.tenement.org](http://www.tenement.org)

LOWER EAST SIDE TENEMENT  
MUSEUM, New York, NY

**103 Orchard Street, Under One  
Roof Tours**

Long-term. [www.tenement.org](http://www.tenement.org)

LOWER EAST SIDE TENEMENT  
MUSEUM, New York, NY

**Shop Life**

Long-term. [www.tenement.org](http://www.tenement.org)

MOUNT VERNON HOTEL MUSEUM  
& GARDEN, New York, NY  
**The Abigail Adams Smith  
Museum as the Mount Vernon  
Hotel (1826–1833)**  
Reinstallation. Organized by the Colonial  
Dames of America. [www.mvhm.org](http://www.mvhm.org)

MUSEUM OF THE CITY OF NEW  
YORK, New York, NY  
**New York at Its Core**  
Long-term. [mcny.org](http://mcny.org)

RUBIN MUSEUM OF ART,  
New York, NY  
**Explore Art: Life Through  
Himalayan Paintings**  
Website. [exploreart.rma2.org](http://exploreart.rma2.org)

WNET.ORG, New York, NY  
**Mission US: A Revolutionary  
Way to Learn History**  
Website. [www.mission-us.org](http://www.mission-us.org)

ROCHESTER MUSEUM AND SCIENCE  
CENTER, Rochester, NY  
**Expedition Earth**  
Reinstallation. [www.rmssc.org](http://www.rmssc.org)

PHILIPSBURG MANOR,  
Sleepy Hollow, NY  
**People as Property: Stories of  
Northern Colonial Enslavement**  
Website. Organized by Historic Hudson  
Valley. [peoplenotproperty.hudsonvalley.org](http://peoplenotproperty.hudsonvalley.org)

PHILIPSBURG MANOR,  
Sleepy Hollow, NY  
**Philipsburg Manor**  
Site interpretation. Organized by Historic  
Hudson Valley. [www.hudsonvalley.org](http://www.hudsonvalley.org)

ALICE AUSTEN HOUSE,  
Staten Island, NY  
**New Eyes on Alice Austen**  
Site interpretation. [aliceausten.org](http://aliceausten.org)

LONG ISLAND MUSEUM OF  
AMERICAN ART, HISTORY, AND  
CARRIAGES, Stony Brook, NY  
**Going Places: How Horse-Drawn  
Vehicles Shaped American Life**  
Long-term. [www.longislandmuseum.org](http://www.longislandmuseum.org)

LONG ISLAND MUSEUM OF  
AMERICAN ART, HISTORY, AND  
CARRIAGES, Stony Brook, NY  
**Streets of New York**  
Long-term. [www.longislandmuseum.org](http://www.longislandmuseum.org)

LONG ISLAND MUSEUM OF  
AMERICAN ART, HISTORY, AND  
CARRIAGES, Stony Brook, NY  
**Driving for Sport and Pleasure**  
Long-term. [www.longislandmuseum.org](http://www.longislandmuseum.org)

WTF, INC., Harrisburg, PA  
**ExplorePAHistory.com**  
Website. [www.explorepahistory.com](http://www.explorepahistory.com)

JOSEPH PRIESTLEY HOME,  
Northumberland, PA  
**Joseph Priestley: Reason, Order,  
and Plainness**  
Site interpretation.  
[www.josephpriestleyhouse.org](http://www.josephpriestleyhouse.org)

PHILADELPHIA MUSEUM OF ART,  
Philadelphia, PA  
**European Collections**  
Reinstallation. [www.philamuseum.org](http://www.philamuseum.org)

PHILADELPHIA OUTDOOR  
SCULPTURE SITES,  
Philadelphia, PA  
**Museum Without Walls**  
Walking tour. Organized by the Association  
for Public Art. [associationforpublicart.org](http://associationforpublicart.org)

PLEASE TOUCH MUSEUM®,  
Philadelphia, PA  
**Centennial Exploration**  
Long-term. [www.pleasetouchmuseum.org](http://www.pleasetouchmuseum.org)

UNIVERSITY OF PENNSYLVANIA  
MUSEUM OF ARCHAEOLOGY  
AND ANTHROPOLOGY,  
Philadelphia, PA  
**Galleries of the Ancient  
Middle East**  
Reinstallation. [www.penn.museum](http://www.penn.museum)

CARNEGIE MUSEUM OF NATURAL  
HISTORY, Pittsburgh, PA  
**Walton Hall of Ancient Egypt**  
Long-term. [www.carnegiemnh.org](http://www.carnegiemnh.org)

CARNEGIE MUSEUM OF NATURAL  
HISTORY, Pittsburgh, PA  
**Alcoa Foundation Hall of  
American Indians**  
Long-term. [www.carnegiemnh.org](http://www.carnegiemnh.org)

SENATOR JOHN HEINZ PITTSBURGH  
REGIONAL HISTORY CENTER,  
Pittsburgh, PA  
**Pittsburgh: A Tradition  
of Innovation**  
Long-term. [www.pghhistory.org](http://www.pghhistory.org)

MUSEUM OF NEWPORT HISTORY,  
Newport, RI  
**Museum of Newport History at  
the Brick Market**  
Long-term. Organized by the Newport  
Historical Society and the Museum of Newport  
History. [www.newporthistorical.org](http://www.newporthistorical.org)

MUSEUM OF WORK AND CULTURE,  
Woonsocket, RI  
**La Survivance: French-Canadians  
in Woonsocket, Rhode Island**  
Long-term. Organized by the Rhode Island  
Historical Society. [www.rihs.org](http://www.rihs.org)

ROKEBY MUSEUM, Ferrisburgh, VT  
**Underground Railroad  
in Vermont**  
Long-term. [www.rokeby.org](http://www.rokeby.org)

AMERICAN PRECISION MUSEUM,  
Windsor, VT  
**Shaping America**  
Long-term. [www.americanprecision.org](http://www.americanprecision.org)

**MIDWEST**  
CHICAGO HISTORY MUSEUM,  
Chicago, IL  
**Modern by Design:  
Chicago Streamlines America**  
Closes March 1, 2020.  
Temporary. Organized by the Chicago  
Historical Society. [www.chicagohistory.org](http://www.chicagohistory.org)

FIELD MUSEUM, Chicago, IL  
**Peoples of the Pacific: Traveling  
the Pacific and Pacific Spirits**  
Long-term. [www.fieldmuseum.org](http://www.fieldmuseum.org)

FIELD MUSEUM, Chicago, IL  
**Africa**  
Long-term. [www.fieldmuseum.org](http://www.fieldmuseum.org)

HULL-HOUSE MUSEUM,  
Chicago, IL  
**Redefining Democracy: Jane Addams and the Hull-House Settlement**  
**Reinstallation.** Organized by the University of Illinois at Chicago.  
[www.hullhousemuseum.org](http://www.hullhousemuseum.org)

NATIONAL MUSEUM OF MEXICAN ART, Chicago, IL  
**Nuestras Historias: Stories of Mexican Identity from the National Museum of Mexican Art's Permanent Collection**  
**Reinstallation.**  
[www.nationalmuseumofmexicanart.org](http://www.nationalmuseumofmexicanart.org)

NEWBERRY LIBRARY, Chicago, IL  
**The Indians of the Midwest**  
**Website.** [www.newberry.org](http://www.newberry.org)

WINDOW TO THE WORLD COMMUNICATIONS, Chicago, IL  
**Studs Terkel Radio Archive**  
**Website.** [studsterkel.wfmt.com](http://studsterkel.wfmt.com)

CAHOKIA MOUNDS MUSEUM SOCIETY, Collinsville, IL  
**Mark of the Mississippians**  
**Website.** [www.archaeoexplorer.com/media](http://www.archaeoexplorer.com/media)

ILLINOIS STATE MUSEUM, Springfield, IL  
**At Home in the Heartland**  
**Long-term.** [www.museum.state.il.us](http://www.museum.state.il.us)

CONNER PRAIRIE, Fishers, IN  
**1863 Civil War Journey: Raid on Indiana**  
**Long-term.** [connerprairie.org](http://connerprairie.org)

LEVI COFFIN STATE HISTORIC SITE, Fountain City, IN  
**Souls Seeking Safety: Interpreting the Underground Railroad Experience in Indiana**  
**Long-term.** Organized by the Indiana State Museum Foundation, Inc.  
[www.indianamuseum.org](http://www.indianamuseum.org)

CHILDREN'S MUSEUM OF INDIANAPOLIS, Indianapolis, IN  
**The Power of Children: Making a Difference**  
**Long-term.**  
[www.childrensmuseum.org/themuseum/powerofchildren/html/index.html](http://www.childrensmuseum.org/themuseum/powerofchildren/html/index.html)

MISSISSIPPI RIVER MUSEUM AND AQUARIUM, Dubuque, IA  
**River Discovery**  
**Long-term.** Organized by the Dubuque County Historical Society.  
[www.mississippirivermuseum.com](http://www.mississippirivermuseum.com)

THE HENRY FORD MUSEUM, Dearborn, MI  
**Heroes of the Sky: Adventures in Early Flight**  
**Long-term.** [www.thehenryford.org](http://www.thehenryford.org)

THE HENRY FORD MUSEUM, Dearborn, MI  
**Made in America: The History of the American Industrial System**  
**Long-term.** [www.thehenryford.org](http://www.thehenryford.org)

THE HENRY FORD MUSEUM, Dearborn, MI  
**Your Place in Time: 20th-Century America**  
**Long-term.** [www.thehenryford.org](http://www.thehenryford.org)

DETROIT INSTITUTE OF ARTS, Detroit, MI  
**Great Art: New Start**  
**Reinstallation.** [www.dia.org](http://www.dia.org)

MICHIGAN STATE UNIVERSITY, East Lansing, MI  
**Voices from Detroit: American Black Journal Online**  
**Website.** [www.matrix.msu.edu/~abj](http://www.matrix.msu.edu/~abj)

GRAND RAPIDS PUBLIC MUSEUM, Grand Rapids, MI  
**Anishinabek: The People of This Place**  
**Long-term.** [www.grmuseum.org](http://www.grmuseum.org)

GRAND RAPIDS PUBLIC MUSEUM, Grand Rapids, MI  
**Newcomers: The People of This Place**  
**Long-term.** [www.grmuseum.org](http://www.grmuseum.org)

INTERNATIONAL WOLF CENTER, Ely, MN  
**Wolves and Humans: Coexistence, Competition, and Conflict**  
**Long-term.** Organized by the Science Museum of Minnesota. [www.wolf.org](http://www.wolf.org)

MILL CITY MUSEUM, Minneapolis, MN  
**Mill City Museum**  
**Long-term.** Organized by the Minnesota Historical Society. [www.millcitymuseum.org](http://www.millcitymuseum.org)

MINNEAPOLIS INSTITUTE OF ART, Minneapolis, MN  
**Material Journeys: African Art in Motion**  
**Reinstallation.** Organized by the Minneapolis Society of Fine Arts. [www.artsmia.org](http://www.artsmia.org)

MILLE LACS INDIAN MUSEUM, Onamia, MN  
**Learn About Our Past: The Story of the Mille Lacs Band of Ojibwe**  
**Long-term.** Organized by the Minnesota Historical Society. [www.mnhs.org](http://www.mnhs.org)

LANDMARK CENTER, St. Paul, MN  
**Uncle Sam Worked Here**  
**Long-term.** Organized by Minnesota Landmarks. [www.landmarkcenter.org](http://www.landmarkcenter.org)

MINNESOTA HISTORICAL SOCIETY, St. Paul, MN  
**Open House**  
**Long-term.** [www.mnhs.org](http://www.mnhs.org)

MINNESOTA HISTORICAL SOCIETY, St. Paul, MN  
**Play the Past: Humanities for the Next Generation**  
**Mobile app.** [www.mnhs.org](http://www.mnhs.org)

MINNESOTA HISTORY CENTER, St. Paul, MN  
**Minnesota's Greatest Generation: The Depression, The War, The Boom**  
**Long-term.** Organized by the Minnesota Historical Society.  
[www.mnhs.org/people/mngg/index.htm](http://www.mnhs.org/people/mngg/index.htm)

MINNESOTA PUBLIC RADIO,  
St. Paul, MN  
**On Being**  
Website. [www.onbeing.org](http://www.onbeing.org)

UNIVERSITY OF NEBRASKA, BOARD  
OF REGENTS, Lincoln, NE  
**The Journals of the Lewis and  
Clark Expedition Online Edition**  
Website. [lewisandclarkjournals.unl.edu](http://lewisandclarkjournals.unl.edu)

CINCINNATI ART MUSEUM,  
Cincinnati, OH  
**The Cincinnati Wing: The Story  
of Art in the Queen City**  
Long-term. [www.cincinnatiartmuseum.org](http://www.cincinnatiartmuseum.org)

DITTRICK MUSEUM OF MEDICAL  
HISTORY, CASE WESTERN RESERVE  
UNIVERSITY, Cleveland, OH  
**How Medicine Became Modern**  
Website. [artsci.case.edu/Dittrick](http://artsci.case.edu/Dittrick)

KENT STATE UNIVERSITY,  
Kent, OH  
**Making Meaning of May 4th:  
The Kent State Shootings in  
American History**  
Long-term. [www.kent.edu](http://www.kent.edu)

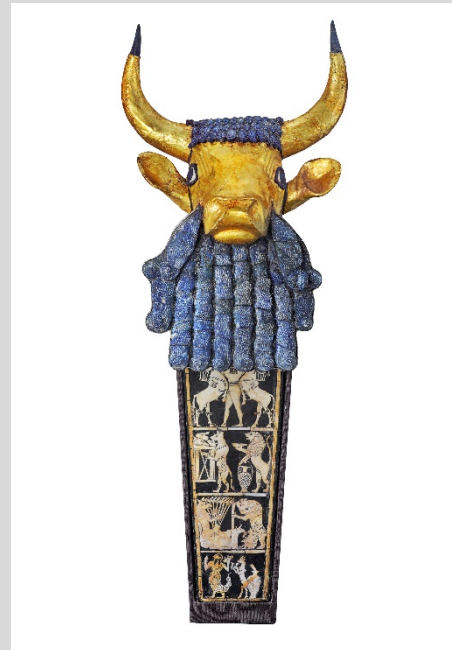
OHIO STATE UNIVERSITY,  
Newark, OH  
**The Ancient Ohio Trail:  
A Media-Enhanced Cultural  
Heritage Experience**  
Website. [www.ancientohiotrail.org](http://www.ancientohiotrail.org)

SOUTH DAKOTA STATE HISTORICAL  
SOCIETY, CULTURAL HERITAGE  
CENTER, Pierre, SD  
**Proving Up**  
Long-term.  
[history.sd.gov/museum/exhibits/gallery.aspx](http://history.sd.gov/museum/exhibits/gallery.aspx)

CHIPPEWA VALLEY MUSEUM,  
Eau Claire, WI  
**Changing Currents: Reinventing  
the Chippewa Valley**  
Long-term. [www.cvmuseum.com](http://www.cvmuseum.com)

CHIPPEWA VALLEY MUSEUM,  
Eau Claire, WI  
**Farm Life: A Century of  
Change for Farm Families  
and Their Neighbors**  
Long-term. [www.cvmuseum.com](http://www.cvmuseum.com)

MILWAUKEE PUBLIC MUSEUM,  
Milwaukee, WI  
**A Tribute to Survival**  
Long-term. [www.mpm.edu](http://www.mpm.edu)



**Left:** *Ram Caught in a Thicket* statuette, one of a pair found in the Great Death Pit in Ur, Iraq, ca. 2450 BCE. Gold, lapis lazuli, copper, shell, red limestone, and bitumen. Photo: Penn Museum. **Right:** Bull-headed Lyre. Gold, silver, lapis lazuli, shell, bitumen and wood, ca 2450 BCE at Ur, Object No. B17694A. Courtesy, Penn Museum and Doring Kindersley. From the *Galleries of the Ancient Middle East* at the University of Pennsylvania Museum of Archaeology and Anthropology, Philadelphia, Pennsylvania. [www.penn.museum](http://www.penn.museum).



## **SOUTH**

CARL ELLIOTT HOUSE MUSEUM,  
Jasper, AL

### **Carl Elliott House**

**Long-term.** Organized by Beville State  
Community College.

[www.bscc.edu/community-resources/carl-elliott-house-museum](http://www.bscc.edu/community-resources/carl-elliott-house-museum)

FLORIDA MUSEUM OF NATURAL  
HISTORY, Gainesville, FL

### **South Florida:**

#### **People and Environments**

**Long-term.** Organized by the University of  
Florida. [www.flmnh.ufl.edu](http://www.flmnh.ufl.edu)

MISSION SAN LUIS, Tallahassee, FL  
**San Luis de Apalachee:**

#### **Interpretation of a 17th-Century Spanish Mission**

**Long-term.** Organized by the Florida Division  
of Historical Resources.

[www.missionsanluis.org](http://www.missionsanluis.org)

ATLANTA HISTORY CENTER,  
Atlanta, GA

#### **Turning Point: The American Civil War**

**Long-term.** [www.atlhist.org](http://www.atlhist.org)

SOCIETY OF BIBLICAL LITERATURE,  
Decatur, GA

#### **Bible Odyssey: Exploring People, Places, and Passages**

**Website.** [www.bibleodyssey.com](http://www.bibleodyssey.com)

300-MILE DRIVING TRAIL,  
Indianola, MS

#### **Mississippi Blues Commission Blues Trail**

**Site interpretation.** Organized by the  
Mississippi Blues Commission.

[www.msbluestrail.org](http://www.msbluestrail.org)

SMITH ROBERTSON MUSEUM &  
CULTURAL CENTER, Jackson, MS

#### **Field to Factory: Afro-American Migration, 1915-1940**

**Long-term.**

[www.jacksonms.gov/index.aspx?nid=143](http://www.jacksonms.gov/index.aspx?nid=143)

LAUREN ROGERS MUSEUM OF ART,  
Laurel, MS

#### **By Native Hands: Woven Treasures from the Lauren**

#### **Rogers Museum of Art**

**Reinstallation.** [www.lirma.org](http://www.lirma.org)

LEVINE MUSEUM OF THE NEW  
SOUTH, Charlotte, NC

#### **Cotton Fields to Skyscrapers: Charlotte and the Carolina Piedmont in the New South**

**Long-term.** [www.museumofthenewsouth.org](http://www.museumofthenewsouth.org)

MUSEUM OF THE CHEROKEE  
INDIAN, Cherokee, NC

#### **Emissaries of Peace: The 1762 Cherokee/British Delegations**

**Long-term.** [www.cherokeemuseum.org](http://www.cherokeemuseum.org)

OLD SALEM, Winston-Salem, NC  
**The Moravian Way of Health**

#### **and Healing**

**Long-term.** [www.oldsalem.org](http://www.oldsalem.org)

HERMITAGE, Hermitage, TN

#### **The Hermitage, Andrew Jackson, and a Changing America**

**Site interpretation.** [www.thehermitage.com](http://www.thehermitage.com)

EAST TENNESSEE HISTORICAL  
SOCIETY, Knoxville, TN

#### **Voices of the Land: The People of East Tennessee**

**Long-term.** [www.easttnhistory.org](http://www.easttnhistory.org)

NATIONAL CIVIL RIGHTS MUSEUM,  
Memphis, TN

#### **Lorraine Motel Exhibits**

**Long-term.** [www.civilrightsmuseum.org](http://www.civilrightsmuseum.org)

MONTICELLO, Charlottesville, VA  
**Mulberry Row and the**

#### **Landscape of Slavery at Jefferson's Monticello**

**Site interpretation.** Organized by the Thomas  
Jefferson Memorial Foundation.  
[www.monticello.org](http://www.monticello.org)

MONTICELLO, Charlottesville, VA  
**Domestic Life and the Plantation  
Community at Jefferson's  
Monticello**

**Site interpretation.** Organized by the Thomas  
Jefferson Memorial Foundation.  
[www.monticello.org](http://www.monticello.org)

MONTICELLO VISITOR CENTER,  
Charlottesville, VA

#### **To Try All Things**

**Long-term.** Organized by the Thomas Jefferson  
Memorial Foundation. [www.monticello.org](http://www.monticello.org)

UNIVERSITY OF VIRGINIA,  
Charlottesville, VA

#### **Slavery and the African American Experience in Virginia, 1619-1861: A Project of Encyclopedia Virginia**

**Website.** [www.encyclopediavirginia.org/vr](http://www.encyclopediavirginia.org/vr)

GEORGE MASON UNIVERSITY,  
Fairfax, VA

#### **Gulag: Many Days, Many Lives**

**Website.** [gulaghhistory.org](http://gulaghhistory.org)

GEORGE MASON UNIVERSITY,  
Fairfax, VA

#### **Hidden Histories on America's Front Lawn**

**Website.** [mobile.mallhistory.us](http://mobile.mallhistory.us)

R. R. MOTON HIGH SCHOOL,  
Farmville, VA

#### **The Moton School Story: Children of Courage**

**Long-term.** Organized by the Robert R. Moton  
Museum. [www.motonmuseum.org](http://www.motonmuseum.org)

MAYMONT, Richmond, VA  
**In Service and Beyond:**

#### **Domestic Work and Life in a Gilded Age Mansion**

**Long-term.** [www.maymont.org](http://www.maymont.org)

VALENTINE RICHMOND HISTORY  
CENTER, Richmond, VA

#### **Creating History:**

#### **The Valentine Family and the Valentine Museum**

**Long-term.** [thevalentine.org](http://thevalentine.org)

VIRGINIA HISTORICAL SOCIETY,  
Richmond, VA  
**An American Turning Point:  
The Civil War in Virginia**  
Website. Organized by the Virginia  
Sesquicentennial of the American Civil War  
Commission. [www.vahistorical.org/civilwar/  
introduction.htm](http://www.vahistorical.org/civilwar/introduction.htm)

COLONIAL WILLIAMSBURG,  
Williamsburg, VA  
**From Subjects to Citizens:  
Williamsburg and the  
American Revolution**  
Website. [www.ouramericanrevolution.org](http://www.ouramericanrevolution.org)

**SOUTHWEST**  
BISBEE MINING & HISTORICAL  
MUSEUM, Bisbee, AZ  
**Bisbee: Urban Outpost on  
the Frontier**  
Long-term. [www.bisbeemuseum.org](http://www.bisbeemuseum.org)

FORT APACHE HISTORIC PARK,  
Fort Apache, AZ  
**Transitions in the Apache World:  
The Fort Apache Legacy**  
Long-term. Organized by the White Mountain  
Apache Tribe.  
[www.wmat.nsn.us/fortapachepark.htm](http://www.wmat.nsn.us/fortapachepark.htm)

DESERT BOTANICAL GARDEN,  
Phoenix, AZ  
**Plants and People of the  
Sonoran Desert**  
Long-term. [www.dbg.org](http://www.dbg.org)

HEARD MUSEUM, Phoenix, AZ  
**Away from Home: American  
Indian Boarding School Stories**  
Long-term. [heard.org](http://heard.org)

ARIZONA STATE UNIVERSITY,  
Tempe, AZ  
**Nature, Culture, and History  
at the Grand Canyon**  
Website. [grandcanyonhistory.clas.asu.edu](http://grandcanyonhistory.clas.asu.edu)

ARIZONA STATE MUSEUM,  
Tucson, AZ  
**Paths of Life: American Indians  
of the Southwest**  
Long-term. Organized by the University of  
Arizona. [www.statemuseum.arizona.edu](http://www.statemuseum.arizona.edu)

MAXWELL MUSEUM  
OF ANTHROPOLOGY,  
Albuquerque, NM  
**People of the Southwest**  
Long-term. [www.unm.edu/~maxwell](http://www.unm.edu/~maxwell)

MAXWELL MUSEUM  
OF ANTHROPOLOGY,  
Albuquerque, NM  
**Ancestors**  
Long-term. [www.unm.edu/~maxwell](http://www.unm.edu/~maxwell)

MUSEUM OF INDIAN ARTS AND  
CULTURE, Santa Fe, NM  
**Here, Now, and Always**  
Long-term. Organized by the Museum of New  
Mexico Foundation. [www.miaclab.org](http://www.miaclab.org)

EL CAMINO REAL INTERNATIONAL  
HERITAGE CENTER, Socorro, NM  
**Traveling el Camino Real:  
Caminando el Camino Real**  
Long-term. Organized by the Museum of New  
Mexico. [www.nmmonuments.org](http://www.nmmonuments.org)

A:SHIWI A:WAN MUSEUM AND  
HERITAGE CENTER, Zuni, NM  
**Hawikku: Echoes from Our Past**  
Long-term. [ashiwi-museum.org](http://ashiwi-museum.org)

OKLAHOMA HISTORY CENTER,  
Oklahoma City, OK  
**We Are Who We Were**  
Long-term. [www.okhistory.org](http://www.okhistory.org)

BOB BULLOCK TEXAS STATE  
HISTORY MUSEUM, Austin, TX  
**La Belle: The Ship That  
Changed History**  
Long-term. [www.thestoryoftexas.com](http://www.thestoryoftexas.com)

**WEST**  
UNIVERSITY OF ALASKA MUSEUM,  
Fairbanks, AK  
**Rose Berry Alaskan Art Gallery**  
Reinstallation. [www.uaf.edu/museum](http://www.uaf.edu/museum)

PRATT MUSEUM, Homer, AK  
**Kachemak Bay, Alaska: An  
Exploration of People and Place**  
Reinstallation. [www.prattmuseum.org](http://www.prattmuseum.org)

FORT ROSS STATE HISTORIC PARK,  
Jenner, CA  
**Rotchev House Museum**  
Long-term. Organized by the Fort Ross  
Interpretive Association.  
[www.fortrossinterpretive.org](http://www.fortrossinterpretive.org)

FOWLER MUSEUM OF CULTURAL  
HISTORY, UNIVERSITY OF  
CALIFORNIA, LOS ANGELES,  
Los Angeles, CA  
**Intersections: World Arts,  
Local Lives**  
Reinstallation. [www.fowler.ucla.edu](http://www.fowler.ucla.edu)

UNIVERSITY OF SOUTHERN  
CALIFORNIA, Los Angeles, CA  
**Walden, A Game**  
Digital game. [www.waldengame.com](http://www.waldengame.com)

OAKLAND MUSEUM OF  
CALIFORNIA, Oakland, CA  
**Coming to California: The  
Gallery of California History**  
Long-term. [www.museumca.org](http://www.museumca.org)

PERALTA HACIENDA HISTORICAL  
PARK, Oakland, CA  
**Becoming California,  
Becoming America**  
Site interpretation. Organized by the Friends  
of Peralta Hacienda Historical Park.  
[www.peraltahacienda.org](http://www.peraltahacienda.org)

MUSEUM OF HISTORY AND ART,  
ONTARIO, Ontario, CA  
**Road Ways**  
Long-term. [www.ontarioca.gov/museum](http://www.ontarioca.gov/museum)

ASIAN ART MUSEUM OF SAN  
FRANCISCO, San Francisco, CA  
**Permanent Collections Galleries**  
Long-term. [www.asianart.org](http://www.asianart.org)

CHINESE HISTORICAL SOCIETY OF  
AMERICA, San Francisco, CA  
**Chinese American:  
Exclusion/Inclusion**  
Long-term. Organized by the New-York  
Historical Society. [chsa.org](http://chsa.org)

COIT TOWER, RINCON ANNEX,  
CITY COLLEGE, MARINE MARITIME  
MUSEUM, San Francisco, CA  
**New Deal Murals of  
San Francisco**  
**Walking tour.** Organized by KQED, Inc.  
[www.kqed.org](http://www.kqed.org)

MOLLY BROWN HOUSE MUSEUM,  
Denver, CO  
**Molly Brown: The Biography of  
a Changing Nation**  
**Long-term.** [www.mollybrown.org](http://www.mollybrown.org)

KONA COFFEE FARM,  
Captain Cook, HI  
**Kona Coffee Living History  
Farm: A Glimpse into  
the Lifestyle of Kona's  
Coffee Pioneers**  
**Site interpretation.** Organized by the Kona  
Historical Society. [www.konahistorical.org](http://www.konahistorical.org)

KONA HISTORIC RANCH,  
Kealahou, HI  
**H. N. Greenwell Store Museum:  
Experience 19th-Century Life in  
the Hawaiian Kingdom**  
**Site interpretation.** Organized by the Kona  
Historical Society. [www.konahistorical.org](http://www.konahistorical.org)

IDAHO STATE MUSEUM, Boise, ID  
**Idaho: The Land and Its People**  
**Long-term.** [history.idaho.gov/museum](http://history.idaho.gov/museum)

C. M. RUSSELL MUSEUM,  
Great Falls, MT  
**The Bison: American Icon, Heart  
of Plains Indian Culture**  
**Long-term.** [cmrussell.org](http://cmrussell.org)

HIGH DESERT MUSEUM, Bend, OR  
**By Hand Through Memory:  
Native People of the  
Columbia River Plateau  
in the Twentieth Century**  
**Long-term.** [www.highdesertmuseum.org](http://www.highdesertmuseum.org)

UTAH MUSEUM OF NATURAL  
HISTORY, Salt Lake City, UT  
**Native Voices: People of  
the Great Basin and  
Colorado Plateau**  
**Long-term.** [umnh.utah.edu/home](http://umnh.utah.edu/home)

BURKE MUSEUM OF NATURAL  
HISTORY AND CULTURE,  
UNIVERSITY OF WASHINGTON,  
Seattle, WA  
**Pacific Voices**  
**Long-term.**  
[www.washington.edu/burkemuseum](http://www.washington.edu/burkemuseum)

PLAINS INDIAN MUSEUM,  
Cody, WY  
**Plains Indian Museum**  
**Reinstallation.** Organized by the Buffalo Bill  
Center of the West. [centerofthewest.org](http://centerofthewest.org)

All events, exhibitions, and programs listed are supported by grants from the National Endowment for the Humanities, Division of Public Programs, 400 7<sup>th</sup> Street, SW, Washington, DC 20506, (202) 606-8269, [PublicPgms@neh.gov](mailto:PublicPgms@neh.gov). Please contact the host institution for exact dates and times. For more information about NEH and its programs, we invite you to visit our website at [www.neh.gov](http://www.neh.gov)

NATIONAL ENDOWMENT  
FOR THE HUMANITIES  
WASHINGTON, D.C. 20506  
**OFFICIAL BUSINESS**  
PENALTY FOR PRIVATE USE,  
\$300

