



EXHIBITION OPENINGS

APRIL

April 1 to June 30

ST. LOUIS CENTRAL LIBRARY,
St. Louis, MO

**Poetic Voices of the Muslim
World Exhibition**

Traveling. Organized by City Lore, Inc.
www.pvmw.org

April 2 to April 3

PAMPLIN HISTORICAL PARK AND
THE NATIONAL MUSEUM OF THE
CIVIL WAR SOLDIER,
Petersburg, VA

**An American Turning Point:
Civil War 150 HistoryMobile**

Traveling. Organized by the Virginia
Sesquicentennial of the American Civil War
Commission. www.virginiacivilwar.org

April 4

STATE CAPITOL, Richmond, VA

**An American Turning Point:
Civil War 150 HistoryMobile**

Traveling.

April 5 to April 6

SAILOR'S CREEK BATTLEFIELD
STATE PARK, Rice, VA

**An American Turning Point:
Civil War 150 HistoryMobile**

Traveling.

April 8 to April 12

APPOMATTOX COURT HOUSE
NATIONAL HISTORICAL PARK,
Appomattox, VA

**An American Turning Point:
Civil War 150 HistoryMobile**

Traveling.

Fray Andrés García (also known as Provincial Academic II), Saint Joseph, Southern New Mexico, early- to mid-19th century, water-based pigments on cloth and wood. Gift of Fred Harvey Collection, Museum of International Folk Art, IFAF Collection (FA.1979.64.51). From the exhibition *The Red that Colored the World* at the Museum of International Folk Art, Santa Fe, New Mexico. Organized by the International Folk Art Foundation. Courtesy, International Folk Art Foundation. www.internationalfolkart.org



April 12 to September 7

MALTZ MUSEUM OF JEWISH
HERITAGE: THE MUSEUM OF
DIVERSITY AND TOLERANCE,
Beachwood, OH

**Chasing Dreams: Baseball and
Becoming American**

Traveling. Organized by the National Museum
of American Jewish History. www.nmajh.org

April 21 to April 22

BENNETT PLACE HISTORIC SITE,
Durham, NC

**An American Turning Point:
Civil War 150 HistoryMobile**

Traveling.

April 24 to April 26

CAROLINE COUNTY VISITORS
CENTER, Ruther Glen, VA

**An American Turning Point:
Civil War 150 HistoryMobile**

Traveling.

April 26

BALTIMORE MUSEUM OF ART,
Baltimore, MD

**African Art Collection
Reinstallation.** www.artbma.org

April 29 to June 26

ATHENS-CLARKE COUNTY
LIBRARY, Athens, GA

**Dust, Drought, and Dreams
Gone Dry**

Traveling. Organized by the American Library
Association. www.ala.org

April 29 to June 26

WEST TEXAS A&M UNIVERSITY
LIBRARY, Canyon, TX

**Dust, Drought, and Dreams
Gone Dry**

Traveling.

April 29 to June 12

CENTER FOR THE STUDY OF
SLAVERY AND JUSTICE,
Providence, RI

Changing America

Traveling. Organized by the American Library
Association, in collaboration with the
Smithsonian's National Museum of African
American History and Culture and National
Museum of American History. www.ala.org

April 29 to June 12

STATE HISTORICAL SOCIETY OF
NORTH DAKOTA, Bismarck, ND

Changing America

Traveling.

April 29 to May 2

BATH COUNTY RECREATION
CENTER, Hot Springs, VA

**An American Turning Point:
Civil War 150 HistoryMobile**

Traveling.

May 4 to July 25

DANVILLE MUSEUM OF FINE ARTS
AND HISTORY, Danville, VA

**To Be Sold: Virginia and the
American Slave Trade**

Traveling. Organized by the Library of
Virginia Foundation. www.lva.virginia.gov

May 9 to May 10

FORT CLIFTON PARK,
Colonial Heights, VA

**An American Turning Point:
Civil War 150 HistoryMobile**

Traveling.

May 13 to June 26

AUGUSTA-RICHMOND COUNTY
PUBLIC LIBRARY, Augusta, GA

**Lincoln: The Constitution and
the Civil War**

Traveling.

May 13 to June 26

CORTLAND COUNTY HISTORICAL
SOCIETY, Cortland, NY

**Lincoln: The Constitution and
the Civil War**

Traveling.

May 13 to June 26

DUPAGE COUNTY HISTORICAL
SOCIETY, Wheaton, IL

**Lincoln: The Constitution and
the Civil War**

Traveling.

May 13 to June 26

EDISON PUBLIC LIBRARY,
Edison, NJ

**Lincoln: The Constitution and
the Civil War**

Traveling.

May 13 to June 26

FOUNTAINDALE PUBLIC LIBRARY
DISTRICT, Bolingbrook, IL

**Lincoln: The Constitution and
the Civil War**

Traveling.

May 13 to June 26

KNIGHT MUSEUM & SANDHILLS
CENTER, Alliance, NE

**Lincoln: The Constitution and
the Civil War**

Traveling.

May 13 to June 26

MENDOCINO COUNTY MUSEUM,
Willits, CA

**Lincoln: The Constitution and
the Civil War**

Traveling.

May 13 to June 26

NEWPORT NEWS PUBLIC LIBRARY
SYSTEM, Newport News, VA

**Lincoln: The Constitution and
the Civil War**

Traveling.

May 14 to May 17

CHESAPEAKE CITY PARK,
Chesapeake, VA

**An American Turning Point:
Civil War 150 HistoryMobile**

Traveling.

May 16 to November 1

NEW YORK BOTANICAL GARDEN,
Bronx, NY

Frida Kahlo: Art, Garden, Life

Traveling. www.nybg.org

May 17 to September 13

MUSEUM OF INTERNATIONAL FOLK
ART, Santa Fe, NM

The Red that Colored the World

Traveling. Organized by the International Folk
Art Foundation. www.internationalfolkart.org

May 22 to May 24

PUNGO STRAWBERRY FESTIVAL,
PRINCESS ANNE ROAD,
Virginia Beach, VA

**An American Turning Point:
Civil War 150 HistoryMobile**

Traveling.

May 30 to January 3

OAKLAND MUSEUM OF
CALIFORNIA, Oakland, CA

Pacific Worlds

Traveling. Organized by the Oakland Museum
of California Foundation. www.museumca.org

June 6 to September 7

PEABODY ESSEX MUSEUM,
Salem, MA

**American Epics: Thomas Hart
Benton and Hollywood**

Traveling. www.pem.org

June 9 to June 13

FAIRGROUNDS, Alliance, NE

**Nebraska Chautauqua: Free
Land? 1862 and the Shaping of
Modern America**

Traveling. Organized by the Nebraska
Humanities Council.
www.nebraskahumanities.org

June 12 to September 13

BOWERS MUSEUM, Santa Ana, CA

The 1968 Project

Traveling. Organized by the Minnesota
Historical Society. www.the1968exhibit.org

June 13

SMITHFIELD PLANTATION,
Blacksburg, VA

**An American Turning Point:
Civil War 150 HistoryMobile**

Traveling.

June 17 to June 21

FAIRGROUNDS, Kearney, NE
Nebraska Chautauqua: Free Land? 1862 and the Shaping of Modern America
Traveling.

June 20

MYSTIC SEAPORT MUSEUM,
Mystic, CT
Voyaging in the Wake of the Whalers: The 38th Voyage of the Charles W. Morgan
Long-term. www.mysticseaport.org

June 20

THE PEARISBURG PARK,
Pearisburg Park, VA
An American Turning Point: Civil War 150 HistoryMobile
Traveling.

June 24 to August 7

AFRICAN AMERICAN MUSEUM OF IOWA, Cedar Rapids, IA
Changing America
Traveling.

June 24 to August 7

KEENE PUBLIC LIBRARY,
Keene, NH
Changing America
Traveling.

NEH ON THE ROAD

ExhibitsUSA, a national touring exhibitions program of Mid-America Arts Alliance, has partnered with nationally recognized museums to adapt NEH-supported exhibitions for smaller institutions through the *NEH on the Road* initiative. Please contact the Mid-America Arts Alliance if you would like to host any of these exhibitions. Additional NEH on the Road exhibits are listed under the Ongoing Exhibitions Section. www.nehontheroad.org.

April 6 to May 25

BROWN COUNTY HISTORICAL SOCIETY, Hiawatha, KS
Wild Land: Thomas Cole and the Birth of American Landscape Painting
Traveling. Based on a site interpretation by the Greene County Historical Society.

April 6 to May 25

SILENT WINGS MUSEUM,
Lubbock, TX
Our Lives, Our Stories: America's Greatest Generation
Traveling. Based on an exhibition organized by the Minnesota Historical Society.

April 6 to May 25

BRANIGAN CULTURAL CENTER,
Las Cruces, NM
House and Home
Traveling. Based on an exhibition organized by the National Building Museum.

April 6 to May 25

WYANDOTTE COUNTY HISTORICAL MUSEUM, Bonner Springs, KS
Spirited: Prohibition in America
Traveling. Based on an exhibition organized by the National Constitution Center.

April 6 to May 25

STEARNS HISTORY MUSEUM,
St. Cloud, MN
For All The World To See: Visual Culture and the Struggle for Civil Rights
Traveling. Based on an exhibition organized by the University of Maryland, Baltimore County.

June 16 to August 11

PARTHENON, Nashville, TN
Wild Land: Thomas Cole and the Birth of American Landscape Painting
Traveling.

June 16 to August 11

CHIPPEWA VALLEY MUSEUM,
Eau Claire, WI
Our Lives, Our Stories: America's Greatest Generation
Traveling.

June 16 to August 11

LIVING HISTORY FARMS,
Urbandale, IA
House and Home
Traveling.

June 16 to August 11

WILLIAM F. LAMAN PUBLIC LIBRARY, North Little Rock, AR
Spirited: Prohibition in America
Traveling.

June 16 to August 11

LOVE'S JAZZ & ART CENTER,
Omaha, NE
For All The World To See: Visual Culture and the Struggle for Civil Rights
Traveling.

PROGRAMS AND EVENTS

Created Equal: America's Civil Rights Struggle

Spring

"Created Equal: America's Civil Rights Struggle" uses the power of documentary films to encourage public conversations about the changing meanings of freedom and equality in America. The four outstanding documentary films that are the centerpiece of this project—*The Abolitionists*, *Slavery by Another Name*, *Freedom Riders*, and *The Loving Story*—tell the remarkable stories of individuals who challenged the social and legal status quo, from slavery to segregation. Film screenings funded by NEH will be offered at 473 communities across the nation. "Created Equal" is part of the NEH *Bridging Cultures* initiative, produced in partnership with the Gilder Lehrman Institute of American History. www.createdequal.neh.gov

Music Unwound

Lecture programs organized by the Pacific Symphony.

April 9 to April 10

BUFFALO PHILHARMONIC,
Buffalo, NY

Muslim Voices

Reading and discussion programs organized by the New York Council for the Humanities. www.nyhumanities.org

April 6

NORMAN PUBLIC LIBRARY WEST,
Norman, OK

April 8 to April 28

HARRISON PUBLIC LIBRARY,
Harrison, NY

April 10 to June 5

CALHOUN SCHOOL,
New York, NY

April 14

DEARBORN PUBLIC LIBRARY,
Dearborn, MI

April 24 to May 15

ARAB AMERICAN NATIONAL
MUSEUM, Dearborn, MI

May 1 to May 22

P.S. 95Q THE EASTWOOD SCHOOL,
New York, NY

Poetic Voices of the Muslim World

Public programs organized by City Lore, Inc. poeticvoicesofthemuslimworld.org

April 7 to April 21

CENTRAL LIBRARY,
San Francisco, CA

April 29

ST. LOUIS PUBLIC LIBRARY,
St. Louis, MO

BROADCASTS

JUNE

June 30 (check local listings)

1913: Seeds of Conflict

Directed and written by Ben Loeterman.
Produced by Laura Longworth. International
co-producer: Itay Ken-Tor.
1913seedsofconflict.com

ONGOING

Afropop Worldwide

Hosted by Georges Collinet and produced by
Sean Barlow for World Music Productions.
www.afropop.org/wp/hipdeep

American Routes

Produced and hosted by Nick Spitzer.
Distributed by PRX-Public Radio Exchange.
americanroutes.wwno.org

Back Story with the American History Guys

Andrew Wyndham, executive producer.
backstoryradio.org

Radio Diaries

Executive producer, Joe Richman.
www.radiodiaries.org

ONGOING EXHIBITIONS AND WEBSITES

EAST

WADSWORTH ATHENEUM,
Hartford, CT

Coney Island: Visions of an American Dreamland, 1861-2008

Closes May 31.

Traveling. www.thewadsworth.org

INSTITUTE FOR AMERICAN INDIAN
STUDIES, Washington, CT

Interpreting the Native American Landscape:

The Long House Room

Long-term. www.iaismuseum.org

LAFAYETTE SQUARE,
Washington, DC

The Half Had Not Been Told Me: African Americans on Lafayette Square

Long-term. Organized by the National Trust
for Historic Preservation.
www.whitehousehistory.org/decatur-house/african-american-tour/Default.aspx

NATIONAL BUILDING MUSEUM,
Washington, DC

House and Home

Long-term. www.nbm.org

SOLDIERS' HOME, Washington, DC

President Lincoln's Cottage at the Soldiers' Home

Long-term. Organized by the National Trust
for Historic Preservation.
www.lincolncottage.org

MAINE STATE MUSEUM,
Augusta, ME

At Home in Maine

Long-term. mainestatemuseum.org

MAINE HISTORICAL SOCIETY,
Portland, ME

Maine Memory Network

Website. www.mainememory.net

MAINE HUMANITIES COUNCIL,
Portland, ME

Local and Legendary: Maine in the Civil War

Website. civilwar.mainememory.net

BALTIMORE MUSEUM OF ART,
Baltimore, MD

The American Wing

Reinstallation. www.artbma.org

BALTIMORE MUSEUM OF INDUSTRY,
Baltimore, MD

Garment Loft

Long-term. www.thebmi.org

BALTIMORE MUSEUM OF INDUSTRY,
Baltimore, MD

The Kids' Cannery

Long-term. www.thebmi.org

WALTERS ART MUSEUM,
Baltimore, MD

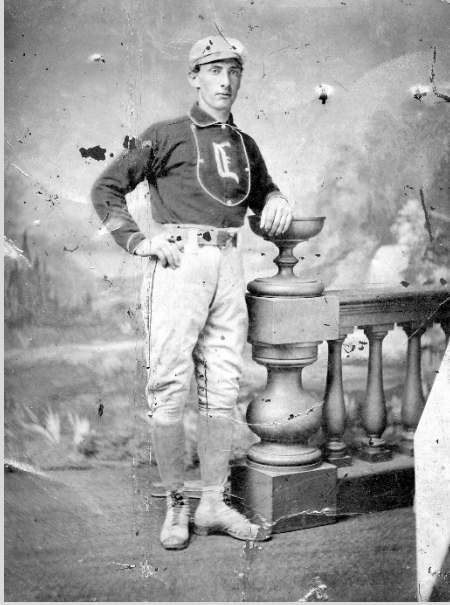
Asian Art Collections

Reinstallation. www.thewalters.org

WALTERS ART MUSEUM,
Baltimore, MD

Medieval Collection

Reinstallation. www.thewalters.org



Photograph of Rudolph Kalish, 1870, from the traveling exhibition *Chasing Dreams: Baseball and Becoming American* at the Maltz Museum of Jewish Heritage: The Museum of Diversity and Tolerance, Beachwood, Ohio. Courtesy, Peter S. Horvitz. www.nmajh.org

WALTERS ART MUSEUM,
Baltimore, MD
Egyptian Collection
Reinstallation. www.thewalters.org

ST. MARY'S CITY, VAN SWERINGEN
SITE, St. Mary's City, MD
Van Sweringen
Archaeological Site
Site interpretation. Organized by the Historic St. Mary's City Commission. www.stmaryscity.org

BOSTON CHILDREN'S MUSEUM,
Boston, MA
Boston Black: A City Connects
Long-term. www.bostonkids.org

COMMONWEALTH MUSEUM,
Boston, MA
Our Common Wealth:
The Massachusetts
Experiment in Democracy
Long-term. Organized by the Friends of the Commonwealth Museum. www.sec.state.ma.us/mus/exhibits/permanent/our-common-wealth/our-common-wealth.html

USS CONSTITUTION MUSEUM,
Boston, MA
All Hands on Deck: A Sailor's
Life in 1812
Long-term. Organized by the USS Constitution Museum Foundation, Inc. www.usconstitutionmuseum.org

HARVARD UNIVERSITY,
Cambridge, MA
DoHistory
Website. www.dohistory.org

MOUNT AUBURN CEMETERY,
Cambridge, MA
Mount Auburn Cemetery:
A New American Landscape
Long-term. Organized by the Friends of Mount Auburn Cemetery. www.mountauburn.org

CONCORD MUSEUM, Concord, MA
"Why Concord?" The History of
Concord, Massachusetts
Long-term. www.concordmuseum.org

POCUMTUCK VALLEY MEMORIAL
ASSOCIATION, Deerfield, MA
Raid on Deerfield: The Many
Stories of 1704
Website. www.1704.deerfield.history.museum

MARTHA'S VINEYARD MUSEUM,
Edgartown, MA
Laura Jernegan: Girl on
a Whaleship
Website. www.girlonawhaleship.org

MARTHA'S VINEYARD MUSEUM,
Edgartown, MA
Enchanted Isle: The Story
of Martha's Vineyard
Long-term.
www.mvmuseum.org/permanent.php#enchantedisle

HOLYOKE HERITAGE STATE PARK,
CHILDREN'S MUSEUM AT
HOLYOKE, WISTARIAHURST
MUSEUM, Holyoke, MA
Creating Holyoke:
Immigrants' and Migrants'
Search for Community
Site interpretation. Organized by the Wistariahurst Museum/City of Holyoke. www.creatingholyokey.org

ARNOLD ARBORETUM OF
HARVARD UNIVERSITY,
Jamaica Plain, MA
Science in the
Pleasure Ground:
An Exploration of
Arboretum History
Long-term. www.arboretum.harvard.edu

NEW BEDFORD WHALING
MUSEUM, New Bedford, MA
From Pursuit to Preservation:
The Global Story of Whales
and Whaling
Long-term.
www.whalingmuseum.org/explore/exhibitions/current/pursuit-to-preservation

HANCOCK SHAKER VILLAGE,
Pittsfield, MA
Audio Tour
Site interpretation.
www.hancockshakervillage.org

SPRINGFIELD TECHNICAL
COMMUNITY COLLEGE,
Springfield, MA
**Shays' Rebellion and the
Making of a Nation: From
Revolution to Constitution**
Website. www.shaysrebellion.stcc.edu

OLD STURBRIDGE VILLAGE,
Sturbridge, MA
**Back to Our Roots: A New
Vision of New England Farming
and Rural Life**
Site interpretation. www.osv.org

MUSEUM OF NEW HAMPSHIRE
HISTORY, Concord, NH
**New Hampshire Through
Many Eyes**
Long-term. Organized by the New Hampshire
Historical Society. www.nhhistory.org

PEASE PUBLIC LIBRARY, Pease, NH
Changing America
Closes April 17.
Traveling. Organized by the American Library
Association, in collaboration with the
Smithsonian's National Museum of African
American History and Culture and National
Museum of American History. www.ala.org

STRAWBERRY BANKE,
Portsmouth, NH
**Becoming Americans: The
Shapiro Story, 1898-1928**
Long-term. www.strawberybanke.org

STRAWBERRY BANKE,
Portsmouth, NH
**Crossroads of a Neighborhood
in Change: The Corner Grocery
Store at Strawberry Banke
During WWII**
Long-term. www.strawberybanke.org

NEWARK MUSEUM, Newark, NJ
Picturing America
Reinstallation. www.newarkmuseum.org

KEAN UNIVERSITY, HUMAN RIGHTS
INSTITUTE GALLERY, Union, NJ
**The World Knew: Jan Karski's
Mission for Humanity**
Closes August 31.
Traveling. Organized by the Jan Karski
Educational Foundation.
www.jankarski.net/en



Left: Thomas Hart Benton, *Portrait of a Musician*, 1949, casein, egg tempera, and oil varnish on canvas, mounted on wood panel, 48 1/2 x 32 in. (123.2 x 81.3 cm), Museum of Art and Archaeology, University of Missouri-Columbia, Anonymous gift, 67.136, Art © T.H. Benton and R.P. Benton Testamentary Trusts/UMB, Bank Trustee/Licensed by VAGA, New York, NY. Right: Thomas Hart Benton, *Aaron*, 1941, oil and egg tempera on canvas, mounted on plywood, 30 5/16 x 24 5/16 in. (77 x 61.8 cm), Pennsylvania Academy of the Fine Arts, Philadelphia, Joseph E. Temple Fund, 1943.3, Art © T.H. Benton and R.P. Benton Testamentary Trusts/UMB, Bank Trustee/Licensed by VAGA, New York, NY. From the exhibition *American Epics: Thomas Hart Benton and Hollywood* at the Peabody Essex Museum, Salem, Massachusetts. Courtesy, Peabody Essex Museum. www.pem.org



Left: U.S.O. promotional pamphlets, 1941, photo E.G. Schempf, 2010. Right: V-mail and other homefront materials, c. 1940s, photo E.G. Schempf, 2010. From the NEH on the Road traveling exhibition *Our Lives, Our Stories: America's Greatest Generation*. Courtesy, Mid-America Arts Alliance. www.nehontheroad.org

NEW YORK STATE MUSEUM,
Albany, NY
A Mohawk-Iroquois Village
Long-term. www.nysm.nysed.gov

MONTGOMERY PLACE, Annandale-
on-Hudson, NY
**American Arcadia: People,
Landscape, and Nature at
Montgomery Place**
Site interpretation. Organized by Historic
Hudson Valley.
www.hudsonvalley.org/content/view/16/46

BROOKLYN CHILDREN'S MUSEUM,
Brooklyn, NY
World Brooklyn
Long-term. www.bchildmus.org

BROOKLYN HISTORICAL SOCIETY,
Brooklyn, NY
**Crossing Borders, Bridging
Generations: A Study of Mixed-
Heritage Families in Brooklyn**
Website. www.cbbg.brooklynhistory.org

BROOKLYN HISTORICAL SOCIETY,
WEEKSVILLE HERITAGE CENTER,
IRONDALE CENTER, Brooklyn, NY
In Pursuit of Freedom
Long-term. Organized by the Brooklyn
Historical Society. www.brooklynhistory.org

BROOKLYN MUSEUM OF ART,
Brooklyn, NY
Egypt Reborn: Art for Eternity
Reinstallation. www.brooklynart.org

BROOKLYN NAVY YARD,
Brooklyn, NY
**Brooklyn Navy Yard: Past,
Present, and Future**
Long-term. Organized by the Brooklyn Navy
Yard Development Corporation.
www.bldg92.com

THOMAS COLE NATIONAL
HISTORIC SITE, Catskill, NY
**The Home and Studio of Thomas
Cole, Founder of the Hudson
River School of Art**
Long-term. www.thomascole.org

THOMAS COLE NATIONAL
HISTORIC SITE, Catskill, NY
Hudson River School Art Trail
Website. www.hudsonriverschool.org

FENIMORE ART MUSEUM,
Cooperstown, NY
Seneca Log House
Long-term. Organized by the Farmers'
Museum. www.farmersmuseum.org

FENIMORE ART MUSEUM,
Cooperstown, NY
Mohawk Bark House
Long-term. Organized by the Farmers'
Museum. www.fenimoreartmuseum.org

STATE UNIVERSITY OF NEW YORK,
Fredonia, NY
**Lincoln: The Constitution and
the Civil War**
Closes May 1.
Traveling. Organized by the National
Constitution Center. www.ala.org

STE. MARIE DE GANNENTAHA
LIVING HISTORY MUSEUM,
Liverpool, NY
**Sainte Marie Among
the Iroquois**
Long-term. Organized by the Office of
Museums, Onondaga County Parks.
www.onondagacountyparks.com



Photograph of the composer, oud player, poet, and chronicler Wasif Jawhariyyeh from the documentary *1913: Seeds of Conflict*, scheduled to broadcast June 30 (check local listings). Courtesy, Institute for Palestine Studies. www.seedsofconflict.com

CENTER FOR NEW AMERICAN
MEDIA, INC., New York, NY

Past/Present

Website. www.pastpresent.org

CITY LORE, New York, NY

**Poetic Voices of the
Muslim World**

Website. Organized by City Lore, Inc.
www.pvmw.org

ELDRIDGE STREET SYNAGOGUE,
New York, NY

Museum at Eldridge Street

Site interpretation. Organized by the Eldridge
Street Project. www.eldridgestreet.org

ELLIS ISLAND, New York, NY

**Future in the Balance:
Immigration, Public Health, and
the Ellis Island Hospitals**

Long-term. Organized by the Save Ellis Island,
Inc. www.saveellisland.org

LOWER EAST SIDE TENEMENT
MUSEUM, New York, NY

Shop Life

Long-term. www.tenement.org

LOWER EAST SIDE TENEMENT
MUSEUM, New York, NY

97 Orchard Street

Tenement Tours

Long-term. www.tenement.org

MOUNT VERNON HOTEL MUSEUM
& GARDEN, New York, NY

**Reinterpretation of the Abigail
Adams Smith Museum as the
Mount Vernon Hotel (1826-1833)**

Reinstallation. Organized by the Colonial
Dames of America. www.mvhm.org

NEW-YORK HISTORICAL SOCIETY,
New York, NY

Chinese American:

Exclusion/Inclusion

Closes May 25.

Traveling. www.nyhistory.org

RUBIN MUSEUM OF ART,
New York, NY

**Explore Art: Life Through
Himalayan Paintings**

Website. exploreart.rma2.org

WNET.ORG, New York, NY

**Mission US: A Revolutionary
Way to Learn History**

Website. www.mission-us.org

ROCHESTER MUSEUM AND SCIENCE
CENTER, Rochester, NY

Expedition Earth

Reinstallation. www.rmsc.org



Visitor playing the steel drum from the exhibition *Boston Black: A City Connects* at the Boston Children's Museum, Boston, Massachusetts. Courtesy, Boston Children's Museum. Credit, Gus Freedman. www.cmb.org

UNIVERSITY OF PENNSYLVANIA
MUSEUM OF ARCHAEOLOGY
AND ANTHROPOLOGY,
Philadelphia, PA
**Living in Balance:
The Universe of the Hopi,
Zuni, Navajo, and Apache**
Long-term. www.museum.upenn.edu

CARNEGIE MUSEUM OF NATURAL
HISTORY, Pittsburgh, PA
**Alcoa Foundation Hall of
American Indians**
Long-term. www.carnegiemnh.org

CARNEGIE MUSEUM OF NATURAL
HISTORY, Pittsburgh, PA
Walton Hall of Ancient Egypt
Long-term. www.carnegiemnh.org

SENATOR JOHN HEINZ PITTSBURGH
REGIONAL HISTORY CENTER,
Pittsburgh, PA
**Pittsburgh: A Tradition
of Innovation**
Long-term. www.pghhistory.org

MUSEUM OF NEWPORT HISTORY,
Newport, RI
**Museum of Newport History at
the Brick Market**
Long-term. Organized by the Newport
Historical Society and the Museum of Newport
History. www.newporthistorical.org

COMMUNITY COLLEGE OF RHODE
ISLAND, Warwick, RI
**Lincoln: The Constitution and
the Civil War**
Closes May 1.
Traveling. Organized by the National
Constitution Center. www.ala.org

MUSEUM OF WORK AND CULTURE,
Woonsocket, RI
**La Survivance: French-Canadians
in Woonsocket, Rhode Island**
Long-term. Organized by the Rhode Island
Historical Society. www.rihs.org

ROKEBY MUSEUM, Ferrisburgh, VT
**Underground Railroad
in Vermont**
Long-term. www.rokeby.org

PHILIPSBURG MANOR,
Sleepy Hollow, NY
Philipsburg Manor
Site interpretation. Organized by Historic
Hudson Valley. www.hudsonvalley.org

LONG ISLAND MUSEUM OF
AMERICAN ART, HISTORY, AND
CARRIAGES, Stony Brook, NY
Carriages for Sport and Pleasure
Long-term. www.longislandmuseum.org

LONG ISLAND MUSEUM OF
AMERICAN ART, HISTORY, AND
CARRIAGES, Stony Brook, NY
Streets of New York
Long-term. www.longislandmuseum.org

LONG ISLAND MUSEUM OF
AMERICAN ART, HISTORY, AND
CARRIAGES, Stony Brook, NY
**Going Places: How Horse-Drawn
Vehicles Shaped American Life**
Long-term. www.longislandmuseum.org

WITF, INC., Harrisburg, PA
ExplorePAHistory.com
Website. www.explorepahistory.com

JOSEPH PRIESTLEY HOME,
Northumberland, PA
**Joseph Priestley: Reason, Order,
and Plainness**
Site interpretation. Organized by the Friends
of Joseph Priestley Home.
www.josephpriestleyhouse.org

INDEPENDENCE SEAPORT MUSEUM,
Philadelphia, PA
Home Port Philadelphia
Long-term. www.phillyseaport.org

PHILADELPHIA MUSEUM OF ART,
Philadelphia, PA
European Collections
Reinstallation. www.philamuseum.org

PHILADELPHIA OUTDOOR
SCULPTURE SITES,
Philadelphia, PA
Museum Without Walls
Walking tour. Organized by the Association
for Public Art. associationforpublicart.org

PLEASE TOUCH MUSEUM®,
Philadelphia, PA
Centennial Exploration
Long-term. www.pleasetouchmuseum.org

MIDWEST

ADLER PLANETARIUM &
ASTRONOMY MUSEUM, Chicago, IL
**Bringing the Heavens to Earth:
Cultural Astronomies Around
the World**

Long-term. www.adlerplanetarium.org

ADLER PLANETARIUM &
ASTRONOMY MUSEUM, Chicago, IL
The Universe in Your Hands

Long-term. www.adlerplanetarium.org

CHICAGO CULTURAL CENTER,
Chicago, IL

**Archibald Motley:
Jazz Age Modernist**

Closes August 31.

Traveling. Organized by Duke University.
nasher.duke.edu/exhibitions/motley

FIELD MUSEUM, Chicago, IL
Africa

Long-term. www.fieldmuseum.org

FIELD MUSEUM, Chicago, IL
**Peoples of the Pacific: Traveling
the Pacific and Pacific Spirits**

Long-term. www.fieldmuseum.org

HULL-HOUSE MUSEUM,
Chicago, IL

**Redefining Democracy:
Jane Addams and the Hull-
House Settlement**

Reinstallation. Organized by the University of
Illinois at Chicago.
www.uic.edu/jaddams/hull

NATIONAL MUSEUM OF MEXICAN
ART, Chicago, IL

**Nuestras Historias: Stories of
Mexican Identity from the
National Museum of Mexican
Art's Permanent Collection**

Reinstallation.

www.nationalmuseumofmexicanart.org

NEWBERRY LIBRARY, Chicago, IL
The Indians of the Midwest

Website. www.newberry.org

Astrolabe, [Jean Fusoris]. Paris, France, c.
1400. W-264 from the exhibition *The
Universe in Your Hands* at the Adler
Planetarium & Astronomy Museum,
Chicago, Illinois. Courtesy, Adler
Planetarium & Astronomy Museum.
www.adlerplanetarium.org



CAHOKIA MOUNDS MUSEUM
SOCIETY, Collinsville, IL
Mark of the Mississippians

Website. www.archaeoexplorer.com/media

ILLINOIS VALLEY COMMUNITY
COLLEGE, Oglesby, IL

**Lincoln: The Constitution and
the Civil War**

Closes May 1.

Traveling. Organized by the National
Constitution Center. www.ala.org

ILLINOIS STATE MUSEUM,
Springfield, IL

At Home in the Heartland
Long-term. www.museum.state.il.us

ANDERSON UNIVERSITY,
Anderson, IN

**Lincoln: The Constitution and
the Civil War**

Closes May 1.

Traveling. Organized by the National
Constitution Center. www.ala.org

CONNER PRAIRIE MUSEUM,
Fishers, IN

**1863 Civil War Journey:
Raid on Indiana**

Long-term. civilwar.connerprairie.org

CHILDREN'S MUSEUM OF
INDIANAPOLIS, Indianapolis, IN
The Power of Children:

Making a Difference

Long-term.

[www.childrensmuseum.org/themuseum/
powerofchildren/html/index.html](http://www.childrensmuseum.org/themuseum/powerofchildren/html/index.html)

MISSISSIPPI RIVER MUSEUM AND
AQUARIUM, Dubuque, IA

River Discovery

Long-term. Organized by the Dubuque County
Historical Society.

www.mississippirivermuseum.com

THE HENRY FORD MUSEUM,
Dearborn, MI

**Heroes of the Sky: Adventures in
Early Flight**

Long-term. www.thehenryford.org

THE HENRY FORD MUSEUM,
Dearborn, MI

Your Place in Time:

20th-Century America

Long-term. www.thehenryford.org

THE HENRY FORD MUSEUM,
Dearborn, MI

**Made in America: The History of
the American Industrial System**

Long-term. www.thehenryford.org



Fon, Benin, *Figure*, iron, early 20th century, from the reinstallation **Material Journeys: African Art in Motion** at the Minneapolis Institute of Arts. Gift of Curtis Galleries, Inc. 2001.64. Courtesy and credit, Minneapolis Institute of Arts. www.artsmia.org

DETROIT INSTITUTE OF ARTS,
Detroit, MI

Great Art: New Start
Reinstallation. www.dia.org

MICHIGAN STATE UNIVERSITY,
East Lansing, MI

Voices from Detroit:
American Black Journal Online
Website. www.matrix.msu.edu/~abj

GRAND RAPIDS PUBLIC MUSEUM,
Grand Rapids, MI

Furniture City
Long-term. www.grmuseum.org

GRAND RAPIDS PUBLIC MUSEUM,
Grand Rapids, MI

Newcomers: The People of This Place
Long-term. www.grmuseum.org

GRAND RAPIDS PUBLIC MUSEUM,
Grand Rapids, MI

Anishinabek: The People of This Place
Long-term. www.grmuseum.org

INTERNATIONAL WOLF CENTER,
Ely, MN

Wolves and Humans:
Coexistence, Competition, and Conflict
Long-term. Organized by the Science Museum of Minnesota. www.wolf.org

MILL CITY MUSEUM,
Minneapolis, MN
Mill City Museum

Long-term. Organized by the Minnesota Historical Society. www.millcitymuseum.org

MINNEAPOLIS INSTITUTE OF ART,
Minneapolis, MN

Material Journeys: African Art in Motion
Reinstallation. Organized by the Minneapolis Society of Fine Arts. www.artsmia.org

MILLE LACS INDIAN MUSEUM,
Onamia, MN

Learn About Our Past: The Story of the Mille Lacs Band of Ojibwe
Long-term. Organized by the Minnesota Historical Society. www.mnhs.org

LANDMARK CENTER, St. Paul, MN

Uncle Sam Worked Here
Long-term. Organized by Minnesota Landmarks. www.landmarkcenter.org

MINNESOTA HISTORICAL SOCIETY,
St. Paul, MN

Open House
Long-term. www.mnhs.org

MINNESOTA HISTORY CENTER,
St. Paul, MN

Minnesota's Greatest Generation: The Depression, The War, The Boom

Long-term. Organized by the Minnesota Historical Society. www.mnhs.org/people/mngg/index.htm

MINNESOTA PUBLIC RADIO,
St. Paul, MN

On Being: Rabindranath Tagore
Website. www.onbeing.org

UNIVERSITY OF NEBRASKA, BOARD OF REGENTS, Lincoln, NE

The Journals of the Lewis and Clark Expedition Online Edition
Website. lewisandclarkjournals.unl.edu

BARNES COUNTY HISTORICAL SOCIETY, Valley City, ND

Lincoln: The Constitution and the Civil War
Closes May 1.

Traveling. Organized by the National Constitution Center. www.ala.org

CINCINNATI ART MUSEUM,
Cincinnati, OH

The Cincinnati Wing: The Story of Art in the Queen City
Long-term. www.cincinnatiartmuseum.org

KENT STATE UNIVERSITY, VISITORS CENTER, Kent, OH

Making Meaning of May 4th: The Kent State Shootings in American History

Long-term. Organized by Kent State University. www.kent.edu

OHIO STATE UNIVERSITY,
Newark, OH
**The Ancient Ohio Trail:
A Media-Enhanced Cultural
Heritage Experience**

Website. Organized by the Ohio State
University Research Foundation.
www.ancientohiotrail.org

URBANA UNIVERSITY,
SWEDENBORG MEMORIAL LIBRARY,
Urbana, OH
**Dust, Drought, and Dreams
Gone Dry**

Closes April 17.
Traveling. Organized by the American Library
Association. www.ala.org

SOUTH DAKOTA STATE HISTORICAL
SOCIETY, CULTURAL HERITAGE
CENTER, Pierre, SD
Proving Up

Long-term. history.sd.gov/museum

CHIPPEWA VALLEY MUSEUM,
Eau Claire, WI
**Farm Life: A Century of
Change for Farm Families and
Their Neighbors**

Long-term. www.cvmuseum.com

CHIPPEWA VALLEY MUSEUM,
Eau Claire, WI
**Changing Currents: Reinventing
the Chippewa Valley**

Long-term. www.cvmuseum.com

MILWAUKEE PUBLIC MUSEUM,
Milwaukee, WI
A Tribute to Survival

Long-term. www.mpm.edu

SOUTH

CARL ELLIOTT HOUSE MUSEUM,
Jasper, AL
Carl Elliott House

Long-term. Organized by Bevill State
Community College. www.bscc.edu/elliott

FLORIDA ATLANTIC UNIVERSITY,
Boca Raton, FL
**Lincoln: The Constitution and
the Civil War**

Closes May 1.
Traveling. Organized by the National
Constitution Center. www.ala.org

FLORIDA MUSEUM OF NATURAL
HISTORY, Gainesville, FL
**South Florida: People and
Environments**

Long-term. Organized by the University of
Florida. www.flmnh.ufl.edu

MISSION SAN LUIS, Tallahassee, FL
**San Luis de Apalachee:
Interpretation of a 17th-Century
Spanish Mission**

Long-term. Organized by the Florida Division
of Historical Resources.
www.missionsanluis.org

ATLANTA HISTORY CENTER,
Atlanta, GA
**Metropolitan Frontiers:
Atlanta, 1835–2000**

Long-term. www.atlhist.org

ATLANTA HISTORY CENTER,
Atlanta, GA
**Turning Point: The American
Civil War**

Long-term. www.atlhist.org

ROBERT W. WOODRUFF LIBRARY,
ATLANTA UNIVERSITY CENTER,
Atlanta, GA
**Bandits & Heroes, Poets &
Saints: Popular Art of the
Northeast of Brazil**

Closes May 18.
Traveling. Organized by Con/Vida - Popular
Arts of the Americas. thewright.org

SOCIETY OF BIBLICAL LITERATURE,
Decatur, GA
**Bible Odyssey: Exploring People,
Places, and Passages**

Website. www.sbl-site.org

SMYRNA PUBLIC LIBRARY,
Smyrna, GA
**Dust, Drought, and Dreams
Gone Dry**

Closes April 17.
Traveling. Organized by the American Library
Association. www.ala.org

TERREBONNE PARISH LIBRARY,
Houma, LA
**Lincoln: The Constitution and
the Civil War**

Closes May 1.
Traveling. Organized by the National
Constitution Center. www.ala.org

SMITH ROBERTSON MUSEUM &
CULTURAL CENTER, Jackson, MS
**Field to Factory: Afro-American
Migration, 1915–1940**

Long-term.
[www.jacksonms.gov/visitors/museums/
smithrobertson](http://www.jacksonms.gov/visitors/museums/smithrobertson)

LAUREN ROGERS MUSEUM OF ART,
Laurel, MS
**By Native Hands: Woven
Treasures from the Lauren
Rogers Museum of Art**

Reinstallation. www.lрма.org

LEVINE MUSEUM OF THE NEW
SOUTH, Charlotte, NC
**Cotton Fields to Skyscrapers:
Charlotte and the Carolina
Piedmont in the New South**

Long-term. www.museumofthenewsouth.org

MUSEUM OF THE CHEROKEE
INDIAN, Cherokee, NC
**Emissaries of Peace: The 1762
Cherokee/British Delegations**

Long-term. www.cherokeemuseum.org

HERMITAGE, Hermitage, TN
**The Hermitage, Andrew Jackson,
and a Changing America**

Site interpretation. www.thehermitage.com

EAST TENNESSEE HISTORICAL
SOCIETY, Knoxville, TN
**Voices of the Land: The People
of East Tennessee**

Long-term. www.east-tennessee-history.org

NATIONAL CIVIL RIGHTS MUSEUM,
Memphis, TN

Lorraine Motel Exhibits

Long-term. www.civilrightsmuseum.org

MUSEUM OF THE CONFEDERACY,
Appomattox, VA

**An American Turning Point: The
Civil War in Virginia: Surviving
War and Waging War**

Closes September 13.

Traveling. Organized by the Virginia
Sesquicentennial of the American Civil War
Commission. www.virginiacivilwar.org

MONTICELLO, Charlottesville, VA
**Domestic Life and the
Plantation Community at
Jefferson's Monticello**

Site interpretation. Organized by the Thomas
Jefferson Memorial Foundation.
www.monticello.org

MONTICELLO, Charlottesville, VA
**Mulberry Row and the
Landscape of Slavery at
Jefferson's Monticello**

Site interpretation. Organized by the Thomas
Jefferson Memorial Foundation.
www.monticello.org

MONTICELLO VISITOR CENTER,
Charlottesville, VA

To Try All Things

Long-term. Organized by the Thomas Jefferson
Memorial Foundation. www.monticello.org

GEORGE MASON UNIVERSITY,
Fairfax, VA

Gulag: Many Days, Many Lives

Website. gulaghistory.org

GEORGE MASON UNIVERSITY,
Fairfax, VA

**Hidden Histories on America's
Front Lawn**

Website. mobile.mallhistory.us

R. R. MOTON HIGH SCHOOL,
Farmville, VA

**The Moton School Story:
Children of Courage**

Long-term. Organized by Robert R. Moton
Museum Inc. www.motonmuseum.org

RUSSELL COUNTY PUBLIC LIBRARY,
Lebanon, VA

**To Be Sold: Virginia and the
American Slave Trade**

Closes May 2.

Traveling. Organized by the Library of
Virginia Foundation. www.lva.virginia.gov

LIBRARY OF VIRGINIA,
Richmond, VA

**To Be Sold: Virginia and the
American Slave Trade**

Closes May 30.

Traveling. Organized by the Library of
Virginia Foundation. www.lva.virginia.gov

MAYMONT, Richmond, VA
**In Service and Beyond:
Domestic Work and Life in
a Gilded Age Mansion**

Long-term. Organized by the Maymont
Foundation. www.maymont.org

VALENTINE RICHMOND HISTORY
CENTER, Richmond, VA

**Creating History:
The Valentine Family and
the Valentine Museum**

Long-term. www.richmondhistorycenter.com

VIRGINIA HISTORICAL SOCIETY,
Richmond, VA

**An American Turning Point:
The Civil War in Virginia**

Website. Organized by the Virginia
Sesquicentennial of the American Civil
War Commission.
[www.vahistorical.org/civilwar/
introduction.htm](http://www.vahistorical.org/civilwar/introduction.htm)

COLONIAL WILLIAMSBURG,
Williamsburg, VA

**From Subjects to Citizens:
Williamsburg and the
American Revolution**

Website. www.ouramericanrevolution.org

SOUTHWEST

BISBEE MINING & HISTORICAL
MUSEUM, Bisbee, AZ

**Bisbee: Urban Outpost on
the Frontier**

Long-term. www.bisbeemuseum.org

FORT APACHE HISTORIC PARK,
Fort Apache, AZ

**Transitions in the Apache World:
The Fort Apache Legacy**

Long-term. Organized by the White Mountain
Apache Tribe.
www.wmat.nsn.us/fortapachepark.htm

DESERT BOTANICAL GARDEN,
Phoenix, AZ

**Plants and People of the
Sonoran Desert**

Long-term. www.dbg.org

HEARD MUSEUM, Phoenix, AZ

**Remembering Our Indian
School Days: The Boarding
School Experience**

Long-term. www.heard.org

HEARD MUSEUM, Phoenix, AZ
**Time Exposures: Picturing a
History of Isleta Pueblo in the
19th Century**

Closes September 27.

Traveling. Organized by the Pueblo of Isleta.
www.isletapueblo.com

ARIZONA STATE MUSEUM,
Tucson, AZ

**Paths of Life: American Indians
of the Southwest**

Long-term. Organized by the University of
Arizona. www.statemuseum.arizona.edu

MAXWELL MUSEUM OF
ANTHROPOLOGY,
Albuquerque, NM

People of the Southwest

Long-term. www.unm.edu/~maxwell

MAXWELL MUSEUM OF
ANTHROPOLOGY,
Albuquerque, NM

Ancestors

Long-term. www.unm.edu/~maxwell

MUSEUM OF INDIAN ARTS AND
CULTURE, Santa Fe, NM

Here, Now, and Always

Long-term. Organized by the Museum of New
Mexico Foundation. www.miaclab.org

EL CAMINO REAL INTERNATIONAL HERITAGE CENTER, Socorro, NM
Traveling el Camino Real: Caminando el Camino Real
Long-term. Organized by the Museum of New Mexico. www.nmmonuments.org

A:SHIWI A:WAN MUSEUM AND HERITAGE CENTER, Zuni, NM
Hawikku: Echoes from Our Past
Long-term. www.ashiwi.org/enterprise.aspx

OKLAHOMA HISTORY CENTER, Oklahoma City, OK
We Are Who We Were
Long-term. Organized by the Oklahoma Historical Society. www.okhistory.org

BOB BULLOCK TEXAS STATE HISTORY MUSEUM, Austin, TX
La Belle: The Ship That Changed History
Closes June 15.
Traveling. www.thestoryoftexas.com

WEST

ANCHORAGE MUSEUM, Anchorage, AK
Arctic Ambitions: Captain Cook and the Northwest Passage
Closes September 7.
Traveling. Organized by the Anchorage Museum Association.
www.anchoragemuseum.org

ANCHORAGE MUSEUM OF HISTORY AND ART, Anchorage, AK
Alaska Gallery
Reinstallation. Organized by the Anchorage Museum Association.
www.anchoragemuseum.org

UNIVERSITY OF ALASKA MUSEUM, Fairbanks, AK
Rose Berry Alaskan Art Gallery
Reinstallation. www.uaf.edu/museum

PRATT MUSEUM, Homer, AK
Kachemak Bay, Alaska: An Exploration of People and Place
Reinstallation. www.prattmuseum.org

MUSEUM OF SAN RAMON VALLEY, Danville, CA
Lincoln: The Constitution and the Civil War
Closes May 1.
Traveling. Organized by the National Constitution Center. www.ala.org

FORT ROSS STATE HISTORIC PARK, Jenner, CA
Rotchev House Museum Exhibit at Fort Ross, California
Long-term. Organized by the Fort Ross Interpretive Association.
www.fortrossinterpretive.org

FOWLER MUSEUM AT UCLA, Los Angeles, CA
Intersections: World Arts, Local Lives
Reinstallation. www.fowler.ucla.edu

OAKLAND MUSEUM OF CALIFORNIA, Oakland, CA
Coming to California: The Gallery of California History
Long-term. Organized by the Oakland Museum of California Foundation.
www.museumca.org

PERALTA HACIENDA HISTORICAL PARK, Oakland, CA
Every Human Being Makes History
Site interpretation. Organized by the Friends of Peralta Hacienda Historical Park.
www.peraltahacienda.org

MUSEUM OF HISTORY AND ART, ONTARIO, Ontario, CA
Road Ways
Long-term. Organized by the Museum of History and Art.
www.ci.ontario.ca.us/index.cfm/1605

ASIAN ART MUSEUM OF SAN FRANCISCO, San Francisco, CA
Permanent Collections Galleries
Long-term. www.asianart.org

COIT TOWER, RINCON ANNEX, CITY COLLEGE, MARINE MARITIME MUSEUM, San Francisco, CA
New Deal Murals of San Francisco
Walking tour. Organized by KQED, Inc.
www.kqed.org

SAN FRANCISCO MAIN LIBRARY, San Francisco, CA
Poetic Voices of the Muslim World Exhibition
Closes May 24.
Traveling. Organized by City Lore, Inc.
www.pvmw.org

BAY AREA DISCOVERY MUSEUM, Sausalito, CA
Nurturing Creativity through Arts, Science, & Environment
Long-term. www.baykidsmuseum.org

DENVER ART MUSEUM, Denver, CO
Asian Art Collection
Reinstallation. www.denverartmuseum.org

HISTORY COLORADO, Denver, CO
The 1968 Project
Closes May 10.
Traveling. Organized by the Minnesota Historical Society. www.the1968exhibit.org

MOLLY BROWN HOUSE MUSEUM, Denver, CO
Molly Brown: The Biography of a Changing Nation
Long-term. www.mollybrown.org

ARIZONA STATE UNIVERSITY, Grand Canyon, CO
Nature, Culture, and History at the Grand Canyon
Website. grandcanyonhistory.clas.asu.edu

HISTORY COLORADO, Pueblo, CO
Changing America
Closes April 17.
Traveling. Organized by the American Library Association, in collaboration with the Smithsonian's National Museum of African American History and Culture and National Museum of American History. www.ala.org

GARFIELD COUNTY LIBRARIES,
RIFLE BRANCH LIBRARY, Rifle, CO
**Dust, Drought, and Dreams
Gone Dry**

Closes April 17.

Traveling. Organized by the American Library
Association. www.ala.org

KONA COFFEE FARM,
Captain Cook, HI
**Kona Coffee Living
History Farm: A Glimpse
into the Lifestyle of Kona's
Coffee Pioneers**

Site interpretation. Organized by the Kona
Historical Society. www.konahistorical.org

KONA HISTORIC RANCH,
Kealahou, HI
**H. N. Greenwell Store Museum:
Experience 19th-Century Life in
the Hawaiian Kingdom**

Site interpretation. Organized by the Kona
Historical Society. www.konahistorical.org

C. M. RUSSELL MUSEUM,
Great Falls, MT
**The Bison: American Icon, Heart
of Plains Indian Culture**

Long-term. Organized by the Trigg C. M.
Russell Foundation. cmrussell.org

HIGH DESERT MUSEUM, Bend, OR
**By Hand Through Memory:
Native People of the
Columbia River Plateau in
the Twentieth Century**

Long-term. www.highdesertmuseum.org

OREGON MUSEUM OF SCIENCE AND
INDUSTRY, Portland, OR
More Power to You!

Long-term. www.oms.edu

UTAH MUSEUM OF NATURAL
HISTORY, Salt Lake City, UT
**Native Voices: People
of the Great Basin and
Colorado Plateau**

Long-term. umnh.utah.edu/home

Gisèle Freund, *Frida in the Garden, Casa
Azul*, ca. 1951. From the exhibition *Frida
Kahlo: Art, Garden, Life* at The New
York Botanical Garden. Courtesy,
Throckmorton Fine Arts. Credit, Gisèle
Freund/IMEC/Fonds MCC.
www.nybg.org



BURKE MUSEUM OF NATURAL
HISTORY AND CULTURE,
UNIVERSITY OF WASHINGTON,
Seattle, WA
Pacific Voices
Long-term.
www.washington.edu/burkemuseum

MUSEUM OF HISTORY AND
INDUSTRY, Seattle, WA
**American Spirits: The Rise and
Fall of Prohibition**
Closes August 2.
Traveling. Organized by the National

PLAINS INDIAN MUSEUM,
Cody, WY
Plains Indian Museum
Reinstallation. Organized by the Buffalo Bill
Historical Center. www.bbhc.org

All events, exhibitions, and programs listed
are supported by grants from the
National Endowment for the Humanities
Division of Public Programs
400 7th Street, SW
Washington, DC 20506
(202) 606-8269
PublicPgms@neh.gov
Please contact the
host institution for exact dates and times.
For more information about NEH and its
programs, we invite you to visit our website at
www.neh.gov

NATIONAL ENDOWMENT
FOR THE HUMANITIES
WASHINGTON, D.C. 20506
OFFICIAL BUSINESS
PENALTY FOR PRIVATE USE, \$300