



**EXHIBITION OPENINGS**

**APRIL**

*April 1 to April 24*

ANGELO STATE UNIVERSITY,  
San Angelo, TX

**World War I and America**

**Traveling.** Organized by Literary Classics of the United States, Inc. [wwiamerica.org](http://wwiamerica.org)

*April 1 to April 24*

NOVA SOUTHEASTERN UNIVERSITY,  
Ft. Lauderdale, FL

**World War I and America**

**Traveling.**

*April 1 to April 24*

OELWEIN PUBLIC LIBRARY,  
Oelwein, IA

**World War I and America**

**Traveling.**

*April 8 to late November*

MINNESOTA HISTORICAL SOCIETY,  
St. Paul, MN

**WW1 America**

**Traveling.** Organized by the Minnesota Historical Society. [www.mnhs.org](http://www.mnhs.org)

**MAY**

*May 1 to May 25*

BRIDGETON FREE PUBLIC LIBRARY,  
Bridgeton, NJ

**World War I and America**

**Traveling.**

*May 1 to May 25*

POUGHKEEPSIE PUBLIC LIBRARY,  
Poughkeepsie, NY

**World War I and America**

**Traveling.**

*May 1 to May 25*

WILLIAM FOGG PUBLIC LIBRARY,  
Eliot, ME

**World War I and America**

**Traveling.**

*May 2*

THOMAS COLE NATIONAL  
HISTORIC SITE, Catskill, NY

**A Guest in the Home**

**Long-term.** [www.thomascole.org](http://www.thomascole.org)

*May 17 to June 30*

MARENGO COUNTY HISTORY  
AND ARCHIVE MUSEUM,  
Demopolis, AL

**Changing America**

**Traveling.** Organized by the American Library Association, in collaboration with the Smithsonian's National Museum of African American History and Culture and National Museum of American History. [www.ala.org](http://www.ala.org)

*May 17 to June 30*

RACINE PUBLIC LIBRARY,  
Racine, WI

**Changing America**

**Traveling.**

*May 26 to September 3*

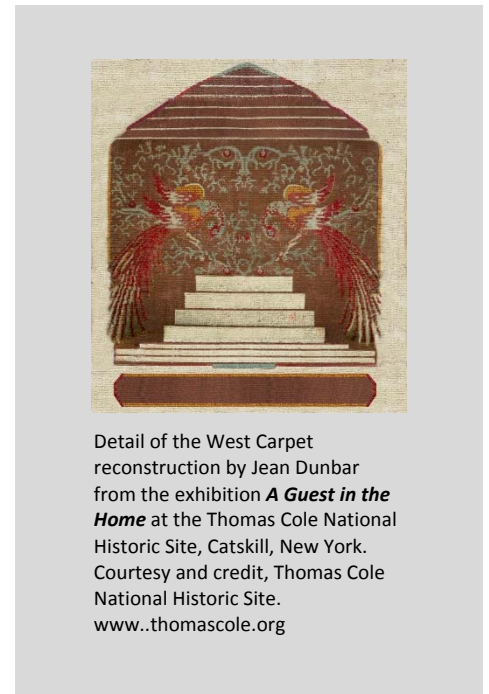
NEW-YORK HISTORICAL SOCIETY,  
New York, NY

**World War I and American Art**

**Traveling.** Organized by the Pennsylvania Academy of Fine Arts. [www.pafa.org](http://www.pafa.org)

**NEH ON THE ROAD**

ExhibitsUSA, a national touring exhibitions program of Mid-America Arts Alliance, has partnered with nationally recognized museums to adapt NEH-supported exhibitions for smaller institutions through the *NEH on the Road* initiative. Please contact the Mid-America Arts Alliance if you would like to host any of these exhibitions. Additional NEH on the Road exhibits are listed under the Ongoing Exhibitions Section. [www.nehontheroad.org](http://www.nehontheroad.org).



Detail of the West Carpet reconstruction by Jean Dunbar from the exhibition *A Guest in the Home* at the Thomas Cole National Historic Site, Catskill, New York. Courtesy and credit, Thomas Cole National Historic Site. [www.thomascole.org](http://www.thomascole.org)

*April 6 to May 25*

UNIVERSITY OF NEW ENGLAND  
ART GALLERY, Portland, ME

**Bandits & Heroes, Poets & Saints: Popular Art of the Northeast of Brazil**

**Traveling.** Based on an exhibition organized by Con/Vida - Popular Arts of the Americas.

*April 6 to May 25*

LOUISIANA'S OLD STATE CAPITOL,  
Baton Rouge, LA

**The Power of Children: Making a Difference**

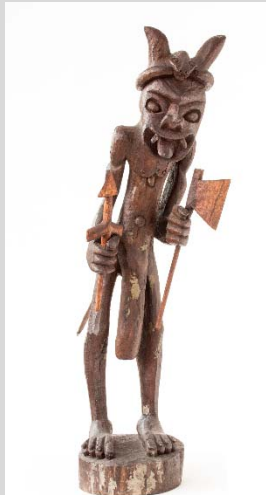
**Traveling.** Based on an exhibition organized by the Children's Museum of Indianapolis.

*April 6 to May 25*

ELMHURST HISTORICAL MUSEUM,  
Elmhurst, IL

**House and Home**

**Traveling.** Based on an exhibition organized by the National Building Museum.



Jorge Santos, *Exu, the Messenger Spirit*, Wood carving, 41", 1993, from the traveling exhibition *Bandits & Heroes, Poets & Saints: Popular Art of the Northeast of Brazil* at the University of New England Art Gallery, Portland, Maine. Courtesy, Con/Vida. [www.nehotr.org](http://www.nehotr.org)

April 6 to May 25

PARK CITY MUSEUM,  
Park City, UT

**Spirited: Prohibition in America**

Traveling. Based on an exhibition organized by the National Constitution Center.

April 6 to May 25

BRAZOS VALLEY MUSEUM OF  
NATURAL HISTORY, Bryan, TX

**Coney Island: Visions of an American Dreamland, 1861-2008**

Traveling. Organized by ExhibitsUSA. Based on an exhibition organized by Wadsworth Atheneum. [www.thewadsworth.org](http://www.thewadsworth.org)

June 16 to August 11

BRAZOS VALLEY MUSEUM OF  
NATURAL HISTORY, Bryan, TX

**House and Home**

Traveling. Based on an exhibition organized by the National Building Museum.

June 16 to August 11

BRANIGAN CULTURAL CENTER,  
Las Cruces, NM

**Spirited: Prohibition in America**

Traveling. Based on an exhibition organized by the National Constitution Center.

June 16 to August 11

YPSILANTI DISTRICT PUBLIC  
LIBRARY, Ypsilanti, MI

**Coney Island: Visions of an American Dreamland, 1861-2008**

Traveling. Based on an exhibition organized by Wadsworth Atheneum. [www.thewadsworth.org](http://www.thewadsworth.org)

**PROGRAMS AND  
EVENTS**

Ongoing

**Humanities in the Public Square**

As part of the NEH's Common Good initiative, twenty-one new grants will support community discussions of challenging contemporary issues, demonstrating the relevance of the humanities to our civic life. Humanities in the Public Square programs will be held at sites around the nation in 2017. [www.neh.gov/files/press-release/nehhipsgrants2015.pdf](http://www.neh.gov/files/press-release/nehhipsgrants2015.pdf)

**Reading Deeply in Community**

Reading and discussion programs organized by People & Stories/Gente y Cuentos. [www.peopleandstories.net](http://www.peopleandstories.net)

April

WEST END INTERIM LIBRARY, DC  
PUBLIC LIBRARY, Washington, DC

April

JUANITA E. THORNTON BRANCH,  
DC PUBLIC LIBRARY,  
Washington, DC

May

MARTIN LUTHER KING MEMORIAL  
LIBRARY, DC PUBLIC LIBRARY,  
Washington, DC

June

PELL CITY PUBLIC LIBRARY,  
Pell City, AL

June

CHARLOTTE MECKLENBURG  
LIBRARY, Charlotte, NC

June

SANTA CRUZ PUBLIC LIBRARY,  
Santa Cruz, CA

June

SIOUX CENTER PUBLIC LIBRARY,  
Sioux Center, IA

**BROADCASTS**

**APRIL**

(check local listings)

**The Jazz Loft According to**

**W. Eugene Smith** Written, produced, and directed by Sara Fishko. Premiering on Starz. [www.wnyc.org/jazzloftthemovie](http://www.wnyc.org/jazzloftthemovie)

**ONGOING EXHIBITIONS  
AND WEBSITES**

**EAST**

MYSTIC SEAPORT MUSEUM,  
Mystic, CT

**Voyaging in the Wake of the Whalers: The 38th Voyage of the Charles W. Morgan**

Long-term. [www.mysticseaport.org](http://www.mysticseaport.org)

NATIONAL BUILDING MUSEUM,  
Washington, DC

**House and Home**

Long-term. [www.nbm.org](http://www.nbm.org)

**SOLDIERS' HOME, Washington, DC  
President Lincoln's Cottage at the Soldiers' Home**

Long-term. Organized by the National Trust for Historic Preservation. [www.lincolncottage.org](http://www.lincolncottage.org)



Experience life at sea in the exhibition *All Hands on Deck: A Sailor's Life in 1812* at the USS Constitution Museum, Boston, Massachusetts. Courtesy, USS Constitution Museum.  
[www.ussconstitutionmuseum.org](http://www.ussconstitutionmuseum.org)

MAINE STATE MUSEUM,  
 Augusta, ME  
**At Home in Maine**  
 Long-term. [mainestatemuseum.org](http://mainestatemuseum.org)

MAINE HISTORICAL SOCIETY,  
 Portland, ME  
**Maine Memory Network**  
 Website. [www.mainememory.net](http://www.mainememory.net)

MAINE HUMANITIES COUNCIL,  
 Portland, ME  
**Local and Legendary: Maine in the Civil War**  
 Website. [civilwar.mainememory.net](http://civilwar.mainememory.net)

PORTLAND MUSEUM OF ART,  
 Portland, ME  
**Fine and Decorative Arts Collections**  
 Reinstallation. [www.portlandmuseum.org](http://www.portlandmuseum.org)

BALTIMORE MUSEUM OF ART,  
 Baltimore, MD  
**The American Wing**  
 Reinstallation. [www.artbma.org](http://www.artbma.org)

BALTIMORE MUSEUM OF ART,  
 Baltimore, MD  
**African Art Collection**  
 Reinstallation. [www.artbma.org](http://www.artbma.org)

BALTIMORE MUSEUM OF INDUSTRY,  
 Baltimore, MD  
**Garment Loft**  
 Long-term. [www.thebmi.org](http://www.thebmi.org)

BALTIMORE MUSEUM OF INDUSTRY,  
 Baltimore, MD  
**The Kids' Cannery**  
 Long-term. [www.thebmi.org](http://www.thebmi.org)

WALTERS ART MUSEUM,  
 Baltimore, MD  
**Egyptian Collection**  
 Reinstallation. [www.thewalters.org](http://www.thewalters.org)

WALTERS ART MUSEUM,  
 Baltimore, MD  
**Medieval Collection**  
 Reinstallation. [www.thewalters.org](http://www.thewalters.org)

ST. MARY'S CITY, VAN SWERINGEN SITE, St. Mary's City, MD  
**Van Sweringen Archaeological Site**  
 Site interpretation. Organized by Historic St. Mary's City Commission.  
[www.stmaryscity.org](http://www.stmaryscity.org)

BOSTON CHILDREN'S MUSEUM,  
 Boston, MA  
**Boston Black: A City Connects**  
 Long-term. [www.bostonkids.org](http://www.bostonkids.org)

COMMONWEALTH MUSEUM,  
 Boston, MA

**Our Common Wealth: The Massachusetts Experiment in Democracy**  
 Long-term. Organized by the Friends of the Commonwealth Museum.  
[www.sec.state.ma.us/mus/exhibits/permanent/our-common-wealth/our-common-wealth.html](http://www.sec.state.ma.us/mus/exhibits/permanent/our-common-wealth/our-common-wealth.html)

USS CONSTITUTION MUSEUM,  
 Boston, MA  
**All Hands on Deck: A Sailor's Life in 1812**  
 Long-term. Organized by the USS Constitution Museum Foundation, Inc.  
[www.ussconstitutionmuseum.org](http://www.ussconstitutionmuseum.org)

HARVARD UNIVERSITY,  
 Cambridge, MA  
**DoHistory**  
 Website. [www.dohistory.org](http://www.dohistory.org)

MOUNT AUBURN CEMETERY,  
 Cambridge, MA  
**Mount Auburn Cemetery: A New American Landscape**  
 Long-term. Organized by the Friends of Mount Auburn Cemetery. [www.mountauburn.org](http://www.mountauburn.org)

CONCORD MUSEUM, Concord, MA  
**"Why Concord?" The History of Concord, Massachusetts**  
 Long-term. [www.concordmuseum.org](http://www.concordmuseum.org)

POCUMTUCK VALLEY MEMORIAL ASSOCIATION, Deerfield, MA  
**Raid on Deerfield: The Many Stories of 1704**  
 Website. [1704.deerfield.history.museum](http://1704.deerfield.history.museum)

MARTHA'S VINEYARD MUSEUM,  
 Edgartown, MA  
**Enchanted Isle: The Story of Martha's Vineyard**  
 Long-term.  
[www.mvmuseum.org/permanent.php#enchantedisle](http://www.mvmuseum.org/permanent.php#enchantedisle)

MARTHA'S VINEYARD MUSEUM,  
 Edgartown, MA  
**Laura Jernegan: Girl on a Whaleship**  
 Website. [www.girlonawhaleship.org](http://www.girlonawhaleship.org)

HOLYOKE HERITAGE STATE PARK,  
CHILDREN'S MUSEUM AT  
HOLYOKE, WISTARIAHURST  
MUSEUM, Holyoke, MA

**Creating Holyoke:  
Immigrants' and Migrants'  
Search for Community**

Site interpretation. Organized by the  
Wistariahurst Museum/City of Holyoke.  
[www.creatingholyoake.org](http://www.creatingholyoake.org)

ARNOLD ARBORETUM OF  
HARVARD UNIVERSITY,  
Jamaica Plain, MA

**Science in the Pleasure  
Ground: An Exploration  
of Arboretum History**

Long-term. [www.arboretum.harvard.edu](http://www.arboretum.harvard.edu)

NEW BEDFORD WHALING  
MUSEUM, New Bedford, MA  
**From Pursuit to Preservation:  
The Global Story of Whales  
and Whaling**

Long-term.  
[www.whalingmuseum.org/explore/  
exhibitions/current/pursuit-to-preservation](http://www.whalingmuseum.org/explore/exhibitions/current/pursuit-to-preservation)

HANCOCK SHAKER VILLAGE,  
Pittsfield, MA

**Audio Tour**

Site interpretation.  
[www.hancockshakervillage.org](http://www.hancockshakervillage.org)

SPRINGFIELD TECHNICAL  
COMMUNITY COLLEGE,  
Springfield, MA  
**Shays' Rebellion and the  
Making of a Nation: From  
Revolution to Constitution**

Website. [www.shaysrebellion.stcc.edu](http://www.shaysrebellion.stcc.edu)

OLD STURBRIDGE VILLAGE,  
Sturbridge, MA  
**Farms, Families, and Change:  
New England Farming and  
Rural Life**

Site interpretation. [www.osv.org](http://www.osv.org)

Stained glass window designed by  
Kiki Smith and Deborah Gans at  
the **Museum at Eldridge Street**,  
New York, New York. Courtesy,  
the Museum at Eldridge Street.  
Credit, Peter Aaron/OTTO.  
[www.eldridgestreet.org](http://www.eldridgestreet.org)



STRAWBERRY BANKE,  
Portsmouth, NH  
**Crossroads of a  
Neighborhood in Change:  
The Corner Grocery Store at  
Strawbery Banke During WWII**

Long-term. [www.strawberybanke.org](http://www.strawberybanke.org)

STRAWBERRY BANKE,  
Portsmouth, NH  
**Becoming Americans:  
The Shapiro Story, 1898-1928**

Long-term. [www.strawberybanke.org](http://www.strawberybanke.org)

NEWARK MUSEUM, Newark, NJ  
**Picturing America**

Reinstallation. [www.newarkmuseum.org](http://www.newarkmuseum.org)

NEW YORK STATE MUSEUM,  
Albany, NY  
**A Mohawk-Iroquois Village**

Long-term. [www.nysm.nysed.gov](http://www.nysm.nysed.gov)

BROOKLYN CHILDREN'S MUSEUM,  
Brooklyn, NY

**World Brooklyn**

Long-term. [www.brooklynkids.org](http://www.brooklynkids.org)

BROOKLYN HISTORICAL SOCIETY,  
Brooklyn, NY  
**Crossing Borders, Bridging  
Generations: A Study of Mixed-  
Heritage Families in Brooklyn**

Website. [cbbg.brooklynhistory.org/about](http://cbbg.brooklynhistory.org/about)

BROOKLYN HISTORICAL SOCIETY,  
WEEKSVILLE HERITAGE CENTER,  
IRONDALE CENTER, Brooklyn, NY  
**In Pursuit of Freedom**

Long-term. Organized by the Brooklyn  
Historical Society. [www.brooklynhistory.org](http://www.brooklynhistory.org)

BROOKLYN NAVY YARD,  
Brooklyn, NY  
**Brooklyn Navy Yard:  
Past, Present, and Future**

Long-term. Organized by the Brooklyn Navy  
Yard Development Corporation.  
[www.bldg92.com](http://www.bldg92.com)

THOMAS COLE NATIONAL  
HISTORIC SITE, Catskill, NY  
**The Home and Studio of Thomas  
Cole, Founder of the Hudson  
River School of Art**

Long-term. [www.thomascole.org](http://www.thomascole.org)

THOMAS COLE NATIONAL  
HISTORIC SITE, Catskill, NY  
**Hudson River School Art Trail**

Website. [www.hudsonriverschool.org](http://www.hudsonriverschool.org)

CENTER FOR NEW AMERICAN  
MEDIA, INC., New York, NY  
**Past/Present**

Website. [www.pastpresent.org](http://www.pastpresent.org)

CHILDREN'S MUSEUM OF  
MANHATTAN, New York, NY  
**America to Zanzibar: Muslim  
Cultures Near and Far**

Closes December 31.  
Traveling. [cmom.org](http://cmom.org)



Candlestick telephone used by bootlegger Roy Olmstead, defendant in the landmark *Olmstead v. United States* wiretapping case, ca. 1920. From the exhibition *American Spirits: The Rise and Fall of Prohibition* at the National Constitution Center, Philadelphia, Pennsylvania. Courtesy, the Allen family. [Constitutioncenter.org](http://Constitutioncenter.org)

WNET.ORG, New York, NY  
**Mission US: A Revolutionary Way to Learn History**  
 Website. [www.mission-us.org](http://www.mission-us.org)

ROCHESTER MUSEUM AND SCIENCE CENTER, Rochester, NY  
**Expedition Earth**  
 Reinstallation. [www.rmssc.org](http://www.rmssc.org)

PHILIPSBURG MANOR, Sleepy Hollow, NY  
**Philipsburg Manorfsp**  
 Site interpretation. Organized by Historic Hudson Valley. [www.hudsonvalley.org](http://www.hudsonvalley.org)

LONG ISLAND MUSEUM OF AMERICAN ART, HISTORY, AND CARRIAGES, Stony Brook, NY  
**Going Places: How Horse-Drawn Vehicles Shaped American Life**  
 Long-term. [www.longislandmuseum.org](http://www.longislandmuseum.org)

LONG ISLAND MUSEUM OF AMERICAN ART, HISTORY, AND CARRIAGES, Stony Brook, NY  
**Streets of New York**  
 Long-term. [www.longislandmuseum.org](http://www.longislandmuseum.org)

LONG ISLAND MUSEUM OF AMERICAN ART, HISTORY, AND CARRIAGES, Stony Brook, NY  
**Driving for Sport and Pleasure**  
 Long-term. [www.longislandmuseum.org](http://www.longislandmuseum.org)

WTF, INC., Harrisburg, PA  
**ExplorePAHistory.com**  
 Website. [www.explorepahistory.com](http://www.explorepahistory.com)

JOSEPH PRIESTLEY HOME, Northumberland, PA  
**Joseph Priestley: Reason, Order, and Plainness**  
 Site interpretation. Organized by the Friends of Joseph Priestley Home. [www.josephpriestleyhouse.org](http://www.josephpriestleyhouse.org)

INDEPENDENCE SEAPORT MUSEUM, Philadelphia, PA  
**Home Port Philadelphia**  
 Long-term. [www.phillyseaport.org](http://www.phillyseaport.org)

CITY LORE, New York, NY  
**Poetic Voices of the Muslim World**  
 Website. Organized by City Lore, Inc. [www.pvmw.org](http://www.pvmw.org)

ELDRIDGE STREET SYNAGOGUE, New York, NY  
**Museum at Eldridge Street**  
 Site interpretation. Organized by the Eldridge Street Project. [www.eldridgestreet.org](http://www.eldridgestreet.org)

ELLIS ISLAND, New York, NY  
**Future in the Balance: Immigration, Public Health, and the Ellis Island Hospitals**  
 Long-term. Organized by the Save Ellis Island, Inc. [www.saveellisland.org](http://www.saveellisland.org)

INTREPID SEA-AIR-SPACE MUSEUM, New York, NY  
**City at Sea: USS Intrepid**  
 Site interpretation. [www.intrepidmuseum.org](http://www.intrepidmuseum.org)

LOWER EAST SIDE TENEMENT MUSEUM, New York, NY  
**97 Orchard Street Tenement Tours**  
 Long-term. [www.tenement.org](http://www.tenement.org)

LOWER EAST SIDE TENEMENT MUSEUM, New York, NY  
**103 Orchard Street Website**  
 Website. [103orchard.tenement.org/stories/103-orchard](http://103orchard.tenement.org/stories/103-orchard)

LOWER EAST SIDE TENEMENT MUSEUM, New York, NY  
**Shop Life**  
 Long-term. [www.tenement.org](http://www.tenement.org)

MOUNT VERNON HOTEL MUSEUM & GARDEN, New York, NY  
**The Abigail Adams Smith Museum as the Mount Vernon Hotel (1826-1833)**  
 Reinstallation. Organized by Colonial Dames of America. [www.mvhm.org](http://www.mvhm.org)

MUSEUM OF THE CITY OF NEW YORK, New York, NY  
**New York at Its Core**  
 Long-term. [mcny.org](http://mcny.org)

RUBIN MUSEUM OF ART, New York, NY  
**Explore Art: Life Through Himalayan Paintings**  
 Website. [exploreart.rma2.org](http://exploreart.rma2.org)

NATIONAL CONSTITUTION  
CENTER, Philadelphia, PA  
**American Spirits: The Rise and  
Fall of Prohibition**

Closes July 16.  
Traveling. [constitutioncenter.org](http://constitutioncenter.org)

NATIONAL MUSEUM OF AMERICAN  
JEWISH HISTORY, Philadelphia, PA  
**1917: How One Year Changed  
the World**

Closes July 16.  
Traveling. [www.nmajh.org](http://www.nmajh.org)

PHILADELPHIA MUSEUM OF ART,  
Philadelphia, PA  
**European Collections**

Reinstallation. [www.philamuseum.org](http://www.philamuseum.org)

PHILADELPHIA OUTDOOR  
SCULPTURE SITES,  
Philadelphia, PA

**Museum Without Walls**

Walking tour. Organized by the Association  
for Public Art. [associationforpublicart.org](http://associationforpublicart.org)

PLEASE TOUCH MUSEUM®,  
Philadelphia, PA

**Centennial Exploration**

Long-term. [www.pleasetouchmuseum.org](http://www.pleasetouchmuseum.org)

CARNEGIE MUSEUM OF NATURAL  
HISTORY, Pittsburgh, PA  
**Alcoa Foundation Hall of  
American Indians**

Long-term. [www.carnegiemnh.org](http://www.carnegiemnh.org)

CARNEGIE MUSEUM OF NATURAL  
HISTORY, Pittsburgh, PA  
**Walton Hall of Ancient Egypt**

Long-term. [www.carnegiemnh.org](http://www.carnegiemnh.org)

SENATOR JOHN HEINZ PITTSBURGH  
REGIONAL HISTORY CENTER,  
Pittsburgh, PA

**Pittsburgh: A Tradition  
of Innovation**

Long-term. [www.pghhistory.org](http://www.pghhistory.org)

The Robinson family home as it  
appeared when fugitive slaves  
found shelter here in the 1830s  
and 1840s from the exhibition

**Underground Railroad in  
Vermont** at the Rokeby Museum,  
Ferrisburgh, Vermont. Courtesy,  
Rokeby Museum.  
[www.rokeby.org](http://www.rokeby.org)



MUSEUM OF NEWPORT HISTORY,  
Newport, RI

**Museum of Newport History at  
the Brick Market**

Long-term. Organized by the Newport  
Historical Society and the Museum of Newport  
History. [www.newporthistorical.org](http://www.newporthistorical.org)

MUSEUM OF WORK AND CULTURE,  
Woonsocket, RI

**La Survivance: French-Canadians  
in Woonsocket, Rhode Island**

Long-term. Organized by the Rhode Island  
Historical Society. [www.rihs.org](http://www.rihs.org)

ROKEBY MUSEUM, Ferrisburgh, VT  
**Underground Railroad  
in Vermont**

Long-term. [www.rokeby.org](http://www.rokeby.org)

AMERICAN PRECISION MUSEUM,  
Windsor, VT

**Shaping America**

Long-term. [www.americanprecision.org](http://www.americanprecision.org)

**MIDWEST**

FIELD MUSEUM, Chicago, IL  
**Peoples of the Pacific: Traveling  
the Pacific and Pacific Spirits**

Long-term. [www.fieldmuseum.org](http://www.fieldmuseum.org)

FIELD MUSEUM, Chicago, IL  
**Africa**

Long-term. [www.fieldmuseum.org](http://www.fieldmuseum.org)

HULL-HOUSE MUSEUM,  
Chicago, IL

**Redefining Democracy:  
Jane Addams and the  
Hull-House Settlement**

Reinstallation. Organized by the University of  
Illinois at Chicago.  
[www.uic.edu/jaddams/hull](http://www.uic.edu/jaddams/hull)

NATIONAL MUSEUM OF MEXICAN  
ART, Chicago, IL

**Nuestras Historias: Stories of  
Mexican Identity from the  
National Museum of Mexican  
Art's Permanent Collection**

Reinstallation.  
[www.nationalmuseumofmexicanart.org](http://www.nationalmuseumofmexicanart.org)

NEWBERRY LIBRARY, Chicago, IL

**The Indians of the Midwest**

Website. [www.newberry.org](http://www.newberry.org)

CAHOKIA MOUNDS MUSEUM  
SOCIETY, Collinsville, IL

**Mark of the Mississippians**

Website. [www.archaeoexplorer.com/media](http://www.archaeoexplorer.com/media)

ILLINOIS STATE MUSEUM,  
Springfield, IL

**At Home in the Heartland**

Long-term. [www.museum.state.il.us](http://www.museum.state.il.us)

CONNER PRAIRIE MUSEUM,  
Fishers, IN

**1863 Civil War Journey:  
Raid on Indiana**

Long-term. [connerprairie.org](http://connerprairie.org)

LEVI COFFIN STATE HISTORIC SITE,  
Fountain City, IN

**Souls Seeking Safety:  
Interpreting the Underground  
Railroad Experience in Indiana**

**Long-term.** Organized by the Indiana State  
Museum Foundation, Inc.  
[www.indianamuseum.org](http://www.indianamuseum.org)

CHILDREN'S MUSEUM OF  
INDIANAPOLIS, Indianapolis, IN

**The Power of Children:  
Making a Difference**

**Long-term.**  
[www.childrensmuseum.org/themuseum/  
powerofchildren/html/index.html](http://www.childrensmuseum.org/themuseum/powerofchildren/html/index.html)

MISSISSIPPI RIVER MUSEUM AND  
AQUARIUM, Dubuque, IA

**River Discovery**

**Long-term.** Organized by the Dubuque County  
Historical Society.  
[www.mississippirivermuseum.com](http://www.mississippirivermuseum.com)

THE HENRY FORD MUSEUM,  
Dearborn, MI

**Your Place in Time:  
20th-Century America**

**Long-term.** [www.thehenryford.org](http://www.thehenryford.org)

THE HENRY FORD MUSEUM,  
Dearborn, MI

**Heroes of the Sky:  
Adventures in Early Flight**

**Long-term.** [www.thehenryford.org](http://www.thehenryford.org)

THE HENRY FORD MUSEUM,  
Dearborn, MI

**Made in America: The History of  
the American Industrial System**

**Long-term.** [www.thehenryford.org](http://www.thehenryford.org)

DETROIT INSTITUTE OF ARTS,  
Detroit, MI

**Great Art: New Start**

**Reinstallation.** [www.dia.org](http://www.dia.org)

MICHIGAN STATE UNIVERSITY,  
East Lansing, MI

**Voices from Detroit:  
American Black Journal Online**

**Website.** [www.matrix.msu.edu/~abj](http://www.matrix.msu.edu/~abj)

The Schumachers were the  
"founding family" of 470 Hopkins  
Street. German immigrants Albert  
and Henriette built the house in  
1888 for themselves and their  
grown children. Here are Martha  
Schumacher and her nephews  
Albert and Todd McMillan,  
about 1904, from the exhibition  
**Open House** at the Minnesota  
Historical Society, St. Paul,  
Minnesota. Courtesy, Minnesota  
Historical Society. [www.mnhs.org](http://www.mnhs.org)



GRAND RAPIDS PUBLIC MUSEUM,  
Grand Rapids, MI

**Newcomers: The People of  
This Place**

**Long-term.** [www.grmuseum.org](http://www.grmuseum.org)

GRAND RAPIDS PUBLIC MUSEUM,  
Grand Rapids, MI

**Anishinabek: The People of  
This Place**

**Long-term.** [www.grmuseum.org](http://www.grmuseum.org)

INTERNATIONAL WOLF CENTER,  
Ely, MN

**Wolves and Humans:  
Coexistence, Competition,  
and Conflict**

**Long-term.** Organized by the Science Museum  
of Minnesota. [www.wolf.org](http://www.wolf.org)

MILL CITY MUSEUM,  
Minneapolis, MN

**Mill City Museum**

**Long-term.** Organized by the Minnesota  
Historical Society. [www.millcitymuseum.org](http://www.millcitymuseum.org)

MINNEAPOLIS INSTITUTE OF ART,  
Minneapolis, MN

**Material Journeys: African Art  
in Motion**

**Reinstallation.** Organized by the Minneapolis  
Society of Fine Arts. [www.artsmia.org](http://www.artsmia.org)

MILLE LACS INDIAN MUSEUM,  
Onamia, MN

**Learn About Our Past: The Story  
of the Mille Lacs Band of Ojibwe**

**Long-term.** Organized by the Minnesota  
Historical Society. [www.mnhs.org](http://www.mnhs.org)

LANDMARK CENTER, St. Paul, MN

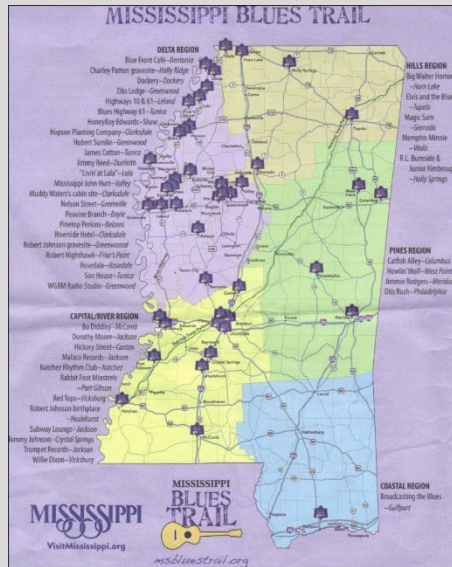
**Uncle Sam Worked Here**

**Long-term.** Organized by the Minnesota  
Landmarks. [www.landmarkcenter.org](http://www.landmarkcenter.org)

MINNESOTA HISTORICAL SOCIETY,  
St. Paul, MN

**Open House**

**Long-term.** [www.mnhs.org](http://www.mnhs.org)



Map of the Mississippi Blues Trail from the Mississippi Blues Trail Commission's 350-mile driving trail project, based in Indianola, Mississippi. Courtesy, Mississippi Blues Trail Commission. [www.msbluestrail.org](http://www.msbluestrail.org)

MINNESOTA HISTORY CENTER,  
St. Paul, MN  
**Minnesota's Greatest  
Generation: The Depression,  
The War, The Boom**  
Long-term. Organized by the Minnesota  
Historical Society.  
[www.mnhs.org/people/mnngg/index.htm](http://www.mnhs.org/people/mnngg/index.htm)

MINNESOTA PUBLIC RADIO,  
St. Paul, MN  
**On Being**  
Website. [www.onbeing.org](http://www.onbeing.org)

UNIVERSITY OF NEBRASKA, BOARD  
OF REGENTS, Lincoln, NE  
**The Journals of the Lewis and  
Clark Expedition Online Edition**  
Website. [lewisandclarkjournals.unl.edu](http://lewisandclarkjournals.unl.edu)

CINCINNATI ART MUSEUM,  
Cincinnati, OH  
**The Cincinnati Wing: The Story  
of Art in the Queen City**  
Long-term. [www.cincinnatiartmuseum.org](http://www.cincinnatiartmuseum.org)

KENT STATE UNIVERSITY, VISITORS  
CENTER, Kent, OH  
**Making Meaning of May 4th:  
The Kent State Shootings in  
American History**  
Long-term. Organized by Kent State  
University. [www.kent.edu](http://www.kent.edu)

OHIO STATE UNIVERSITY,  
Newark, OH  
**The Ancient Ohio Trail:  
A Media-Enhanced Cultural  
Heritage Experience**  
Website. [www.ancientohiotrail.org](http://www.ancientohiotrail.org)

SOUTH DAKOTA STATE HISTORICAL  
SOCIETY, CULTURAL HERITAGE  
CENTER, Pierre, SD  
**Proving Up**  
Long-term.  
[history.sd.gov/Museum/exhibits/gallery.aspx](http://history.sd.gov/Museum/exhibits/gallery.aspx)

CHIPPEWA VALLEY MUSEUM,  
Eau Claire, WI  
**Farm Life: A Century of  
Change for Farm Families  
and Their Neighbors**  
Long-term. [www.cvmuseum.com](http://www.cvmuseum.com)

CHIPPEWA VALLEY MUSEUM,  
Eau Claire, WI  
**Changing Currents: Reinventing  
the Chippewa Valley**  
Long-term. [www.cvmuseum.com](http://www.cvmuseum.com)

MILWAUKEE PUBLIC MUSEUM,  
Milwaukee, WI  
**A Tribute to Survival**  
Long-term. [www.mpm.edu](http://www.mpm.edu)

**SOUTH**  
CARL ELLIOTT HOUSE MUSEUM,  
Jasper, AL  
**Carl Elliott House**  
Long-term. Organized by Beville State  
Community College.  
[www.bscc.edu/community-resources/  
carl-elliott-house-museum](http://www.bscc.edu/community-resources/carl-elliott-house-museum)

FLORIDA MUSEUM OF NATURAL  
HISTORY, Gainesville, FL  
**South Florida:  
People and Environments**  
Long-term. Organized by the University of  
Florida. [www.flmnh.ufl.edu](http://www.flmnh.ufl.edu)

MISSION SAN LUIS, Tallahassee, FL  
**San Luis de Apalachee:  
Interpretation of a 17th-Century  
Spanish Mission**  
Long-term. Organized by the Florida  
Division of Historical Resources.  
[www.missionsanluis.org](http://www.missionsanluis.org)

ATLANTA HISTORY CENTER,  
Atlanta, GA  
**Turning Point: The American  
Civil War**  
Long-term. [www.atlhist.org](http://www.atlhist.org)

SOCIETY OF BIBLICAL LITERATURE,  
Decatur, GA  
**Bible Odyssey: Exploring People,  
Places, and Passages**  
Website. [www.bibleodyssey.com](http://www.bibleodyssey.com)

300-MILE DRIVING TRAIL,  
Indianola, MS  
**Mississippi Blues Commission  
Blues Trail**  
Site interpretation. Organized by the  
Mississippi Blues Commission.  
[www.msbluestrail.org](http://www.msbluestrail.org)



SMITH ROBERTSON MUSEUM &  
CULTURAL CENTER, Jackson, MS  
**Field to Factory: Afro-American  
Migration, 1915–1940**  
Long-term.

LAUREN ROGERS MUSEUM OF ART,  
Laurel, MS  
**By Native Hands: Woven  
Treasures from the Lauren  
Rogers Museum of Art**  
Reinstallation. [www.lirma.org](http://www.lirma.org)

LEVINE MUSEUM OF THE NEW  
SOUTH, Charlotte, NC  
**Cotton Fields to Skyscrapers:  
Charlotte and the Carolina  
Piedmont in the New South**  
Long-term. [www.museumofthenewsouth.org](http://www.museumofthenewsouth.org)

MUSEUM OF THE CHEROKEE  
INDIAN, Cherokee, NC  
**Emissaries of Peace: The 1762  
Cherokee/British Delegations**  
Long-term. [www.cherokeemuseum.org](http://www.cherokeemuseum.org)

HERMITAGE, Hermitage, TN  
**The Hermitage, Andrew Jackson,  
and a Changing America**  
Site interpretation. [www.thehermitage.com](http://www.thehermitage.com)

EAST TENNESSEE HISTORICAL  
SOCIETY, Knoxville, TN  
**Voices of the Land: The People  
of East Tennessee**  
Long-term. [www.east-tennessee-history.org](http://www.east-tennessee-history.org)

NATIONAL CIVIL RIGHTS MUSEUM,  
Memphis, TN  
**Lorraine Motel Exhibits**  
Long-term. [www.civilrightsmuseum.org](http://www.civilrightsmuseum.org)

MONTICELLO, Charlottesville, VA  
**Mulberry Row and the  
Landscape of Slavery at  
Jefferson's Monticello**  
Site interpretation. Organized by the Thomas  
Jefferson Memorial Foundation.  
[www.monticello.org](http://www.monticello.org)

Image of the Hopi House from the  
website *Nature, Culture, and History  
at the Grand Canyon*, Arizona State  
University, Tempe, Arizona. Courtesy  
and credit, Paul Hirts.  
[grandcanyonhistory.clas.asu.edu](http://grandcanyonhistory.clas.asu.edu)



MONTICELLO, Charlottesville, VA  
**Domestic Life and the Plantation  
Community at Jefferson's  
Monticello**  
Site interpretation. Organized by the Thomas  
Jefferson Memorial Foundation.  
[www.monticello.org](http://www.monticello.org)

MONTICELLO VISITOR CENTER,  
Charlottesville, VA  
**To Try All Things**  
Long-term. Organized by the Thomas Jefferson  
Memorial Foundation. [www.monticello.org](http://www.monticello.org)

GEORGE MASON UNIVERSITY,  
Fairfax, VA  
**Hidden Histories on America's  
Front Lawn**  
Website. [mobile.mallhistory.us](http://mobile.mallhistory.us)

GEORGE MASON UNIVERSITY,  
Fairfax, VA  
**Gulag: Many Days, Many Lives**  
Website. [gulaghhistory.org](http://gulaghhistory.org)

R. R. MOTON HIGH SCHOOL,  
Farmville, VA  
**The Moton School Story:  
Children of Courage**  
Long-term. Organized by the Robert R. Moton  
Museum. [www.motonmuseum.org](http://www.motonmuseum.org)

MAYMONT, Richmond, VA  
**In Service and Beyond:  
Domestic Work and Life in  
a Gilded Age Mansion**  
Long-term. Organized by the Maymont  
Foundation. [www.maymont.org](http://www.maymont.org)

VALENTINE RICHMOND HISTORY  
CENTER, Richmond, VA  
**Creating History:  
The Valentine Family and  
the Valentine Museum**  
Long-term. [thevalentine.org](http://thevalentine.org)

VIRGINIA HISTORICAL SOCIETY,  
Richmond, VA  
**An American Turning Point:  
The Civil War in Virginia**  
Website. Organized by the Virginia  
Sesquicentennial of the American Civil War  
Commission.  
[www.vahistorical.org/civilwar/introduction.htm](http://www.vahistorical.org/civilwar/introduction.htm)

COLONIAL WILLIAMSBURG,  
Williamsburg, VA  
**From Subjects to Citizens:  
Williamsburg and the  
American Revolution**  
Website. [www.ouramericanrevolution.org](http://www.ouramericanrevolution.org)



*Empress of China fan*, ca. 1784, from the exhibition **Chinese American: Exclusion/Inclusion** at the Chinese Historical Society of America, San Francisco, California. Courtesy, New-York Historical Society. [chsa.org](http://chsa.org)

## SOUTHWEST

BISBEE MINING & HISTORICAL MUSEUM, Bisbee, AZ

### **Bisbee: Urban Outpost on the Frontier**

**Long-term.** [www.bisbeemuseum.org](http://www.bisbeemuseum.org)

FORT APACHE HISTORIC PARK, Fort Apache, AZ

### **Transitions in the Apache World: The Fort Apache Legacy**

**Long-term.** Organized by the White Mountain Apache Tribe. [www.wmat.nsn.us/fortapachepark.htm](http://www.wmat.nsn.us/fortapachepark.htm)

DESERT BOTANICAL GARDEN, Phoenix, AZ

### **Plants and People of the Sonoran Desert**

**Long-term.** [www.dbg.org](http://www.dbg.org)

HEARD MUSEUM, Phoenix, AZ

### **Remembering Our Indian School Days: The Boarding School Experience**

**Long-term.** [www.heard.org](http://www.heard.org)

ARIZONA STATE UNIVERSITY, Tempe, AZ

### **Nature, Culture, and History at the Grand Canyon**

**Website.** [grandcanyonhistory.clas.asu.edu](http://grandcanyonhistory.clas.asu.edu)

ARIZONA STATE MUSEUM, Tucson, AZ

### **Paths of Life: American Indians of the Southwest**

**Long-term.** Organized by the University of Arizona. [www.statemuseum.arizona.edu](http://www.statemuseum.arizona.edu)

MAXWELL MUSEUM OF ANTHROPOLOGY, Albuquerque, NM

### **Ancestors**

**Long-term.** [www.unm.edu/~maxwell](http://www.unm.edu/~maxwell)

MAXWELL MUSEUM OF ANTHROPOLOGY, Albuquerque, NM

### **People of the Southwest**

**Long-term.** [www.unm.edu/~maxwell](http://www.unm.edu/~maxwell)

MUSEUM OF INDIAN ARTS AND CULTURE, Santa Fe, NM

### **Here, Now, and Always**

**Long-term.** Organized by the Museum of New Mexico Foundation. [www.miaclab.org](http://www.miaclab.org)

EL CAMINO REAL INTERNATIONAL HERITAGE CENTER, Socorro, NM

### **Traveling el Camino Real: Caminando el Camino Real**

**Long-term.** Organized by the Museum of New Mexico. [www.nmmonuments.org](http://www.nmmonuments.org)

A:SHIWI A:WAN MUSEUM AND HERITAGE CENTER, Zuni, NM

### **Hawikku: Echoes from Our Past**

**Long-term.** [ashiwi-museum.org](http://ashiwi-museum.org)

OKLAHOMA HISTORY CENTER, Oklahoma City, OK

### **We Are Who We Were**

**Long-term.** Organized by the Oklahoma Historical Society. [www.okhistory.org](http://www.okhistory.org)

BOB BULLOCK TEXAS STATE HISTORY MUSEUM, Austin, TX

### **La Belle: The Ship That Changed History**

**Long-term.** [www.thestoryoftexas.com](http://www.thestoryoftexas.com)

BOB BULLOCK TEXAS STATE HISTORY MUSEUM, Austin, TX

### **Purchased Lives: The American Slave Trade from 1808 to 1865**

**Closes July 9.**

**Traveling.** Organized by the Historic New Orleans Collection. [www.hnoc.org](http://www.hnoc.org)

## WEST

UNIVERSITY OF ALASKA MUSEUM, Fairbanks, AK

### **Rose Berry Alaskan Art Gallery**

**Reinstallation.** [www.uaf.edu/museum](http://www.uaf.edu/museum)

PRATT MUSEUM, Homer, AK

### **Kachemak Bay, Alaska: An Exploration of People and Place**

**Reinstallation.** [www.prattmuseum.org](http://www.prattmuseum.org)

FORT ROSS STATE HISTORIC PARK, Jenner, CA

### **Rotchev House Museum**

**Long-term.** Organized by the Fort Ross Interpretive Association. [www.fortrossinterpretive.org](http://www.fortrossinterpretive.org)

FOWLER MUSEUM AT UCLA, Los Angeles, CA

### **Intersections: World Arts, Local Lives**

**Reinstallation.** [www.fowler.ucla.edu](http://www.fowler.ucla.edu)

OAKLAND MUSEUM OF CALIFORNIA, Oakland, CA

### **Coming to California: The Gallery of California History**

**Long-term.** [www.museumca.org](http://www.museumca.org)

PERALTA HACIENDA HISTORICAL  
PARK, Oakland, CA

**Becoming California,  
Becoming America**

Site interpretation. Organized by the Friends  
of Peralta Hacienda Historical Park.  
www.peraltahacienda.org

MUSEUM OF HISTORY AND ART,  
ONTARIO, Ontario, CA

**Road Ways**

Long-term. Organized by the Museum of  
History and Art. www.ontario.ca/museum

ASIAN ART MUSEUM OF SAN  
FRANCISCO, San Francisco, CA

**Permanent Collections Galleries**

Long-term. www.asianart.org

CHINESE HISTORICAL SOCIETY OF  
AMERICA, San Francisco, CA

**Chinese American:  
Exclusion/Inclusion**

Long-term. Organized by the New-York  
Historical Society. chsa.org

COIT TOWER, RINCON ANNEX,  
CITY COLLEGE, MARINE MARITIME  
MUSEUM, San Francisco, CA

**New Deal Murals of  
San Francisco**

Walking tour. Organized by KQED, Inc.  
www.kqed.org

MOLLY BROWN HOUSE MUSEUM,  
Denver, CO

**Molly Brown: The Biography of  
a Changing Nation**

Long-term. www.mollybrown.org

KONA COFFEE FARM, Captain  
Cook, HI

**Kona Coffee Living  
History Farm: A Glimpse  
into the Lifestyle of Kona's  
Coffee Pioneers**

Site interpretation. Organized by the Kona  
Historical Society. www.konahistorical.org

KONA HISTORIC RANCH,  
Kealahou, HI

**H. N. Greenwell Store Museum:  
Experience 19th-Century Life in  
the Hawaiian Kingdom**

Site interpretation. Organized by the Kona  
Historical Society. www.konahistorical.org

C. M. RUSSELL MUSEUM,  
Great Falls, MT

**The Bison: American Icon, Heart  
of Plains Indian Culture  
[temporarily closed]**

Long-term. Organized by the Trigg C. M.  
Russell Foundation. cmrussell.org

HIGH DESERT MUSEUM, Bend, OR  
**By Hand Through Memory:**

**Native People of the  
Columbia River Plateau in  
the Twentieth Century**

Long-term. www.highdesertmuseum.org

UTAH MUSEUM OF NATURAL  
HISTORY, Salt Lake City, UT

**Native Voices: People  
of the Great Basin and  
Colorado Plateau**

Long-term. umnh.utah.edu/home

BURKE MUSEUM OF NATURAL  
HISTORY AND CULTURE,  
UNIVERSITY OF WASHINGTON,  
Seattle, WA

**Pacific Voices**

Long-term.  
www.washington.edu/burkemuseum

PLAINS INDIAN MUSEUM,  
Cody, WY

**Plains Indian Museum**

Reinstallation. Organized by the Buffalo Bill  
Historical Center. www.bbhc.org

All events, exhibitions, and programs listed are supported by grants from the National Endowment for the Humanities, Division of Public Programs, 400 7<sup>th</sup> Street, SW, Washington, DC 20506, (202) 606-8269, PublicPgms@neh.gov. Please contact the host institution for exact dates and times. For more information about NEH and its programs, we invite you to visit our website at www.neh.gov

---

NATIONAL ENDOWMENT  
FOR THE HUMANITIES  
WASHINGTON, D.C. 20506  
**OFFICIAL BUSINESS**  
PENALTY FOR PRIVATE USE, \$300