



NATIONAL
ENDOWMENT
FOR THE
HUMANITIES

CLIMATE SMART HUMANITIES ORGANIZATIONS

Tatiana Ausema, Senior Program Officer
NEH Office of Challenge Programs

June 25, 2024



Stefanie Walker,
Director of the Office of
Challenge Programs

AGENDA

About the Climate Smart Humanities
Organizations Program

What Are Climate Action and Adaptation
Plans

Project Development

Applying for a Challenge Grant

Review Criteria and Review Process

Application Tips and Resources

OUTCOMES

Be ready to apply as an organization or as part of a consortium

Work with potential applicants as a consultant or facilitator

Share information about the program with existing networks, funders, and constituents

Start the conversation about climate smart strategic planning within your organization and/or community

Climate Smart Humanities Organizations

Office of Challenge Programs

As energy costs rise and natural disasters become more frequent, humanities organizations - such as museums, libraries, archives, historic sites, and colleges and universities - face an enormous task: to anticipate operational, physical, and financial impacts of climate-related events on their institutions, while also reducing their own impact on the environment. Climate Smart Humanities Organizations supports these efforts by offering federal matching funds for comprehensive organizational assessments that lead to strategic climate action and adaptation plans.

Through the Climate Smart program, your humanities organization can undertake activities such as energy audits, risk assessments, and meetings with consultants. The resulting climate smart plan helps you establish goals and prioritize actions that reduce your organization's impacts **on** the environment through mitigation and vulnerability **from** extreme events through adaptation. Together, mitigation and adaptation can inform a robust road map that addresses climate challenges, protects assets, and facilitates collaboration between internal and external stakeholders. Strategic planning for climate change is an essential part of sustaining humanities organizations' operations and activities—becoming climate smart.

Grant Snapshot

Maximum award amount: \$300,000

Matching required: Yes, 1:1 non-federal, third-party gifts must be raised by March 31, 2026

Funding Opportunity for: Organizations

Expected output: Climate action and adaptation planning document

Period of performance: Up to 24 months

Application available: May 29, 2024

Optional draft due: August 9, 2024

Deadline: September 18, 2024

Expected notification date: April 30, 2025

Project start date: May 1, 2025 – September 1, 2025

CLIMATE SMART HUMANITIES ORGANIZATIONS: A NEW NEH CHALLENGE PROGRAM

Majority of Texans Fear Grid Collapse This Summer

| ENERGY |

AUTHOR: RA Staff | June 24, 2024 | 1 min. read



WEATHER

Additional cooling centers to open in Jacksonville as part of city's new extreme heat plan

When the heat index reaches 108 degrees, cooling centers will open at all city libraries and community centers in Jacksonville.



Weather Video

'Catastrophic flooding' In Upper Midwest prompts evacuations as record-breaking heat wave broils the West and mid-Atlantic

By Dalia Faheid, CNN
© 5 minute read - Updated 5:54 PM EDT, Sun June 23, 2024

f X e

'Catastrophic flooding' forces evacuations in Iowa

Video Ad Feedback

0:00 - Source: CNN

CLIMATE-INFORMED STRATEGIC PLANNING



ENVIRONMENTAL ALLIANCE

Santa Barbara County Museums

M PRESIDENT'S COMMISSION ON CARBON NEUTRALITY UNIVERSITY OF MICHIGAN



nbi new buildings institute

Culture Over Carbon

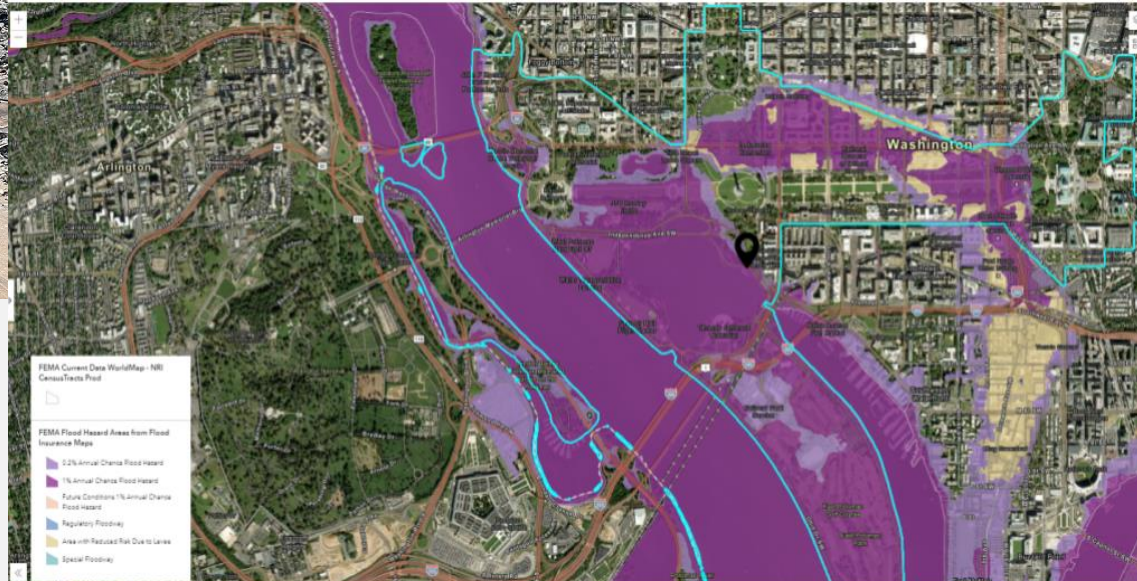
Understanding the Impact of Museums' Energy Use

Prepared by:
New Buildings Institute

Authors:
Webly Bowles, AIA
Mischa Egolf
Alexi Miller, PE
Bryce Seymour
Liepa Braciulyte

September 2023

CLIMATE-INFORMED STRATEGIC PLANNING

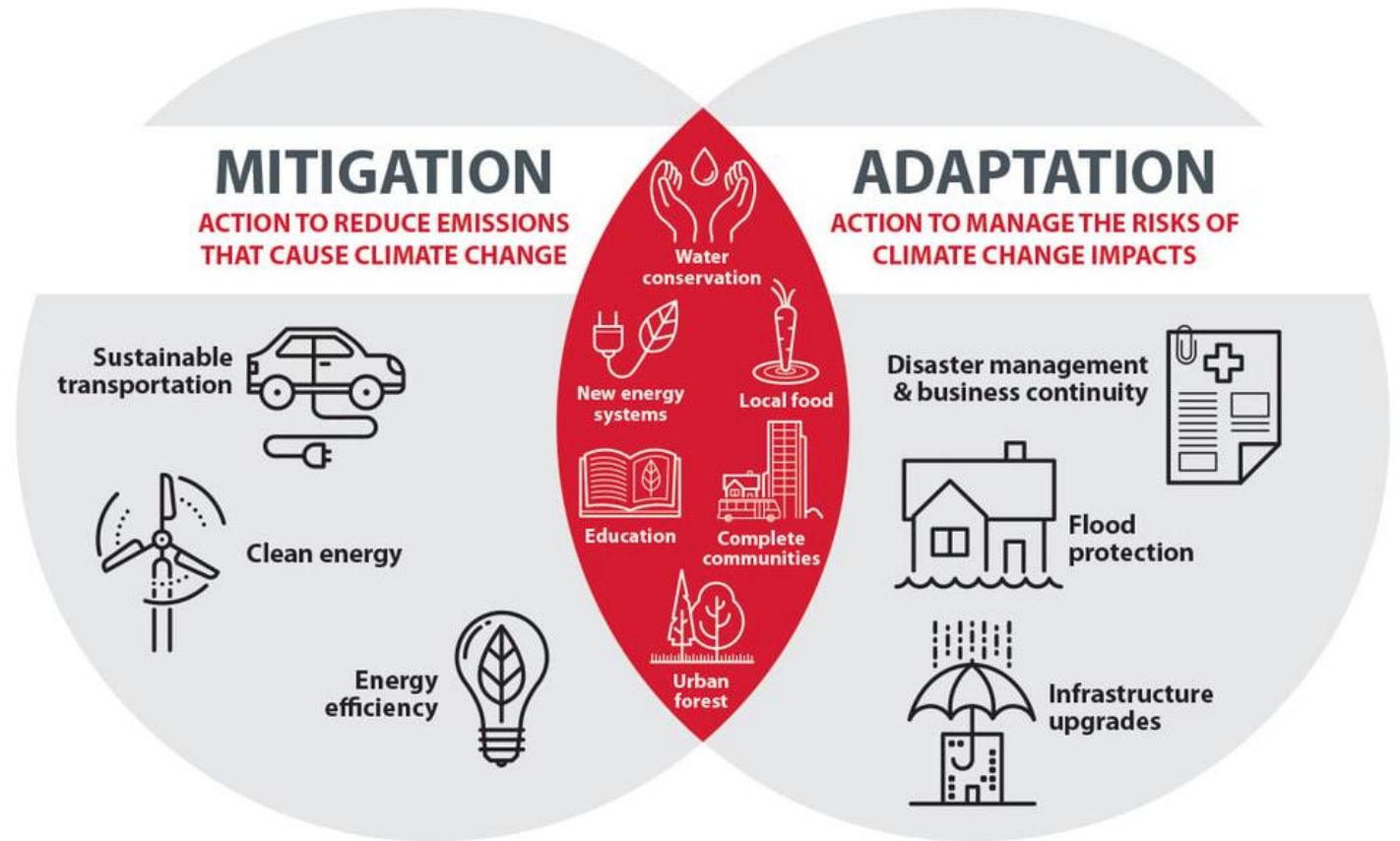


CLIMATE-INFORMED STRATEGIC PLANNING: OUTCOMES



MITIGATION AND ADAPTATION

Building Climate Resilience



MITIGATION

Comprehensive energy audits of an organization's building(s), land use, utilities, operations, and facilities

Calculating the organization's carbon footprint, including energy sources, transportation, material use, and supplies

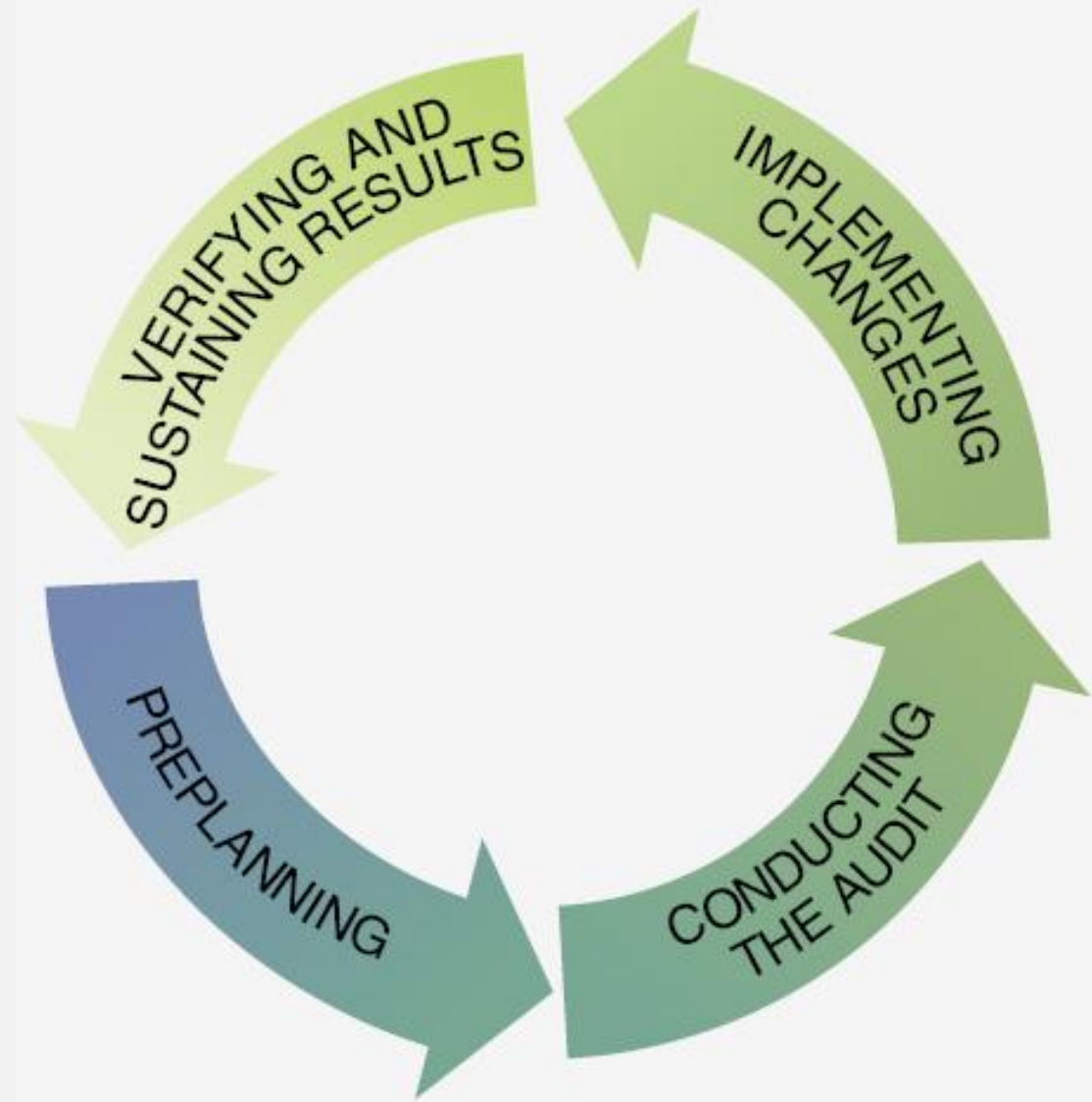
Testing of existing HVAC, natural gas, water, and other systems to improve efficiency

Installation of energy, waste, or carbon footprint monitoring and sub-metering equipment to measure consumption



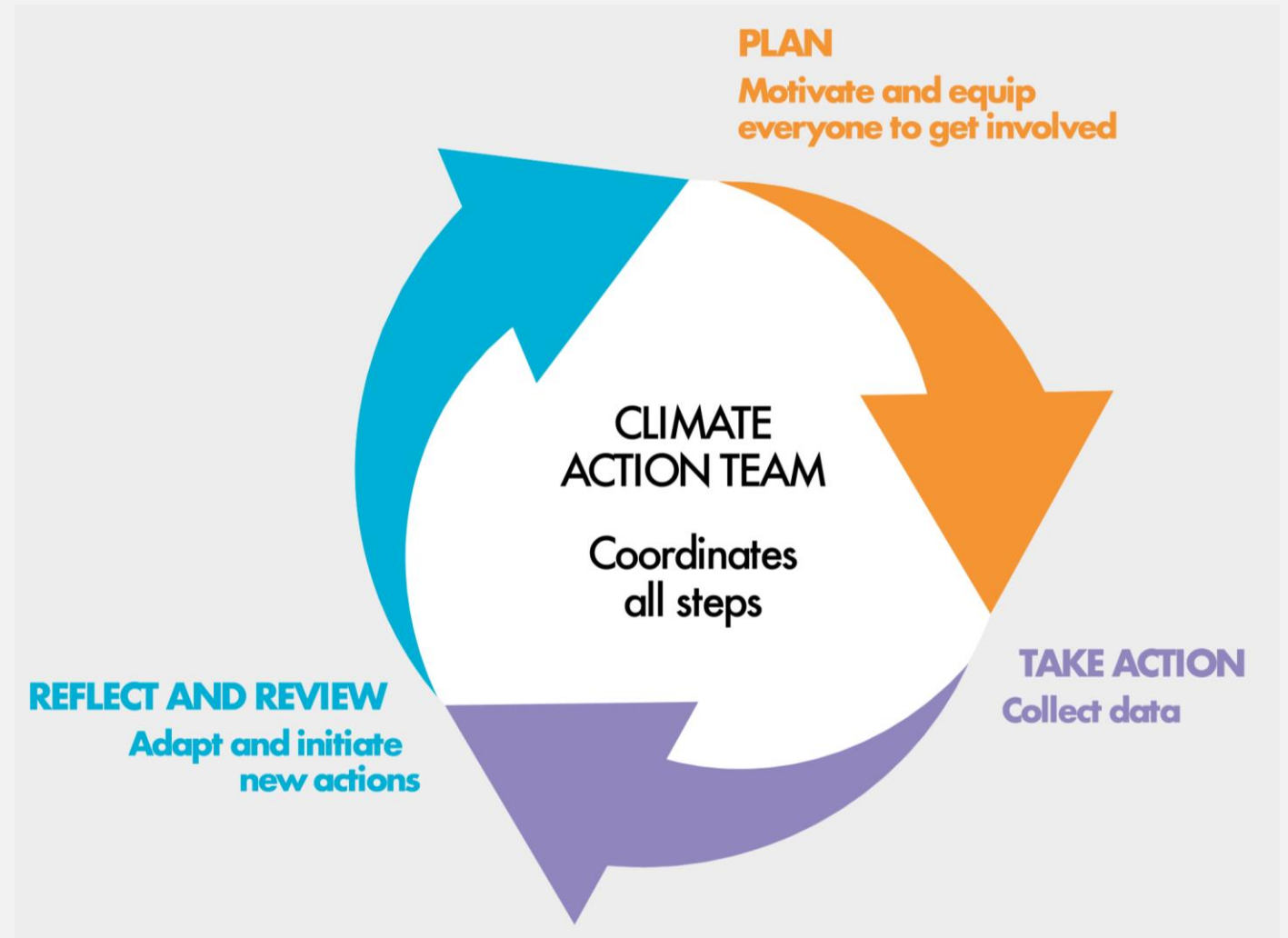
RESOURCES FOR MITIGATION ASSESSMENTS

- Reach out to your local energy company to see what kind of services they offer
- Explore the Department of Energy's Energy Star Portfolio Manager or Environmental Protection Agency's Greenhouse Gas Inventory tool
- Consider an ASHRAE level 1, 2, or 3 energy audit
- Search for local climate action plans published by your state, municipality, or other government organizations



YOUR CLIMATE ACTION PLAN

- Evaluating alternative energy sources, such as solar, geothermal, wind
- Identifying building improvements that would result in increased operational efficiencies and lower energy use
- Landscape improvements to support better environmental conditions and offset carbon producing-activities
- Encouraging lower-carbon transportation options for visitors, staff, and operations such as bicycle and pedestrian access, public transportation, and ride sharing
- Establishing organizational recycling, composting, reuse, and water reduction plans



ADAPTATION

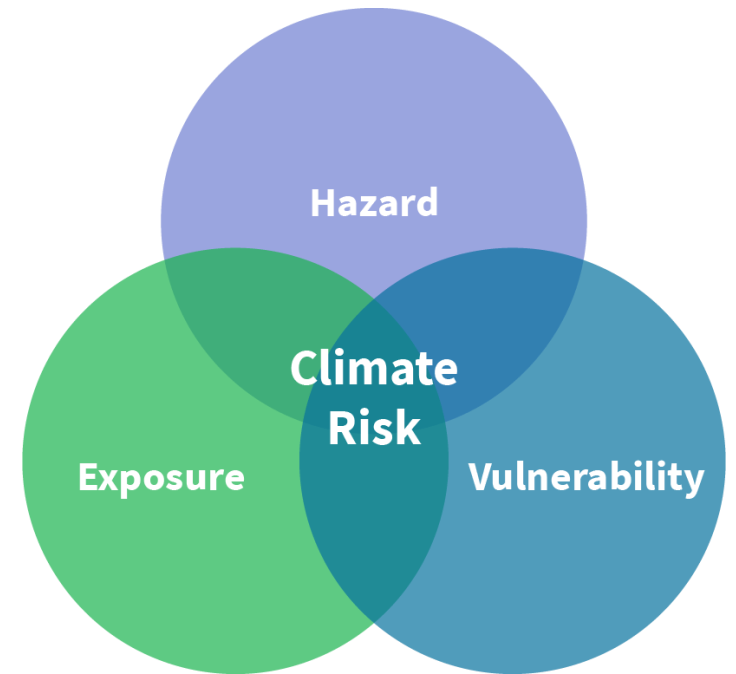
Examining location-specific risks and hazards

Assessing buildings and grounds to determine capacity to withstand current and future climatic events

Evaluating the impact of changing environmental conditions on programs and operations, such as timing and location of events, operating hours, and seasonal programming

Collecting data to record trends in temperature, weather, or other climate-related events over time and anticipating future events

Assessing current emergency and continuity of operation plans to align with climate smart strategic planning and support the humanities mission of the organization



RESOURCES FOR RISK AND VULNERABILITY ASSESSMENTS

- Explore the U.S. Climate Resilience toolkit to assess current and future local hazards
- Seek out planning resources for your institution type, for example, dPlan for cultural and civic institutions, or the National Park Service's Primer on Disaster Preparedness, Management, and Response
- Connect with local first responders and emergency managers to learn about local resources and partnership opportunities



Climate Resilience Resources for Cultural Heritage



Preserving Our Heritage For Future Generations

Cultural Resources are the heritage that communities seek to protect and preserve in a changed and changing climate. No matter your role, what it is you are caring for, the size of your institution, or the amount of available assets, resilience in the face of escalating climate change is essential. Engaging Cultural Resource stewards in climate resilience is critical since you are in a unique position of trust and responsibility within the community and as such have a powerful role to play in effecting positive change.

The climate is exhibiting the cumulative effects of over 250 years of pollutants pumped into the air and the warming has resulted in numerous negative impacts such as extreme temperatures and increased drought and wildfires. These impacts have diminished the earth's ability to absorb the added carbon and as our knowledge of the warming climate evolves, we are beginning to understand the long-term consequences.

There are different perspectives of how to respond to the changing climate. Some may believe that the Earth is a living organism and it is important to maintain a balance between the Sun and the Earth in respect for natural resources. Others may believe that activities where natural resources are leveraged are acceptable such as using the Sun for solar. No matter your opinion, there is an opportunity for cultural resources and their communities to consider the impacts of a changing climate and if appropriate, use the Resources.

The Resources aim to change and broaden the approach to how cultural resources can be made sustainable and resilient in the face of our changing climate. It is meant to encourage a critical change in the way we think about efforts of preservation and adaptation and seeks to expand the two-way relationship and collaborative actions between cultural resources and communities.



YOUR CLIMATE ADAPTATION PLAN

- Developing conceptual plans to retrofit, relocate, or strengthen existing buildings, systems, and landscaping
- Considering climate smart water management, such as reduction of impervious surfaces, and water recycling/reuse efforts that capture rainfall and mitigate water damage to humanities-centered buildings, collections, and programming
- Establishing emergency and continuity of operation plans and training for staff, volunteers, and visitors
- Development of mutual aid networks of related humanities organizations in a geographic area
- Establishing community partnerships that support the organization's adaptation and resilience efforts



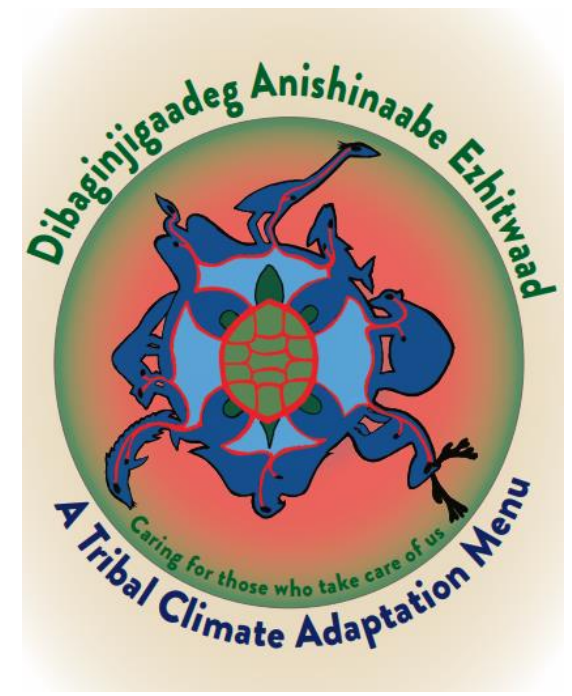
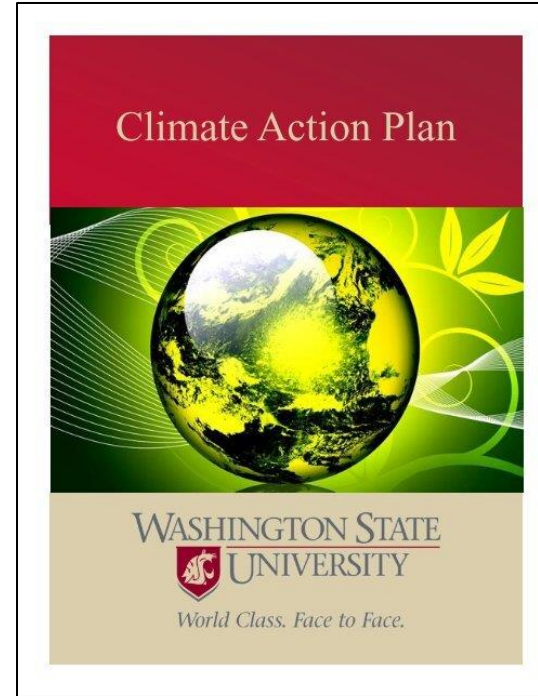
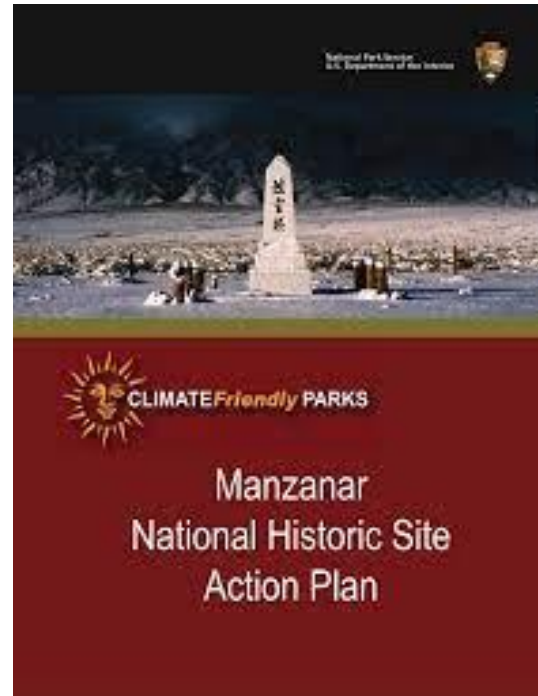
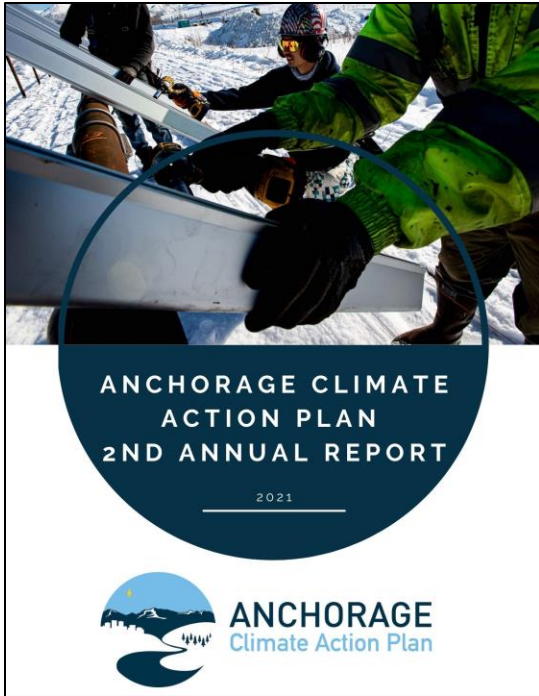
Blackfeet Climate Change Adaptation Plan

BLACKFEET NATION

April 2018

blackfeetclimatechange.com





YOUR CLIMATE SMART STRATEGIC PLAN

CONSORTIUMS

- All members must be in the humanities
- Might share resources, training, and develop plans to work together beyond the grant period
- One lead organization should submit the application, but members should submit letters of commitment and brief institutional profiles





HUMANITIES ORGANIZATIONS

Under Section 3(a) of the National Foundation on the Arts and the Humanities Act of 1965, as amended, “The term ‘humanities’ includes, but is not limited to, the study of the following: language, both modern and classical; linguistics; literature; history; jurisprudence; philosophy; archaeology; comparative religion; ethics; the history, criticism and theory of the arts; those aspects of the social sciences which have humanistic content and employ humanistic methods; and the study and application of the humanities to the human environment with particular attention to reflecting our diverse heritage, traditions, and history and to the relevance of the humanities to the current conditions of national life.”



Aerial View of Greenbelt, September 1939
Library of Congress

© DONALD BAER, SURVEYS INC., N.Y.C.



ELIGIBLE APPLICANTS

- U.S. nonprofit organizations with 501(c)(3) tax-exempt status
- Accredited public and 501(c)(3) higher education institutions
- State and local governmental agencies
- Federally recognized Native American tribal governments
- Must demonstrate a connection with the humanities





To receive federal matching funds, recipients must raise \$1 of nonfederal, third-party funds for every \$1 requested from NEH



Your total project budget should include the funds requested from NEH plus the required match



Your request should take into consideration project activities, number of participating organizations, and fundraising capabilities



Successful applicants must certify a minimum of 25% of the required match prior to starting project activities

MATCHING REQUIREMENTS

HOW DO YOU FUNDRAISE FOR STRATEGIC PLANNING?

- Engage your board and community
- Look for local grants and private foundations
- You are not required to have all gifts raised at the time of the application
- All gifts must be raised by March 31, 2026
- Refer to Matching Federal Funds Guidelines:
<https://www.neh.gov/grants/manage/federal-matching-funds-guidelines>



DEVELOPING YOUR APPLICATION

- Read the NOFO on the NEH website
- Involve the whole team in the planning and grant writing process
- Include detailed information about long-term strategic planning, fundraising efforts, previous projects, and how the outcomes and deliverables will benefit your institution, humanities research, and/or the public



PROJECT ACTIVITIES AND METHODOLOGY

- Consider the assessments and activities your team wants to undertake during the two-year grant period
- What types of consultants, equipment, and time will be required for each assessment? How will it inform the final strategic plan?
- Who is responsible for managing each part of the process, and what other stakeholders might need to be consulted?



ALL APPLICATIONS MUST INCLUDE:

Project narrative (10 pages)

Work plan

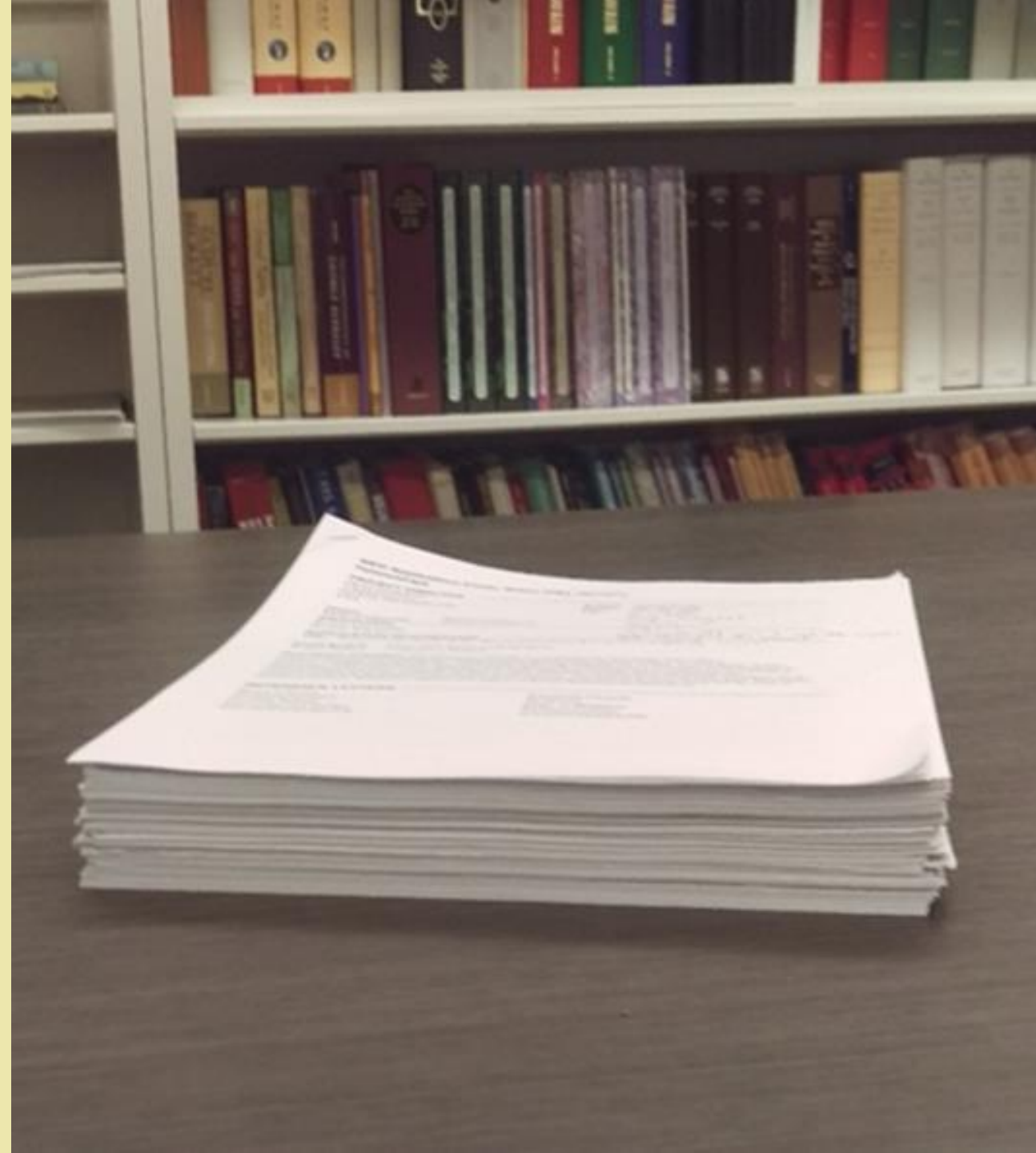
Research and related budget

Institutional profile

Resumes for key personnel

Letters of commitment or support

Pay close attention to page limits, formatting, and required attachments. Applications that do not meet the stated guidelines may be declared ineligible



General Information

Document Type:	Grants Notice	Version:	Synopsis 1
Funding Opportunity Number:	20240912-CLI	Posted Date:	May 29, 2024
Funding Opportunity Title:	Climate Smart Humanities Organizations	Last Updated Date:	May 29, 2024
Opportunity Category:	Discretionary	Original Closing Date for Applications:	Sep 18, 2024
Opportunity Category Explanation:		Current Closing Date for Applications:	Sep 18, 2024
Funding Instrument Type:	Grant	Archive Date:	
Category of Funding Activity:	Humanities (see "Cultural Affairs" in CFDA)	Estimated Total Program Funding:	\$ 2,500,000
Category Explanation:		Award Ceiling:	\$300,000
Expected Number of Awards:	20	Award Floor:	\$1
CFDA Number(s):	45.130 -- Promotion of the Humanities Challenge Grants		
Cost Sharing or Matching Requirement:	Yes		

APPLICATION SUBMISSION: GRANTS.GOV

- Ensure your SAM.gov and Grants.gov registrations and passwords are current. NEH will not grant deadline extensions for lack of registration. Registration in all systems, including SAM.gov and Grants.gov, may take up to one month to complete.
- Submit your application as early as possible and confirm submission on Grants.gov. NEH cannot accept late applications or add materials after the deadline.

How to Complete the Supplementary Cover Sheet

3. Project Funding

What to include:

Outright Funds

Enter \$0. Challenge Grants do not include outright funds.

Federal Match

Enter the total amount of Challenge funds requested from NEH.

Total from NEH

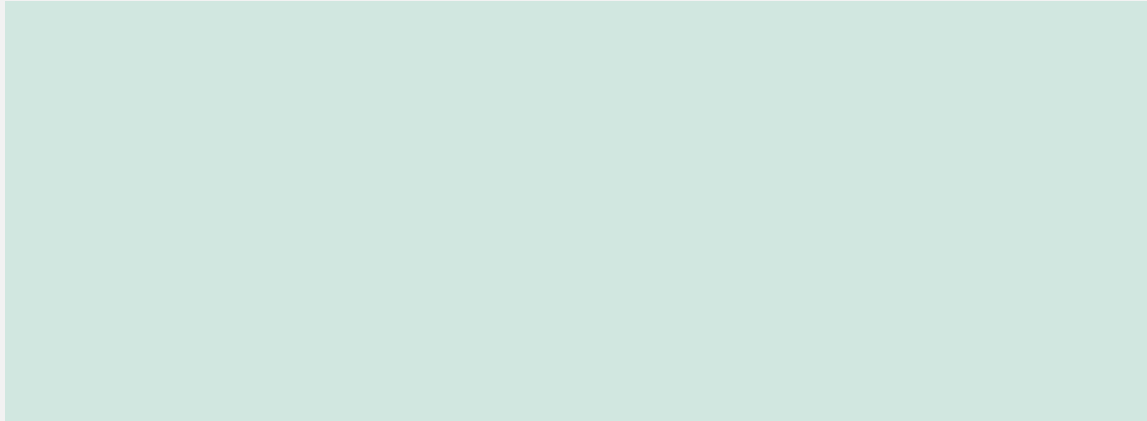
Enter the same as the total amount of Challenge funds requested from NEH

Cost Sharing

Enter the total matching funds to be raised according to the 1:1, 3:1, or 4:1 ratio

Total Project Costs

Enter the total from NEH + Cost Sharing



How to Complete the Supplementary Cover Sheet

3. Project Funding

Example:

Outright Funds

\$0

Federal Match

\$500,000

Total from NEH

\$500,000

Cost Sharing

\$1,500,000

Total Project Costs

\$2,000,000

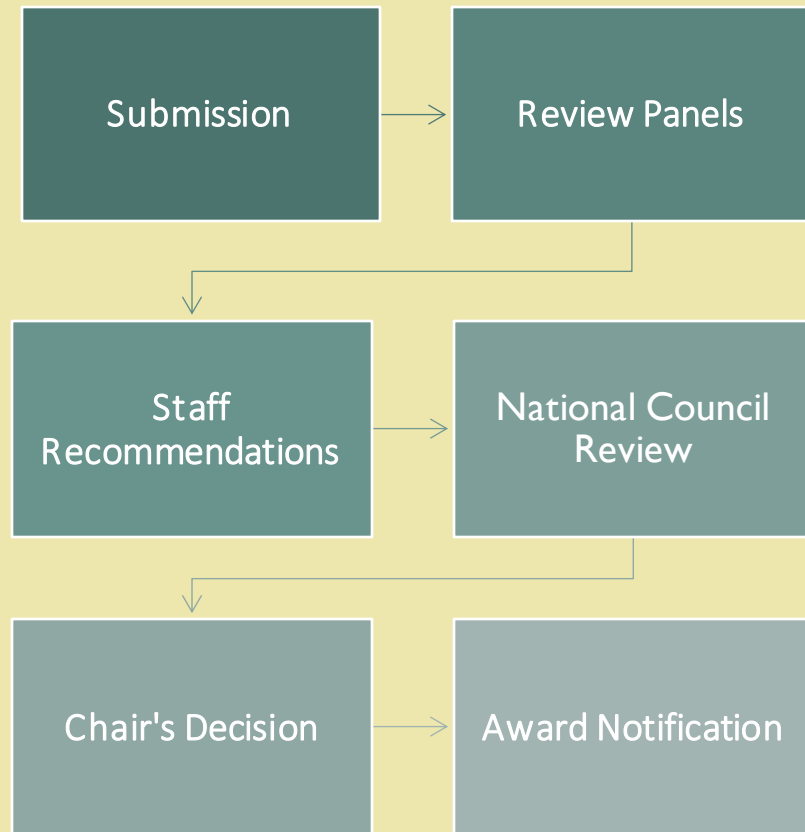


REVIEW CRITERIA

- Humanities significance and impact
- Institutional commitment
- Quality of the plan
- Work plan and budget
- Quality of the project team
- Plan assessment, dissemination, and next steps



NEH REVIEW PROCESS



1. NEH Staff review applications for eligibility and completeness
2. NEH uses peer review process to evaluate all eligible and complete applications
3. Peer reviewers evaluate applications according to review criteria
4. NEH staff make recommendations to the National Council on the Humanities
5. The National Council meets, then the Chair considers advice made by the review process and makes funding decisions



Share this information with your networks and others who may be interested, either as an applicant or funder



Reach out to a Program Officer with a short description of your project in the early stages of development



Carefully read the Notice of Funding Opportunity, FAQs, and Policy Guidance



Involve stakeholders (fundraising staff, administration, outside consultants) in the planning and grant writing process



Send a draft to challenge@neh.gov for comments by August 9, 2024



Request panelist comments after awards are announced

Questions?

NEH staff are available by phone or email to answer questions and provide technical assistance!

Sign up for our newsletter: www.neh.gov/signup

challenge@neh.gov

202-606-8309

Grant Snapshot

Maximum award amount: \$300,000

Matching required: Yes, 1:1 non-federal, third-party gifts must be raised by March 31, 2026

Funding Opportunity for: Organizations

Expected output: Climate action and adaptation planning document

Period of performance: Up to 24 months

Application available: May 29, 2024

Optional draft due: August 9, 2024

Deadline: September 18, 2024

Expected notification date: April 30, 2025

Project start date: May 1, 2025 – September 1, 2025