



EXHIBITION OPENINGS



Joseph Pulitzer portrait. From the documentary *Joseph Pulitzer: Voice of the People* airing on PBS April 12 (check local listings). Credit, Getty Images. www.josephpulitzerfilm.com

NEH ON THE ROAD

NEH on the Road is an initiative of the Division of Public Programs—in cooperation with Mid-America Arts Alliance—to extend the reach of NEH-funded, large-scale exhibitions. Smaller versions of these exhibitions, supported by specially designed education guides and program materials, travel to institutions in underserved areas of the country. Please contact the Mid-America Arts Alliance if you would like to host any of these exhibitions. Additional NEH on the Road exhibits are listed under the Ongoing Exhibitions and Websites Section. www.nehontheroad.org.

April 6 to May 25

RUSSELL LIBRARY FOR POLITICAL RESEARCH & STUDIES, Athens, GA

The Power of Children: Making a Difference

Traveling. Based on an exhibition organized by the Children's Museum of Indianapolis.

April 6 to May 25

MUSEUM OF DANISH AMERICA, Elk Horn, IA

Jacob A. Riis and His Photographs: Revealing New York's Other Half

Traveling. Based on an exhibition organized by the Museum of the City of New York.

April 6 to May 25

CHIPPEWA VALLEY MUSEUM, Eau Claire, WI

Spirited: Prohibition in America

Traveling. Based on an exhibition organized by the National Constitution Center.

April 6 to May 25

POWELL GARDENS, Kingsville, MO
Frida Kahlo's Garden

Traveling. Based on an exhibition organized by the New York Botanical Garden.

APRIL

April 13 to September 22

SENATOR JOHN HEINZ PITTSBURGH REGIONAL HISTORY CENTER, Pittsburgh, PA

The Vietnam War

Traveling. Organized by the New-York Historical Society. www.nyhistory.org

MAY

May 16

BROOKLYN HISTORICAL SOCIETY, Brooklyn, NY

Taking Care of Brooklyn: Stories of Sickness and Health

Long-term. www.brooklynhistory.org

JUNE

June 8 to September 29

NEW YORK BOTANICAL GARDEN, Bronx, NY

The Living Art of Roberto Burle Marx

Traveling. www.nybg.org

June 16 to September 29

LOS ANGELES COUNTY MUSEUM OF ART, Los Angeles, CA

Beyond Line: The Art of Korean Writing

Temporary. Organized by Museum Associates. www.lacma.org

April 6 to May 25

MUSEUM OF THE MISSISSIPPI
DELTA, Greenwood, MS
**For All The World To See:
Visual Culture and the
Struggle for Civil Rights**

Traveling. Based on an exhibition organized
by the University of Maryland, Baltimore
County.

April 6 to May 25

PARK CITY MUSEUM,
Park City, UT
**Coney Island: Visions of an
American Dreamland, 1861–2008**

Traveling. Based on an exhibition organized
by Wadsworth Atheneum.

June 16 to August 11

SIoux CITY PUBLIC MUSEUM,
Sioux City, IA
**Bandits & Heroes, Poets &
Saints: Popular Art of the
Northeast of Brazil**

Traveling. Based on an exhibition organized
by Con/Vida - Popular Arts of the Americas.

June 16 to August 11

NORTH MUSEUM OF NATURAL
HISTORY AND SCIENCE,
Lancaster, PA
**The Power of Children:
Making a Difference**

Traveling.

June 16 to August 11

WOOD COUNTY HISTORICAL
SOCIETY, Bowling Green, OH
**Jacob A. Riis and His
Photographs: Revealing
New York's Other Half**

Traveling.

June 16 to August 11

COMMUNITY MEMORIAL
MUSEUM OF SUTTER COUNTY,
Yuba City, CA
Frida Kahlo's Garden

Traveling.

June 16 to August 11

THE CIVIL WAR MUSEUM,
Kenosha, WI
**For All The World To See:
Visual Culture and the
Struggle for Civil Rights**

Traveling.

June 16 to August 11

HASTINGS MUSEUM OF
NATURAL & CULTURAL
HISTORY, Hastings, NE
**Coney Island: Visions of an
American Dreamland, 1861–2008**

Traveling.

June 21 to September 29

FRIST CENTER FOR THE VISUAL
ARTS, Nashville, TN
**Monsters & Myths: Surrealism
and War in the 1930s and 1940s**

Traveling. Organized by the Baltimore
Museum of Art. artbma.org

PROGRAMS AND EVENTS

Becoming American

Viewing and discussion programs organized
by City Lore, Inc. citylore.org
April to June

Literature and Medicine: Humanities at the Heart of Health Care

Reading and discussion programs organized
by the Maine Humanities Council.
mainehumanities.org
April to June

Newest Americans

Public programs organized by Rutgers State
University. newestamericans.com
April to June

Oregon Humanities Community Conversations 2017–20

Discussion programs organized by the Oregon
Council for the Humanities.
www.oregonhumanities.org
April to June

Third Coast Conversations: Dialogues about Water

Public programs organized by the Michigan
Humanities Council.
www.michiganhumanities.org
April to June

BROADCASTS

APRIL

April 12 (check local listings)

Joseph Pulitzer: Voice of the People

Directed, written, and produced by Oren
Rudavsky. www.josephpulitzerfilm.com

MAY

May 29 (check local listings)

Korea: The Never-Ending War

Jeff Bieber and Dalton Delan for WETA, and
Stephen Gong for Asian American Media
(CAAM). Ken Chowder, writer. John Maggio,
director. www.pbs.org/show/korea-never-
ending-war

ONGOING EXHIBITIONS AND WEBSITES

EAST

MYSTIC SEAPORT MUSEUM,
Mystic, CT

Voyaging in the Wake of the Whalers: The 38th Voyage of the Charles W. Morgan

Long-term. www.mysticseaport.org

NATIONAL BUILDING MUSEUM,
Washington, DC

House and Home

Long-term. www.nbm.org

NATIONAL MUSEUM OF AFRICAN ART, SMITHSONIAN INSTITUTION, Washington, DC

Striking Iron: The Art of African Blacksmiths

Closes October 20.

Traveling. Organized by the Fowler Museum of Cultural History, University of California, Los Angeles. www.fowler.ucla.edu

SOLDIERS' HOME, Washington, DC
President Lincoln's Cottage at the Soldiers' Home

Long-term. Organized by the National Trust for Historic Preservation.
www.lincolncottage.org

MAINE STATE MUSEUM, Augusta, ME

At Home in Maine

Long-term. mainestatemuseum.org

MAINE HISTORICAL SOCIETY, Portland, ME

Maine Memory Network

Website. www.mainememory.net

MAINE HUMANITIES COUNCIL, Portland, ME

Local and Legendary: Maine in the Civil War

Website. civilwar.mainememory.net

PORTLAND MUSEUM OF ART, Portland, ME

Fine and Decorative Arts Collections

Reinstallation. www.portlandmuseum.org

BALTIMORE MUSEUM OF ART, Baltimore, MD

The American Wing

Reinstallation. www.artbma.org

BALTIMORE MUSEUM OF ART, Baltimore, MD

African Art Collection

Reinstallation. www.artbma.org

BALTIMORE MUSEUM OF INDUSTRY, Baltimore, MD

The Kids' Cannery

Long-term. www.thebmi.org

BALTIMORE MUSEUM OF INDUSTRY, Baltimore, MD

Garment Loft

Long-term. www.thebmi.org

WALTERS ART MUSEUM, Baltimore, MD

Egyptian Collection

Reinstallation. www.thewalters.org

WALTERS ART MUSEUM, Baltimore, MD

Medieval Collection

Reinstallation. www.thewalters.org

ST. MARY'S CITY, VAN SWERINGEN SITE, St. Mary's City, MD

Van Sweringen

Archaeological Site

Site interpretation. Organized by Historic St. Mary's City Commission.
www.stmaryscity.org

BOSTON CHILDREN'S MUSEUM, Boston, MA

Boston Black: A City Connects

Long-term. www.bostonkids.org

COMMONWEALTH MUSEUM, Boston, MA

Our Common Wealth: The Massachusetts

Experiment in Democracy

Long-term. Organized by the Friends of the Commonwealth Museum.
www.sec.state.ma.us

USS CONSTITUTION MUSEUM, Boston, MA

All Hands on Deck: A Sailor's Life in 1812

Long-term. www.ussconstitutionmuseum.org

HARVARD UNIVERSITY, Cambridge, MA

DoHistory

Website. www.dohistory.org

MOUNT AUBURN CEMETERY, Cambridge, MA

Mount Auburn Cemetery: A New American Landscape

Long-term. www.mountauburn.org

CONCORD MUSEUM, Concord, MA
"Why Concord?" The History of Concord, Massachusetts

Long-term. www.concordmuseum.org

POCUMTUCK VALLEY MEMORIAL ASSOCIATION, Deerfield, MA

Impressions from a Lost World

Website. www.dinotracksdiscovery.org

POCUMTUCK VALLEY MEMORIAL ASSOCIATION, Deerfield, MA

Raid on Deerfield: The Many Stories of 1704

Website. 1704.deerfield.history.museum

MARTHA'S VINEYARD MUSEUM, Edgartown, MA

Laura Jernegan: Girl on a Whaleship

Website. www.girlonawhaleship.org

MARTHA'S VINEYARD MUSEUM, Edgartown, MA

Enchanted Isle: The Story of Martha's Vineyard

Long-term.

www.mvmuseum.org/permanent.php#enchantedisle

HOLYOKE HERITAGE STATE PARK, CHILDREN'S MUSEUM AT

HOLYOKE, WISTARIAHURST MUSEUM, Holyoke, MA

Creating Holyoke: Immigrants' and Migrants'

Search for Community

Site interpretation. Organized by the Wistariahurst Museum/City of Holyoke.
www.creatingholyoake.org

ARNOLD ARBORETUM OF HARVARD UNIVERSITY, Jamaica Plain, MA

Science in the Pleasure Ground: An Exploration of Arboretum History

Long-term. www.arboretum.harvard.edu

NEW BEDFORD WHALING
MUSEUM, New Bedford, MA
**From Pursuit to Preservation:
The Global Story of Whales
and Whaling**

Long-term.
[www.whalingmuseum.org/explore/exhibitions/
current/pursuit-to-preservation](http://www.whalingmuseum.org/explore/exhibitions/current/pursuit-to-preservation)

HANCOCK SHAKER VILLAGE,
Pittsfield, MA

Audio Tour

Site interpretation.
www.hancockshakervillage.org

PLIMOTH PLANTATION,
Plymouth, MA

Along the Shores of Change

Site interpretation. www.plimoth.org

SPRINGFIELD TECHNICAL
COMMUNITY COLLEGE,
Springfield, MA

**Shays' Rebellion and the
Making of a Nation: From
Revolution to Constitution**

Website. www.shaysrebellion.stcc.edu

OLD STURBRIDGE VILLAGE,
Sturbridge, MA

**Farms, Families, and Change:
New England Farming and
Rural Life**

Site interpretation. www.osv.org

STRAWBERRY BANKE,
Portsmouth, NH
**Crossroads of a Neighborhood
in Change: The Corner
Grocery Store at Strawberry
Banke During WWII**

Long-term. www.strawberrybanke.org

STRAWBERRY BANKE,
Portsmouth, NH
**Becoming Americans: The
Shapiro Story, 1898-1928**

Long-term. www.strawberrybanke.org

NEWARK MUSEUM, Newark, NJ
Picturing America

Reinstallation. www.newarkmuseum.org

General Douglas MacArthur
inspecting troops of the 24th
Infantry on his arrival at Kimpo
airfield for a tour of the
battlefront. From the
documentary *Korea: The Never-
Ending War* airing on PBS May 29
(check local listings).

Courtesy, National Archives.
[www.pbs.org/show/korea-never-
ending-war](http://www.pbs.org/show/korea-never-ending-war)



NEW YORK STATE MUSEUM,
Albany, NY

A Mohawk-Iroquois Village

Long-term. www.nysm.nysed.gov

BROOKLYN CHILDREN'S MUSEUM,
Brooklyn, NY

World Brooklyn

Long-term. www.brooklynkids.org

BROOKLYN HISTORICAL SOCIETY,
Brooklyn, NY

**Crossing Borders, Bridging
Generations: A Study of Mixed-
Heritage Families in Brooklyn**

Website. cbbg.brooklynhistory.org/about

BROOKLYN HISTORICAL SOCIETY,
Brooklyn, NY

Waterfront Exhibition:

Water Log and Visitor Vistas

Website. www.brooklynhistory.org

BROOKLYN HISTORICAL SOCIETY,
WEEKSVILLE HERITAGE CENTER,
IRONDALE CENTER, Brooklyn, NY

In Pursuit of Freedom

Long-term. Organized by the Brooklyn
Historical Society. www.brooklynhistory.org

BROOKLYN NAVY YARD,
Brooklyn, NY

**Brooklyn Navy Yard: Past,
Present, and Future**

Long-term. www.bldg92.com

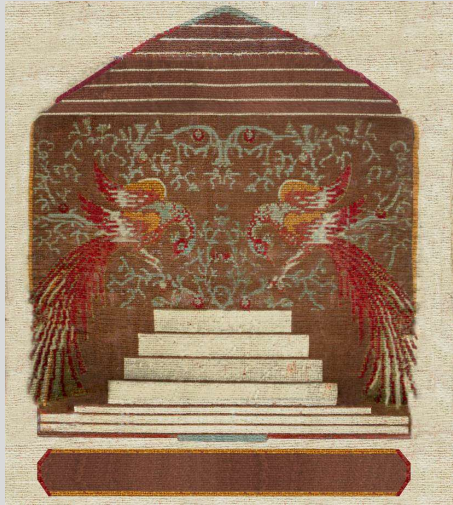
EMPIRE STORES MUSEUM,
Brooklyn, NY

**Waterfront at Brooklyn
Historical Society DUMBO**

Long-term. Organized by the Brooklyn
Historical Society. www.brooklynhistory.org

THOMAS COLE NATIONAL
HISTORIC SITE, Catskill, NY
Hudson River School Art Trail

Website. www.hudsonriverschool.org



Detail of the West Carpet reconstruction by Jean Dunbar from the exhibition ***A Guest in the Home*** at the Thomas Cole National Historic Site, Catskill, New York. Courtesy, Thomas Cole National Historic Site. Credit, Thomas Cole National Historic Site. www.thomascole.org

THOMAS COLE NATIONAL HISTORIC SITE, Catskill, NY
The Home and Studio of Thomas Cole, Founder of the Hudson River School of Art
 Long-term. www.thomascole.org

THOMAS COLE NATIONAL HISTORIC SITE, Catskill, NY
A Guest in the Home
 Long-term. www.thomascole.org

CENTER FOR NEW AMERICAN MEDIA, INC., New York, NY
Past/Present
 Website. www.pastpresent.org

CITY LORE, New York, NY
Poetic Voices of the Muslim World
 Website. www.pvmw.org

ELDRIDGE STREET SYNAGOGUE, New York, NY
Museum at Eldridge Street
 Site interpretation. Organized by the Eldridge Street Project. www.eldridgestreet.org

ELLIS ISLAND, New York, NY
Future in the Balance: Immigration, Public Health, and the Ellis Island Hospitals
 Long-term. Organized by Save Ellis Island, Inc. www.saveellisland.org

HENRY STREET SETTLEMENT, New York, NY
The House on Henry Street: Settlements, Public Health, and Social Reform
 Long-term. www.henrystreet.org

INTREPID SEA-AIR-SPACE MUSEUM, New York, NY
City at Sea: USS *Intrepid*
 Site interpretation. www.intrepidmuseum.org

LOWER EAST SIDE TENEMENT MUSEUM, New York, NY
Shop Life
 Long-term. www.tenement.org

LOWER EAST SIDE TENEMENT MUSEUM, New York, NY
97 Orchard Street Tenement Tours
 Long-term. www.tenement.org

LOWER EAST SIDE TENEMENT MUSEUM, New York, NY
103 Orchard Website
 Website. 103orchard.tenement.org/stories/103-orchard

LOWER EAST SIDE TENEMENT MUSEUM, New York, NY
103 Orchard Street, Under One Roof Tours
 Long-term. www.tenement.org

MOUNT VERNON HOTEL MUSEUM & GARDEN, New York, NY
The Abigail Adams Smith Museum as the Mount Vernon Hotel (1826-1833)
 Reinstallation. Organized by the Colonial Dames of America. www.mvhm.org

MUSEUM OF THE CITY OF NEW YORK, New York, NY
New York at Its Core
 Long-term. mcny.org

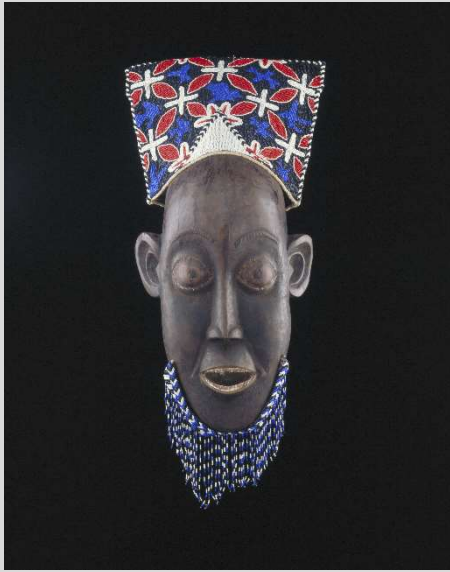
RUBIN MUSEUM OF ART, New York, NY
Explore Art: Life Through Himalayan Paintings
 Website. exploreart.rma2.org

WNET.ORG, New York, NY
Mission US: A Revolutionary Way to Learn History
 Website. www.mission-us.org

ROCHESTER MUSEUM AND SCIENCE CENTER, Rochester, NY
Expedition Earth
 Reinstallation. www.rmssc.org

PHILIPSBURG MANOR, Sleepy Hollow, NY
Philipsburg Manor
 Site interpretation. Organized by Historic Hudson Valley. www.hudsonvalley.org

ALICE AUSTEN HOUSE, Staten Island, NY
New Eyes on Alice Austen
 Site interpretation. aliceausten.org



Mbuombuo wood, beads, fiber mask and hat, geographical location, Bamum Africa Cameroon Yaounde, ©A112444c. From the exhibition *Africa* at the Field Museum, Chicago, Illinois. Courtesy, Field Museum. Credit, John Weinstein. www.fieldmuseum.org

LONG ISLAND MUSEUM OF AMERICAN ART, HISTORY, AND CARRIAGES, Stony Brook, NY
Going Places: How Horse-Drawn Vehicles Shaped American Life
 Long-term. www.longislandmuseum.org

LONG ISLAND MUSEUM OF AMERICAN ART, HISTORY, AND CARRIAGES, Stony Brook, NY
Driving for Sport and Pleasure
 Long-term. www.longislandmuseum.org

LONG ISLAND MUSEUM OF AMERICAN ART, HISTORY, AND CARRIAGES, Stony Brook, NY
Streets of New York
 Long-term. www.longislandmuseum.org

WTF, INC., Harrisburg, PA
ExplorePAHistory.com
 Website. www.explorepahistory.com

JOSEPH PRIESTLEY HOME, Northumberland, PA
Joseph Priestley: Reason, Order, and Plainness
 Site interpretation.
www.josephpriestleyhouse.org

PHILADELPHIA MUSEUM OF ART, Philadelphia, PA
European Collections
 Reinstallation. www.philamuseum.org

PHILADELPHIA OUTDOOR SCULPTURE SITES, Philadelphia, PA
Museum Without Walls
 Walking tour. Organized by the Association for Public Art. associationforpublicart.org

PLEASE TOUCH MUSEUM®, Philadelphia, PA
America to Zanzibar: Muslim Cultures Near and Far
 Closes September 2.
 Traveling. Organized by the Children's Museum of Manhattan. cmom.org

PLEASE TOUCH MUSEUM®, Philadelphia, PA
Centennial Exploration
 Long-term. www.pleasetouchmuseum.org

UNIVERSITY OF PENNSYLVANIA
 MUSEUM OF ARCHAEOLOGY AND ANTHROPOLOGY, Philadelphia, PA
Galleries of the Ancient Middle East
 Reinstallation. www.penn.museum

CARNEGIE MUSEUM OF NATURAL HISTORY, Pittsburgh, PA
Alcoa Foundation Hall of American Indians
 Long-term. www.carnegiemnh.org

CARNEGIE MUSEUM OF NATURAL HISTORY, Pittsburgh, PA
Walton Hall of Ancient Egypt
 Long-term. www.carnegiemnh.org

SENATOR JOHN HEINZ PITTSBURGH REGIONAL HISTORY CENTER, Pittsburgh, PA
Pittsburgh: A Tradition of Innovation
 Long-term. www.pghhistory.org

MUSEUM OF NEWPORT HISTORY, Newport, RI
Museum of Newport History at the Brick Market
 Long-term. Organized by the Newport Historical Society and the Museum of Newport History. www.newporthistorical.org

MUSEUM OF WORK AND CULTURE, Woonsocket, RI
La Survivance: French-Canadians in Woonsocket, Rhode Island
 Long-term. Organized by the Rhode Island Historical Society. www.rihs.org

ROKEBY MUSEUM, Ferrisburgh, VT
Underground Railroad in Vermont
 Long-term. www.rokeby.org

AMERICAN PRECISION MUSEUM, Windsor, VT
Shaping America
 Long-term. www.americanprecision.org

MIDWEST

CHICAGO HISTORY MUSEUM,
Chicago, IL

Modern by Design: Chicago Streamlines America

Closes December 2.

Temporary. Organized by the Chicago Historical Society. www.chicagohistory.org

FIELD MUSEUM, Chicago, IL

Africa

Long-term. www.fieldmuseum.org

FIELD MUSEUM, Chicago, IL

Peoples of the Pacific: Traveling the Pacific and Pacific Spirits

Long-term. www.fieldmuseum.org

HULL-HOUSE MUSEUM,
Chicago, IL

Redefining Democracy: Jane Addams and the Hull-House Settlement

Reinstallation. Organized by the University of Illinois at Chicago.

www.hullhousemuseum.org

NATIONAL MUSEUM OF MEXICAN ART, Chicago, IL

Nuestras Historias: Stories of Mexican Identity from the National Museum of Mexican Art's Permanent Collection

Reinstallation.

www.nationalmuseumofmexicanart.org

NEWBERRY LIBRARY, Chicago, IL

The Indians of the Midwest

Website. www.newberry.org

WINDOW TO THE WORLD COMMUNICATIONS, Chicago, IL

Studs Terkel Radio Archive

Website. studsterkel.wfmt.com

CAHOKIA MOUNDS MUSEUM SOCIETY, Collinsville, IL

Mark of the Mississippians

Website. www.archaeoexplorer.com/media

ILLINOIS STATE MUSEUM,
Springfield, IL

At Home in the Heartland

Long-term. www.museum.state.il.us

CONNER PRAIRIE, Fishers, IN

1863 Civil War Journey:

Raid on Indiana

Long-term. connerprairie.org

LEVI COFFIN STATE HISTORIC SITE,
Fountain City, IN

Souls Seeking Safety:

Interpreting the Underground Railroad Experience in Indiana

Long-term. Organized by the Indiana State Museum Foundation, Inc.
www.indianamuseum.org

CHILDREN'S MUSEUM OF INDIANAPOLIS, Indianapolis, IN

The Power of Children: Making a Difference

Long-term.

www.childrensmuseum.org/themuseum/powerofchildren/html/index.html

MISSISSIPPI RIVER MUSEUM AND AQUARIUM, Dubuque, IA

River Discovery

Long-term. Organized by the Dubuque County Historical Society.

www.mississippirivermuseum.com

THE HENRY FORD MUSEUM,
Dearborn, MI

Your Place in Time:

20th-Century America

Long-term. www.thehenryford.org

THE HENRY FORD MUSEUM,
Dearborn, MI

Made in America: The History of the American Industrial System

Long-term. www.thehenryford.org

THE HENRY FORD MUSEUM,
Dearborn, MI

Heroes of the Sky: Adventures in Early Flight

Long-term. www.thehenryford.org

DETROIT INSTITUTE OF ARTS,
Detroit, MI

Great Art: New Start

Reinstallation. www.dia.org

MICHIGAN STATE UNIVERSITY,
East Lansing, MI

Voices from Detroit: American Black Journal Online

Website. www.matrix.msu.edu/~abj

GRAND RAPIDS PUBLIC MUSEUM,
Grand Rapids, MI

Newcomers: The People of This Place

Long-term. www.grmuseum.org

GRAND RAPIDS PUBLIC MUSEUM,
Grand Rapids, MI

Anishinabek: The People of This Place

Long-term. www.grmuseum.org

INTERNATIONAL WOLF CENTER,
Ely, MN

Wolves and Humans: Coexistence, Competition, and Conflict

Long-term. Organized by the Science Museum of Minnesota. www.wolf.org

MILL CITY MUSEUM,
Minneapolis, MN

Mill City Museum

Long-term. Organized by the Minnesota Historical Society. www.millcitymuseum.org

MINNEAPOLIS INSTITUTE OF ART,
Minneapolis, MN

Material Journeys: African Art in Motion

Reinstallation. Organized by the Minneapolis Society of Fine Arts. www.artsmia.org

MILLE LACS INDIAN MUSEUM,
Onamia, MN

Learn About Our Past: The Story of the Mille Lacs Band of Ojibwe

Long-term. Organized by the Minnesota Historical Society. www.mnhs.org

LANDMARK CENTER, St. Paul, MN

Uncle Sam Worked Here

Long-term. Organized by the Minnesota Landmarks. www.landmarkcenter.org



Anne Maria Gray Valentine, unknown artist, c. 1865, oil on canvas, V.92.56. From the exhibition **Creating History: The Valentine Family and the Valentine Museum** at the Valentine Richmond History Center, Richmond, Virginia. Courtesy, Valentine Richmond History Center. thevalentine.org

MINNESOTA HISTORICAL SOCIETY,
St. Paul, MN
Play the Past: Humanities for the Next Generation
Mobile app. www.mnhs.org

MINNESOTA HISTORICAL SOCIETY,
St. Paul, MN
Open House
Long-term. www.mnhs.org

MINNESOTA HISTORY CENTER,
St. Paul, MN
Minnesota's Greatest Generation: The Depression, The War, The Boom
Long-term. Organized by the Minnesota Historical Society.
www.mnhs.org/people/mngg/index.htm

MINNESOTA PUBLIC RADIO,
St. Paul, MN
On Being
Website. www.onbeing.org

UNIVERSITY OF NEBRASKA, BOARD OF REGENTS, Lincoln, NE
The Journals of the Lewis and Clark Expedition Online Edition
Website. lewisandclarkjournals.unl.edu

CINCINNATI ART MUSEUM,
Cincinnati, OH
The Cincinnati Wing: The Story of Art in the Queen City
Long-term. www.cincinnatiartmuseum.org

DITTRICK MUSEUM OF MEDICAL HISTORY, CASE WESTERN RESERVE UNIVERSITY, Cleveland, OH
How Medicine Became Modern
Website. artsci.case.edu/Dittrick

KENT STATE UNIVERSITY,
Kent, OH
Making Meaning of May 4th: The Kent State Shootings in American History
Long-term. www.kent.edu

OHIO STATE UNIVERSITY,
Newark, OH
The Ancient Ohio Trail: A Media-Enhanced Cultural Heritage Experience
Website. www.ancientohiotrail.org

SOUTH DAKOTA STATE HISTORICAL SOCIETY, CULTURAL HERITAGE CENTER, Pierre, SD
Proving Up
Long-term.
history.sd.gov/museum/exhibits/gallery.aspx

CHIPPEWA VALLEY MUSEUM,
Eau Claire, WI
Farm Life: A Century of Change for Farm Families and Their Neighbors
Long-term. www.cvmuseum.com

CHIPPEWA VALLEY MUSEUM,
Eau Claire, WI
Changing Currents: Reinventing the Chippewa Valley
Long-term. www.cvmuseum.com

MILWAUKEE PUBLIC MUSEUM,
Milwaukee, WI
A Tribute to Survival
Long-term. www.mpm.edu

SOUTH

CARL ELLIOTT HOUSE MUSEUM,
Jasper, AL
Carl Elliott House
Long-term. Organized by Bevill State Community College.
www.bscc.edu/community-resources/carl-elliott-house-museum

FLORIDA MUSEUM OF NATURAL HISTORY, Gainesville, FL
South Florida: People and Environments
Long-term. Organized by the University of Florida. www.flmnh.ufl.edu

MISSION SAN LUIS, Tallahassee, FL
San Luis de Apalachee: Interpretation of a 17th-Century Spanish Mission
Long-term. Organized by the Florida Division of Historical Resources.
www.missionsanluis.org

ATLANTA HISTORY CENTER,
Atlanta, GA
Turning Point: The American Civil War
Long-term. www.atlhist.org

SOCIETY OF BIBLICAL LITERATURE,
Decatur, GA
Bible Odyssey: Exploring People, Places, and Passages
Website. www.bibleodyssey.com

300-MILE DRIVING TRAIL,
Indianola, MS
**Mississippi Blues Commission
Blues Trail**

Site interpretation. Organized by the
Mississippi Blues Commission.
www.msbluestrail.org

SMITH ROBERTSON MUSEUM &
CULTURAL CENTER, Jackson, MS
**Field to Factory: Afro-American
Migration, 1915-1940**

Long-term.
www.jacksonms.gov/index.aspx?nid=143

LAUREN ROGERS MUSEUM OF ART,
Laurel, MS

**By Native Hands: Woven
Treasures from the Lauren
Rogers Museum of Art**

Reinstallation. www.lirma.org

LEVINE MUSEUM OF THE NEW
SOUTH, Charlotte, NC

**Cotton Fields to Skyscrapers:
Charlotte and the Carolina
Piedmont in the New South**

Long-term. www.museumofthenewsouth.org

MUSEUM OF THE CHEROKEE
INDIAN, Cherokee, NC
**Emissaries of Peace: The 1762
Cherokee/British Delegations**

Long-term. www.cherokeemuseum.org

OLD SALEM, Winston-Salem, NC
**The Moravian Way of Health
and Healing**

Long-term. www.oldsalem.org

HERMITAGE, Hermitage, TN
**The Hermitage, Andrew Jackson,
and a Changing America**

Site interpretation. www.thehermitage.com

EAST TENNESSEE HISTORICAL
SOCIETY, Knoxville, TN
**Voices of the Land: The People
of East Tennessee**

Long-term. www.easttnhistory.org

NATIONAL CIVIL RIGHTS MUSEUM,
Memphis, TN

Lorraine Motel Exhibits

Long-term. www.civilrightsmuseum.org

MONTICELLO, Charlottesville, VA
**Mulberry Row and the
Landscape of Slavery at
Jefferson's Monticello**

Site interpretation. Organized by the Thomas
Jefferson Memorial Foundation.
www.monticello.org

MONTICELLO, Charlottesville, VA
**Domestic Life and the
Plantation Community at
Jefferson's Monticello**

Site interpretation. Organized by the Thomas
Jefferson Memorial Foundation.
www.monticello.org

MONTICELLO VISITOR CENTER,
Charlottesville, VA

To Try All Things

Long-term. Organized by the Thomas Jefferson
Memorial Foundation. www.monticello.org

UNIVERSITY OF VIRGINIA,
Charlottesville, VA
**Slavery and the African
American Experience in Virginia,
1619-1861: A Project of
Encyclopedia Virginia**

Website. www.encyclopediavirginia.org/vr

GEORGE MASON UNIVERSITY,
Fairfax, VA
**Hidden Histories on America's
Front Lawn**

Website. mobile.mallhistory.us

GEORGE MASON UNIVERSITY,
Fairfax, VA
Gulag: Many Days, Many Lives

Website. gulaghistory.org

R. R. MOTON HIGH SCHOOL,
Farmville, VA

**The Moton School Story:
Children of Courage**

Long-term. Organized by the Robert R. Moton
Museum. www.motonmuseum.org

MAYMONT, Richmond, VA
**In Service and Beyond:
Domestic Work and Life in
a Gilded Age Mansion**

Long-term. www.maymont.org

VALENTINE RICHMOND HISTORY
CENTER, Richmond, VA

**Creating History:
The Valentine Family and
the Valentine Museum**

Long-term. thevalentine.org

VIRGINIA HISTORICAL SOCIETY,
Richmond, VA

**An American Turning Point:
The Civil War in Virginia**

Website. Organized by the Virginia
Sesquicentennial of the American Civil War
Commission. [www.vahistorical.org/civilwar/
introduction.htm](http://www.vahistorical.org/civilwar/introduction.htm)

COLONIAL WILLIAMSBURG,
Williamsburg, VA

**From Subjects to Citizens:
Williamsburg and
the American Revolution**

Website. www.ouramericanrevolution.org

SOUTHWEST

BISBEE MINING & HISTORICAL
MUSEUM, Bisbee, AZ

**Bisbee: Urban Outpost on
the Frontier**

Long-term. www.bisbeemuseum.org

FORT APACHE HISTORIC PARK,
Fort Apache, AZ

**Transitions in the Apache World:
The Fort Apache Legacy**

Long-term. Organized by the White Mountain
Apache Tribe.
www.wmat.nsn.us/fortapachepark.htm

DESERT BOTANICAL GARDEN,
Phoenix, AZ

**Plants and People of
the Sonoran Desert**

Long-term. www.dbg.org

HEARD MUSEUM, Phoenix, AZ
**Away from Home: American
Indian Boarding School Stories**

Long-term. heard.org

ARIZONA STATE UNIVERSITY,
Tempe, AZ
**Nature, Culture, and History at
the Grand Canyon**
Website. grandcanyonhistory.clas.asu.edu

ARIZONA STATE MUSEUM,
Tucson, AZ
**Paths of Life: American Indians
of the Southwest**
Long-term. Organized by the University of
Arizona. www.statemuseum.arizona.edu

MAXWELL MUSEUM OF
ANTHROPOLOGY,
Albuquerque, NM
Ancestors
Long-term. www.unm.edu/~maxwell

MAXWELL MUSEUM OF
ANTHROPOLOGY,
Albuquerque, NM
People of the Southwest
Long-term. www.unm.edu/~maxwell

IAIA MUSEUM OF CONTEMPORARY
NATIVE ARTS, Santa Fe, NM
**Art for a New Understanding:
Native Voices, 1950s to Now**
Closes July 19.
Traveling. Organized by the Crystal Bridges
Museum of American Art. crystalbridges.org

EL CAMINO REAL INTERNATIONAL
HERITAGE CENTER, Socorro, NM
**Traveling el Camino Real:
Caminando el Camino Real**
Long-term. Organized by the Museum of New
Mexico. www.nmmonuments.org

A:SHIWI A:WAN MUSEUM AND
HERITAGE CENTER, Zuni, NM
Hawikku: Echoes from Our Past
Long-term. ashiwi-museum.org

OKLAHOMA HISTORY CENTER,
Oklahoma City, OK
We Are Who We Were
Long-term. www.okhistory.org

BOB BULLOCK TEXAS STATE
HISTORY MUSEUM, Austin, TX
**La Belle: The Ship That
Changed History**
Long-term. www.thestoryoftexas.com

Visitors at the site interpretation
**Mount Auburn Cemetery: A New
American Landscape** at Mount
Auburn Cemetery, Cambridge,
Massachusetts. Courtesy, Friends
of Mount Auburn.
www.mountauburn.org



BOB BULLOCK TEXAS STATE
HISTORY MUSEUM, Austin, TX
WW1 America
Closes August 11.
Traveling. Organized by the Minnesota
Historical Society. www.mnhs.org

UNIVERSITY OF ALASKA MUSEUM,
Fairbanks, AK
**Rose Berry Alaskan Art Gallery
Reinstallation.** www.uaf.edu/museum

WEST

PRATT MUSEUM, Homer, AK
**Kachemak Bay, Alaska: An
Exploration of People and Place**
Reinstallation. www.prattmuseum.org

FORT ROSS STATE HISTORIC PARK,
Jenner, CA
Rotchev House Museum
Long-term. Organized by the Fort Ross
Interpretive Association.
www.fortrossinterpretive.org

FOWLER MUSEUM OF CULTURAL
HISTORY, UNIVERSITY OF
CALIFORNIA, LOS ANGELES,
Los Angeles, CA
**Intersections: World Arts,
Local Lives**
Reinstallation. www.fowler.ucla.edu

UNIVERSITY OF SOUTHERN
CALIFORNIA, Los Angeles, CA
Walden, A Game
Digital game. www.waldengame.com

OAKLAND MUSEUM OF
CALIFORNIA, Oakland, CA
**Coming to California: The
Gallery of California History**
Long-term. www.museumca.org

PERALTA HACIENDA HISTORICAL
PARK, Oakland, CA
**Becoming California,
Becoming America**
Site interpretation. Organized by the Friends
of Peralta Hacienda Historical Park.
www.peraltahacienda.org

MUSEUM OF HISTORY AND ART,
ONTARIO, Ontario, CA
Road Ways
Long-term. Organized by the Museum of
History and Art. www.ontarioca.gov/museum

ASIAN ART MUSEUM OF SAN
FRANCISCO, San Francisco, CA
Permanent Collections Galleries
Long-term. www.asianart.org

CHINESE HISTORICAL SOCIETY OF
AMERICA, San Francisco, CA
**Chinese American:
Exclusion/Inclusion**
Long-term. Organized by the New-York
Historical Society. chsa.org

COIT TOWER, RINCON ANNEX,
CITY COLLEGE, MARINE MARITIME
MUSEUM, San Francisco, CA
**New Deal Murals of
San Francisco**
Walking tour. Organized by KQED, Inc.
www.kqed.org

MOLLY BROWN HOUSE MUSEUM,
Denver, CO
**Molly Brown: The Biography of
a Changing Nation**
Long-term. www.mollybrown.org

KONA COFFEE FARM,
Captain Cook, HI
**Kona Coffee Living
History Farm: A Glimpse
into the Lifestyle of Kona's
Coffee Pioneers**
Site interpretation. Organized by the Kona
Historical Society. www.konahistorical.org

KONA HISTORIC RANCH,
Kealahou, HI
**H. N. Greenwell Store Museum:
Experience 19th-Century Life in
the Hawaiian Kingdom**
Site interpretation. Organized by the Kona
Historical Society. www.konahistorical.org

IDAHO STATE MUSEUM,
Boise, ID
Idaho: The Land and Its People
Long-term. history.idaho.gov/museum

C. M. RUSSELL MUSEUM,
Great Falls, MT
**The Bison: American Icon, Heart
of Plains Indian Culture**
Long-term. Organized by the Trigg C. M.
Russell Foundation. cmrussell.org

HIGH DESERT MUSEUM, Bend, OR
**By Hand Through Memory:
Native People of the
Columbia River Plateau
in the Twentieth Century**
Long-term. www.highdesertmuseum.org

UTAH MUSEUM OF NATURAL
HISTORY, Salt Lake City, UT
**Native Voices: People of
the Great Basin and
Colorado Plateau**
Long-term. umnh.utah.edu/home

BURKE MUSEUM OF NATURAL
HISTORY AND CULTURE,
UNIVERSITY OF WASHINGTON,
Seattle, WA
Pacific Voices
Long-term.
www.washington.edu/burkemuseum

PLAINS INDIAN MUSEUM,
Cody, WY
**Plains Indian Museum
Reinstallation.** Organized by the Buffalo Bill
Center of the West. centerofthewest.org

All events, exhibitions, and programs listed are supported by grants from the National Endowment for the Humanities, Division of Public Programs, 400 7th Street, SW, Washington, DC 20506, (202) 606-8269, PublicPgms@neh.gov. Please contact the host institution for exact dates and times. For more information about NEH and its programs, we invite you to visit our website at www.neh.gov

NATIONAL ENDOWMENT
FOR THE HUMANITIES
WASHINGTON, D.C. 20506
OFFICIAL BUSINESS
PENALTY FOR PRIVATE USE,
\$300

